

# Statistik

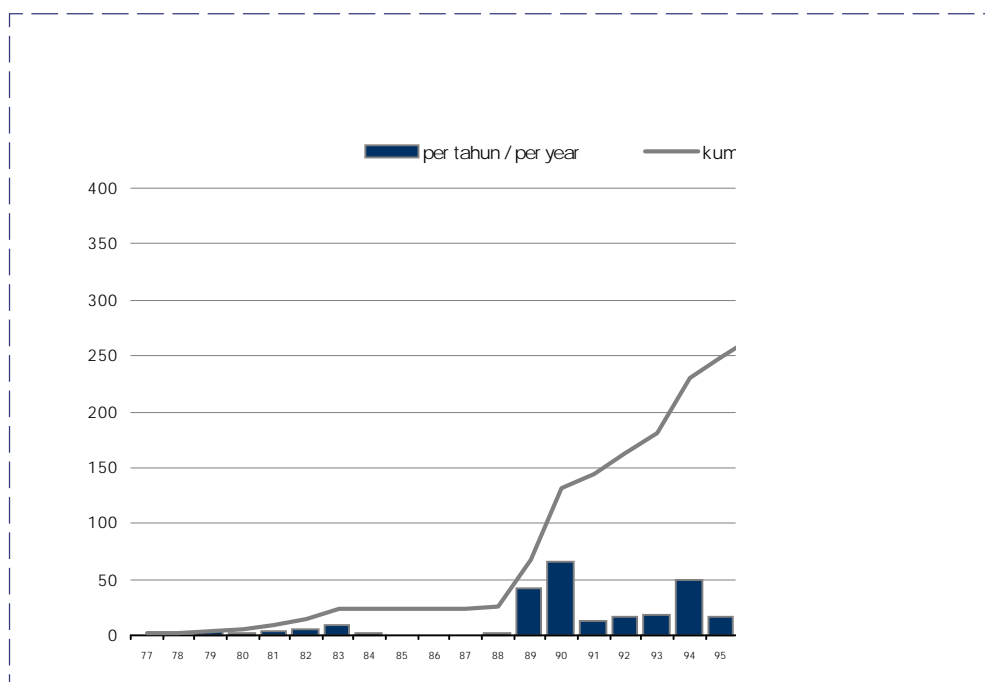
## Statistics

**Emisi Saham**  
Initial Public Offerings  
1977 - 2001

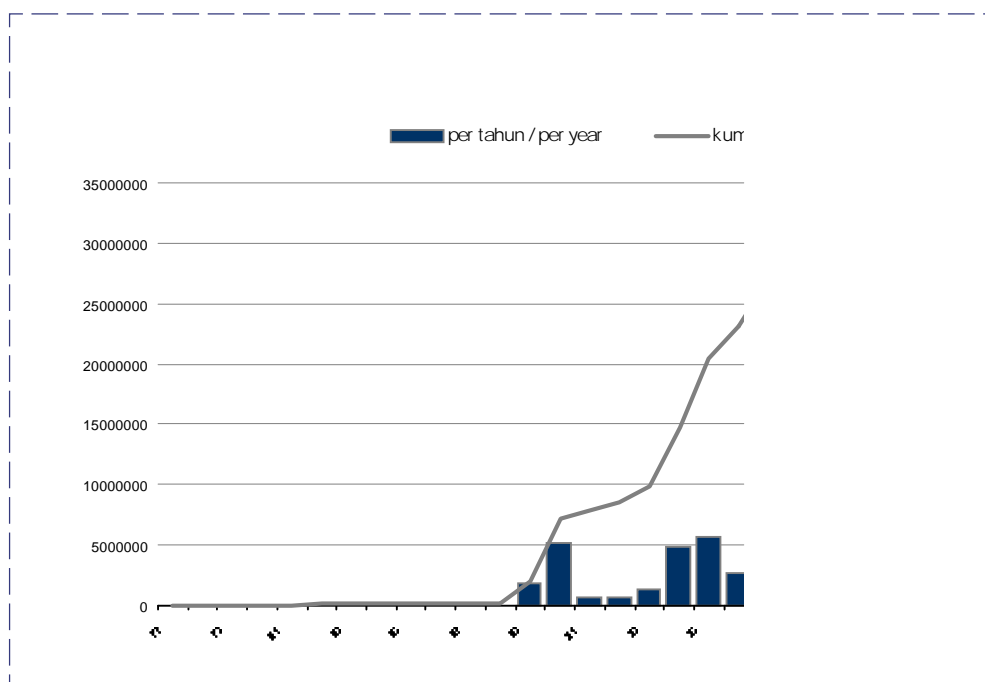
Tahun Year	Emiten Issuer		Nilai ( Rp juta ) Value ( Rp million )	
	Per tahun Per year	Kumulatif Cumulative	Per tahun Per year	Kumulatif Cumulative
1977	1	1	1.787,5	1.787,5
1978	0	1	0,0	1.787,5
1979	3	4	25.113,0	26.900,5
1980	2	6	8.527,5	35.428,0
1981	3	9	37.928,4	73.356,4
1982	5	14	16.661,7	90.018,1
1983	9	23	20.906,3	110.924,3
1984	1	24	320,5	111.244,8
1985	0	24	0,0	111.244,8
1986	0	24	0,0	111.244,8
1987	0	24	0,0	111.244,8
1988	1	25	20.456,7	131.701,5
1989	42	67	1.865.777,5	1.997.479,0
1990	65	132	5.221.651,6	7.219.130,6
1991	13	145	626.169,6	7.845.300,2
1992	17	162	743.665,0	8.588.965,2
1993	19	181	1.362.431,3	9.951.396,5
1994	50	231	4.804.494,0	14.755.890,5
1995	17	248	5.682.059,4	20.437.949,8
1996	19	267	2.662.207,3	23.100.157,1
1997	34	301	3.950.515,5	27.050.672,6
1998	3	304	68.125,0	27.118.797,6
1999	12	316	805.247,0	27.924.044,6
2000	25	341	1.772.196,1	29.696.240,7
2001	32	373	1.096.763,1	30.793.003,8
<b>TOTAL</b>		<b>373</b>		<b>30.793.003,8</b>

\*) tidak termasuk 6 perusahaan publik  
excluded 6 securities companies

**Jumlah Emiten Saham**  
**Number of Stock Issuers**  
**1977-2001**



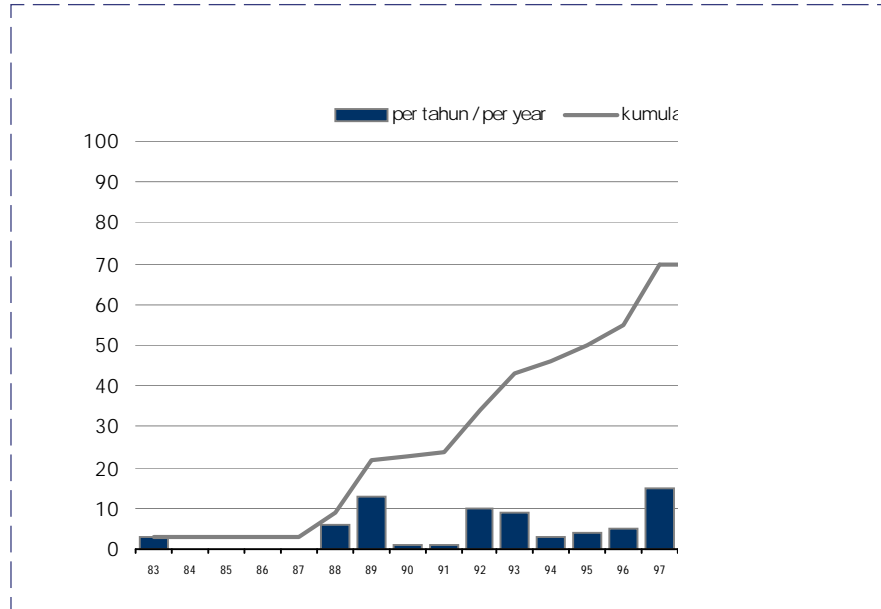
**Nilai Emisi Saham (Rp juta)**  
**Value of Stock Issuance (Rp million)**  
**1977-2001**



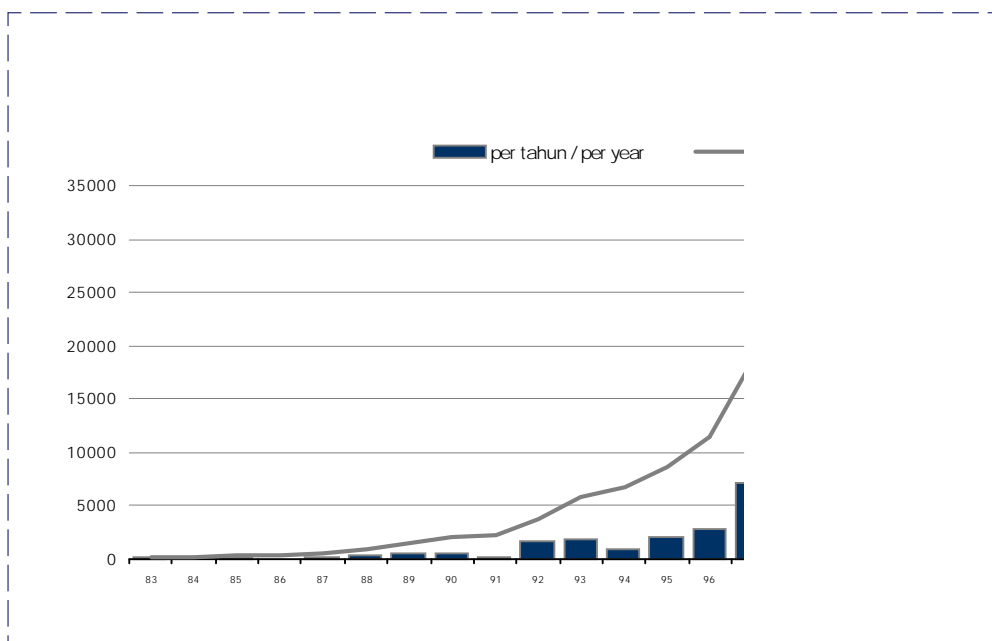
**Emisi Obligasi  
Bond Issuance  
1983 - 2001**

Tahun Year	Obligasi Efektif Bond Effective Per tahun Per year	Emiten Issuer		Nilai ( Rp juta ) Value ( Rp million )	
		Per tahun Per year	Kumulatif Cumulative	Per tahun Per year	Kumulatif Cumulative
1983	7	3	3	154.718,0	154.718,0
1984	2	0	3	70.000,0	224.718,0
1985	3	0	3	130.000,0	354.718,0
1986	1	0	3	50.000,0	404.718,0
1987	3	0	3	131.000,0	535.718,0
1988	11	6	9	400.000,0	935.718,0
1989	24	13	22	619.500,0	1.555.218,0
1990	7	1	23	535.000,0	2.090.218,0
1991	3	1	24	125.000,0	2.215.218,0
1992	21	10	34	1.641.533,0	3.856.751,0
1993	16	9	43	1.905.000,0	5.761.751,0
1994	7	3	46	929.520,0	6.691.271,0
1995	9	4	50	2.003.130,0	8.694.401,0
1996	13	5	55	2.841.080,0	11.535.481,0
1997	24	15	70	7.204.992,0	18.740.473,0
1998	1	0	70	150.000,0	18.890.473,0
1999	9	6	76	4.283.960,0	23.174.433,0
2000	19	15	91	5.613.000,0	28.787.433,0
2001	6	3	94	2.875.000,0	31.662.433,0
<b>Total</b>			<b>94</b>		<b>31.662.433,0</b>

**Jumlah Emiten Obligasi**  
**Number of Bonds Issued**  
**1983-2001**



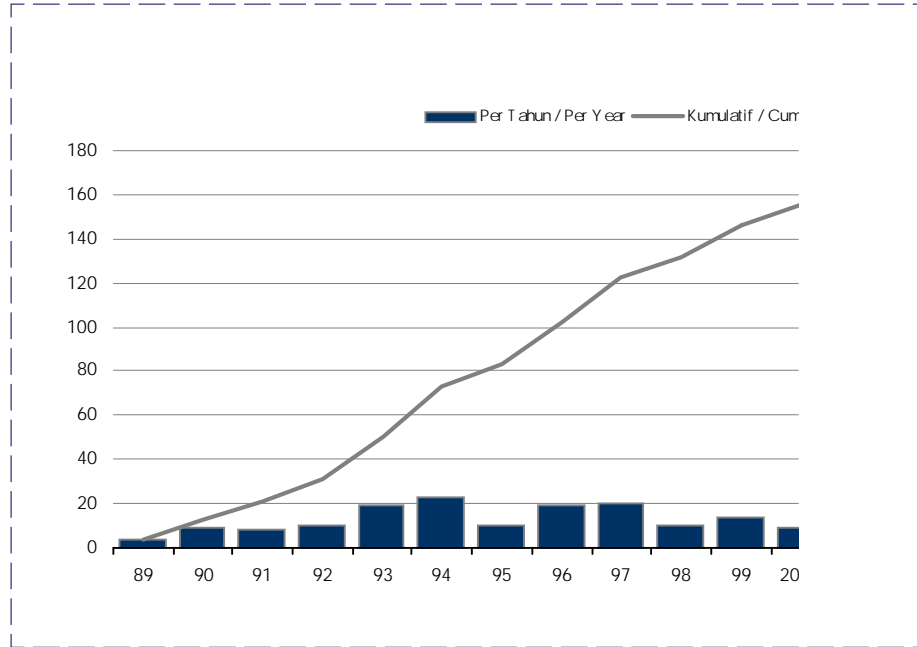
**Nilai Emisi Obligasi (Rp juta)**  
**Value of Bonds Issued (Rp million)**  
**1983-2001**



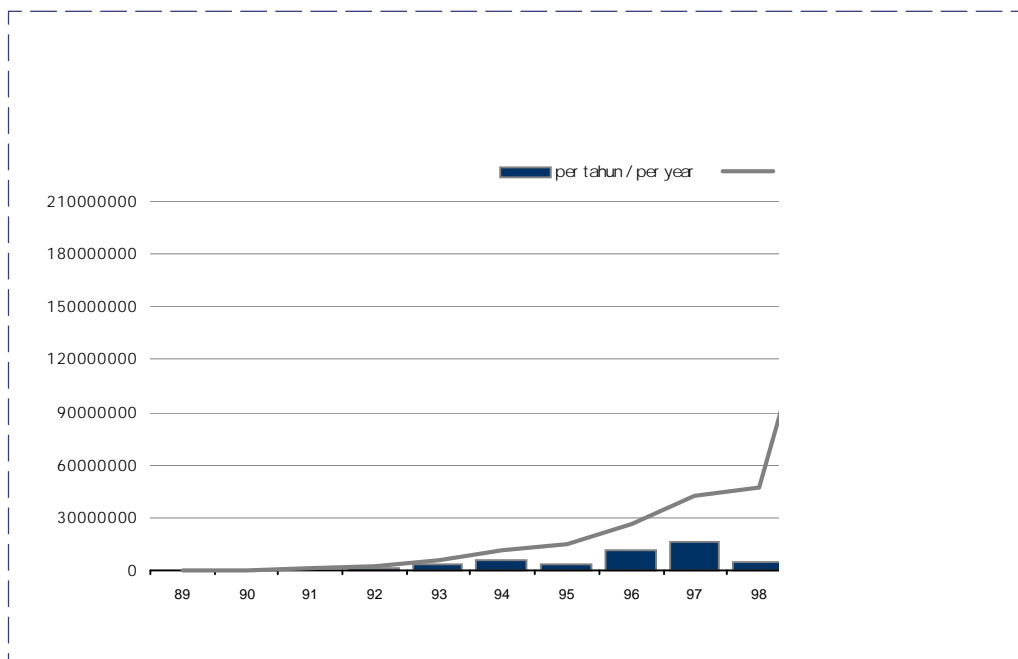
**Penerbitan HMETD**  
Rights Issuance  
1989 - 2001

Tahun Year	HMETD Efektif Effective's Rights		Emiten Issuer	Nilai (Rp juta) Value (Rp million)	
	Per tahun Per year	Per tahun Per year	Kumulatif Cumulative	Per tahun Per year	Kumulatif Cumulative
1989	4	4	4	45.096,2	45,096.2
1990	12	9	13	527.248,9	572,345.1
1991	8	8	21	340.473,1	912,818.2
1992	13	10	31	1.361.236,4	2,274,054.6
1993	22	19	50	3.356.723,3	5,630,778.0
1994	30	23	73	5.661.450,5	11,292,228.5
1995	17	10	83	3.182.000,7	14,474,229.1
1996	38	19	102	11.924.194,7	26.398.423,9
1997	36	20	122	15.887.075,1	42.285.499,0
1998	18	10	132	4.890.935,7	47.176.434,7
1999	30	14	146	129.934.491,3	177.110.926,0
2000	18	9	155	17.547.875,0	194.658.801,0
2001	13	7	162	4.187.967,7	198.846.768,6
<b>Total</b>			<b>162</b>		<b>198.846.768,6</b>

**Jumlah Penawaran Umum Terbatas**  
**Number of Rights Issuance**  
**1989-2001**



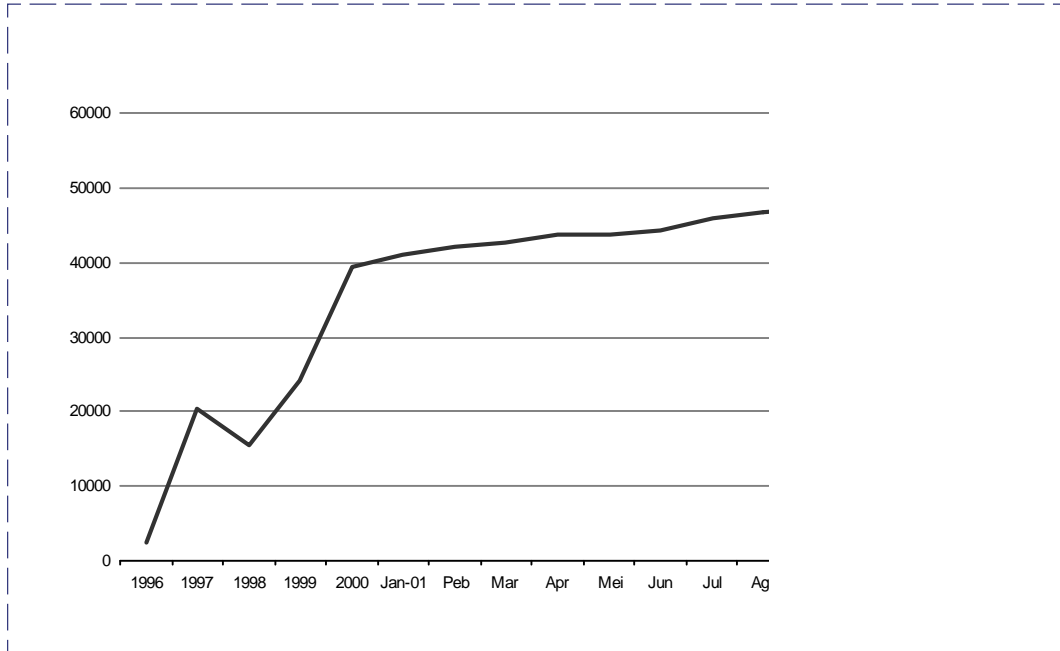
**Nilai Penerbitan HMETD (Rp juta)**  
**Value of Rights Issued (Rp million)**  
**1989-2001**



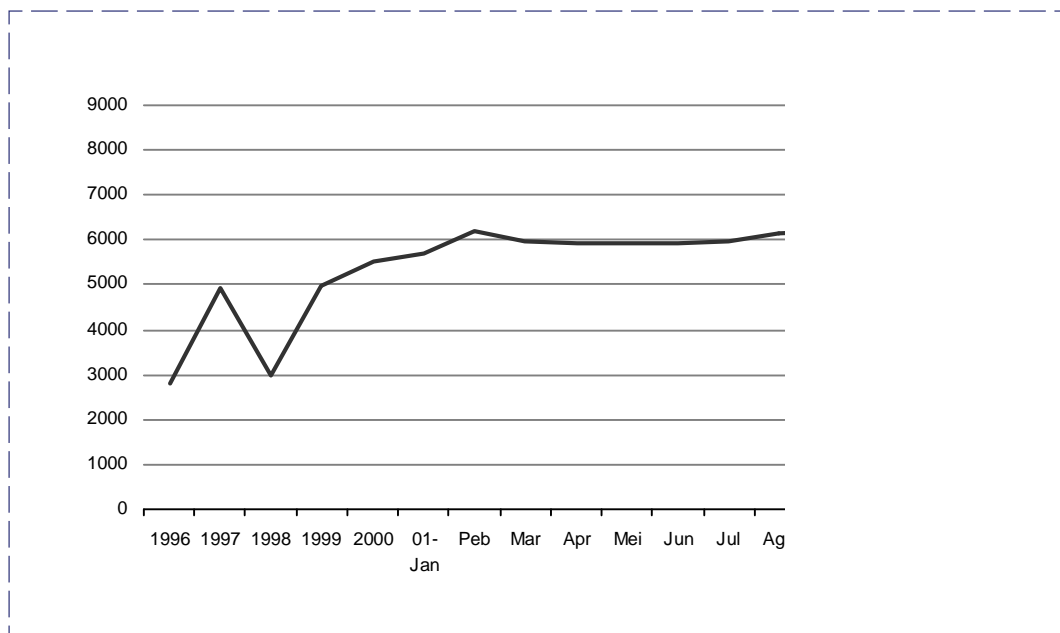
**Reksa Dana**  
Investment Funds  
1996 - 2001

Periode Period	Jumlah Number	Pemegang Saham/Unit Penyertaan Unit Holders	NAB (Rp juta) NAV (Rp million)	Jml Saham/ Unit yang Beredar Number of Outstanding
1996	25	2.441	2.782.322,5	2.942.232.210,518
1997	77	20.234	4.916.604,8	6.007.373.758,547
1998	81	15.482	2.992.171,4	3.680.892.097,256
1999	81	24.127	4.974.105,0	4.349.952.950,816
2000	94	39.487	5.515.954,1	5006.049.769,659
2001				
Jan	96	40.986	5.688.549,0	5.100.693.639,907
Peb	97	42.105	6.194.866,2	5.497.922.441,815
Mar	96	42.518	5.975.983,7	5.397.144.667,749
Apr	96	43.800	5.913.882,7	5.343.484.084,042
Mei	97	43.757	5.920.947,6	5.280.362.288,714
Jun	96	44.179	5.922.501,2	5.238.114.257,552
Jul	96	45.756	5.970.921,4	5.281.641.427,357
Agust	103	46.592	6.135.154,6	5.430.997.676,636
Sept	103	47.335	6.208.595,2	5.484.903.326,754
Okt	103	47.565	6.380.460,4	5.568.815.237,334
Nov	103	49.635	6.818.345,6	5.970.463.393,917
Des	108	51.723	8.000.000,0	7.303.771.880,360

**Pemegang Unit Penyertaan**  
**Unit Holders**  
**1996-2001**



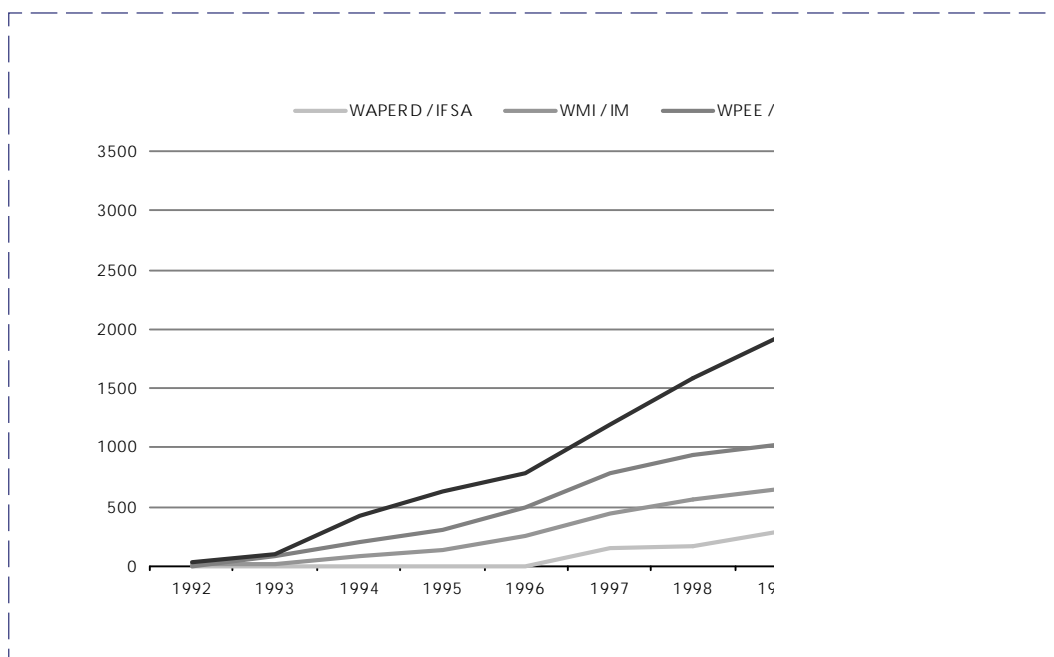
**Nilai Kekayaan Bersih (Rp juta)**  
**Net Asset Value (Rp million)**  
**1996-2001**



**Izin Wakil Perusahaan Efek**  
Securities Company Representative Licenses  
1992-2001

Tahun Year	Wakil Perantara Pedagang Efek Broker-Dealer	Wakil Penjamin Emisi Efek Underwriters	Wakil Manajer Investasi Investment Manager	Wakil Agen Penjual Efek Reksa Dana Investment Funds Selling Agents
1992	34	5	18	-
1993	64	78	6	-
1994	331	127	55	-
1995	202	95	54	-
1996	161	184	116	-
1997	396	292	200	158
1998	407	156	122	19
1999	334	92	80	120
2000	631	136	114	276
2001	637	124	205	559
<b>Total</b>	<b>3.197</b>	<b>1.289</b>	<b>970</b>	<b>1.132</b>

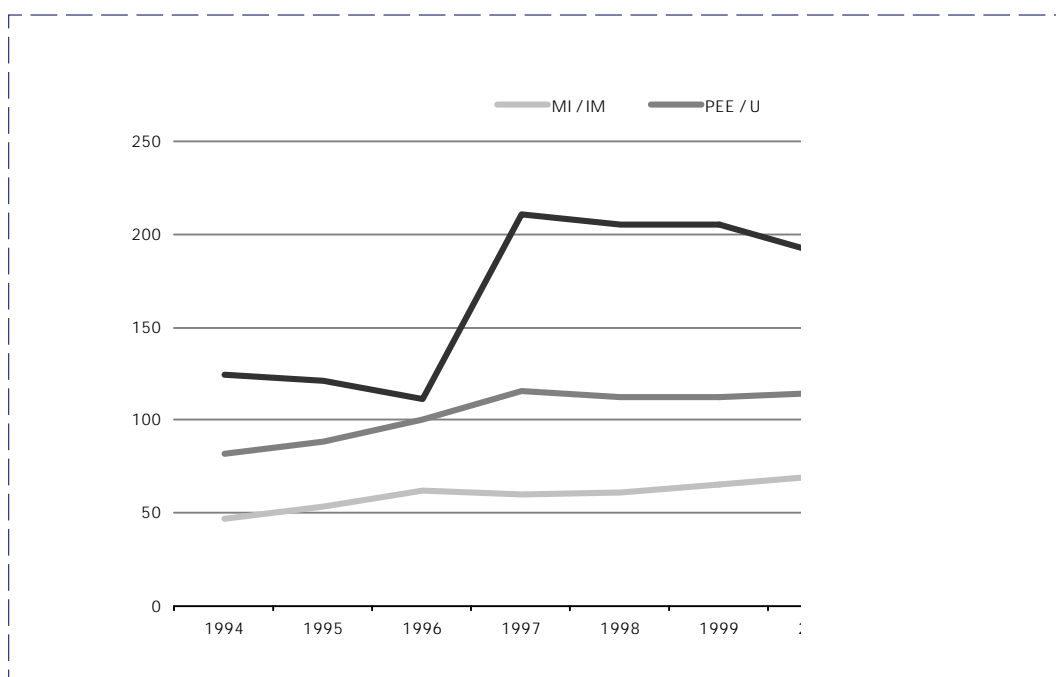
**Izin Wakil Perusahaan Efek**  
Securities Company Representative Licences  
1992-2001



**Izin Usaha Perusahaan Efek**  
**Securities Company Licences**  
**1994-2001**

Tahun Year	Perantara Pedagang Efek (PPE) Broker - Dealer	Penjamin Emisi Efek (PEE) Underwriters	Manajer Investasi (MI) Investment Manager
1994	124	82	47
1995	121	88	54
1996	111	100	62
1997	211	116	60
1998	205	112	61
1999	205	112	66
2000	190	115	70
2001	189	116	79

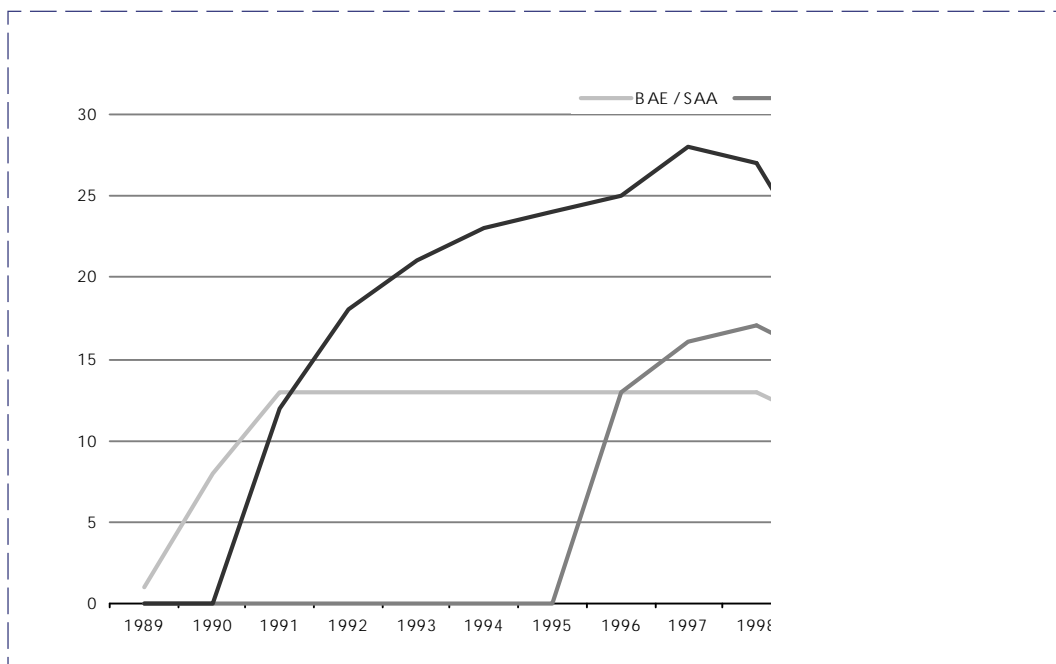
**Izin Perusahaan Efek**  
**Securities Company Licences**  
**1994 - 2001**



**Lembaga Penunjang Pasar Modal**  
Capital Market Supporting Institutions  
1989 - 2001

Tahun Year	Biro Administrasi Efek (BAE) Securities Administration Agencies	Wali Amanat (WA) Trust Agents	Bank Kustodian (BK) Custodian Banks
1989	1	-	-
1990	8	-	-
1991	13	-	12
1992	13	-	18
1993	13	-	21
1994	13	-	23
1995	13	-	24
1996	13	13	25
1997	13	16	28
1998	13	17	27
1999	11	15	20
2000	13	15	20
2001	13	14	20

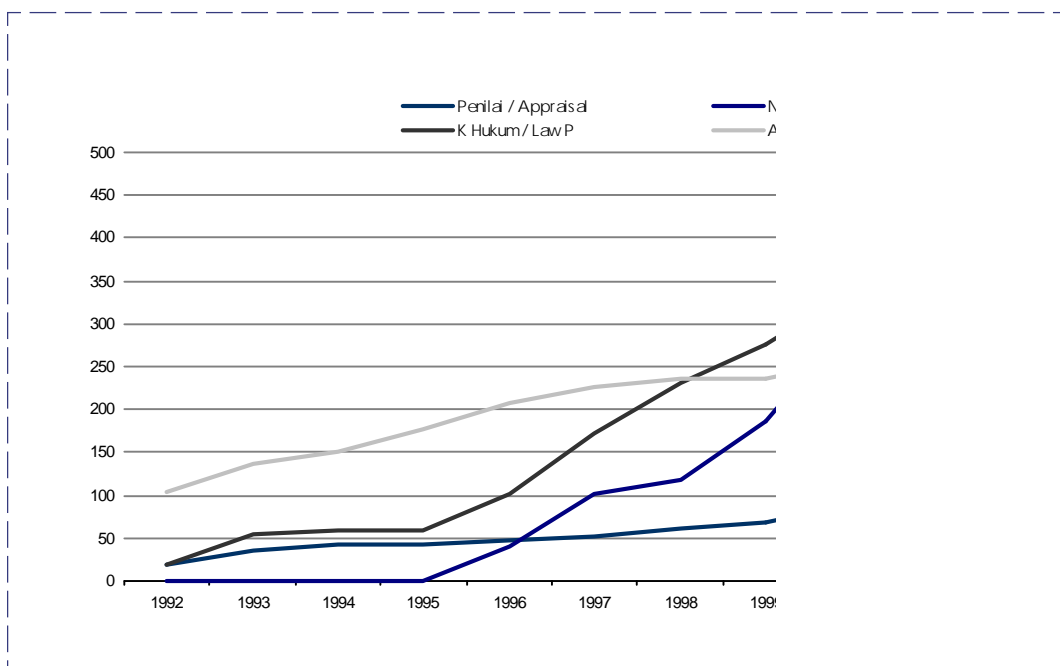
**Lembaga Penunjang Pasar Modal**  
Capital Market Supporting Institutions  
1989 - 2001



**Profesi Penunjang Pasar Modal**  
**Capital Market Supporting Professionals**  
**1992-2001**

Tahun Year	Akuntan Accounting Partners		Notaris Civil Law Notaries		Konsultan Hukum Law Partners		Penilai Appraisal	
	Σ	+	Σ	+	Σ	+	Σ	+
1992	103	-	-	-	19	-	20	-
1993	136	33	-	-	54	35	36	16
1994	152	16	-	-	58	4	42	6
1995	178	26	-	-	58	-	42	-
1996	208	30	41	-	102	44	47	5
1997	226	18	102	61	173	71	53	6
1998	236	10	119	17	232	59	61	8
1999	236	16	187	68	275	43	69	8
2000	256	20	303	116	338	63	89	20
2001	274	18	440	137	408	70	96	7

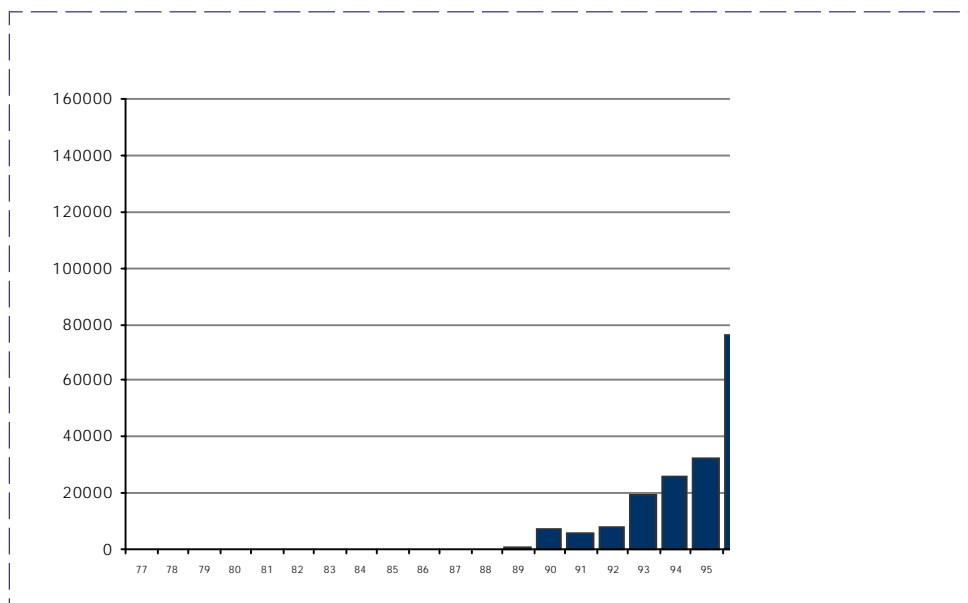
**Profesi Penunjang Pasar Modal**  
**Capital Market Supporting Professionals**  
**1992-2001**



**Perdagangan Saham BEJ**  
**JSX Share Trading**  
**1977 -2001**

Periode Period	Total Volume (Saham) Total of Volume (Shares)	Total Nilai (Rp miliar) Total of Value (Rp billion)	Hari Bursa Trading Days	Rata-rata Perdagangan Trading Avarage	
				Volume (Saham) Volume (Share)	Nilai (Rp juta) Value (Rp million)
1977	14.577	0,153	98	149	6
1978	19.541	0,218	250	78	0,9
1979	119.310	1,333	249	479	5,4
1980	1.656.290	5,733	252	6.573	22,8
1981	2.889.547	7,650	254	11.376	30,1
1982	5.014.806	12,624	249	20.140	50,7
1983	3.507.748	10,104	250	14.031	40,4
1984	1.218.833	2,139	246	4.955	8,7
1985	1.886.601	3,206	244	7.732	13,1
1986	1.431.921	1,815	248	5.774	7,3
1987	2.523.374	5,184	246	10.258	21,1
1988	6.944.592	30,591	251	27.668	121,9
1989	95.791.539	964,272	247	387.820	3.903,9
1990	702.587.441	7.311,288	243	2.891.306	30.087,6
1991	1.007.920.460	5.778,248	245	4.113.961	23.584,7
1992	1.706.269.484	7.953,299	247	6.907.974	32.199,6
1993	3.844.031.699	19.086,237	246	15.626.145	77.586,3
1994	5.292.580.825	25.482,803	245	21.602.371	104.011,4
1995	10.646.444.247	32.357,503	246	43.278.229	131.534,6
1996	29.527.727.838	75.729,894	249	118.585.252	304.136,1
1997	76.599.170.013	120.385,166	246	311.378.740	489.370,6
1998	90.620.529.970	99.684,703	247	366.884.737	403.581,8
1999	178.486.582.779	147.880,986	247	722.617.744	598.704,4
2000	134.531.333.895	122.774,800	239	562.892.610	513.702,0
2001	148.381.308.944	92.522,82	246	603.176.053	396.434,2

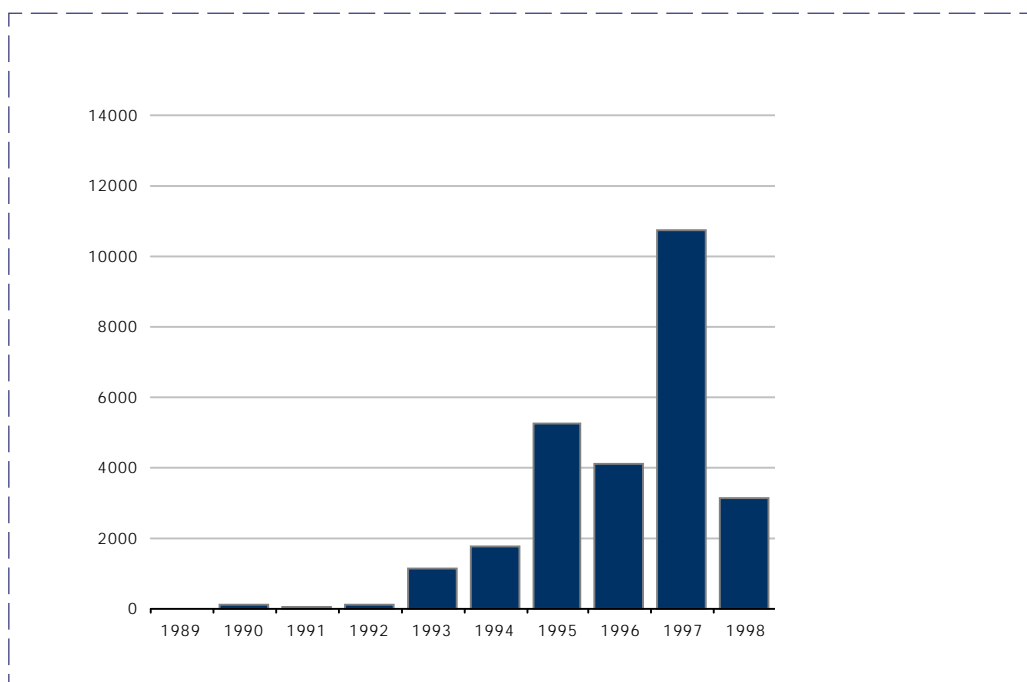
**Perdagangan Saham BEJ (Rp miliar)**  
**JSX Share Trading (Rp Billion)**  
**1977 -2001**



**Perdagangan Saham BES**  
**SSX Shares Trading**  
**1989 - 2001**

Periode Period	Total Volume (Saham) Total of Volume (Shares)	Total Nilai (Rp miliar) Total of Value (Rp Billion)	Hari Bursa Trading Days	Rata-rata Perdagangan Trading Average	
				Volume (Saham) Volume (Share)	Nilai (Rp miliar) Value (Rp Billion)
1989	2.470.320	25,32	135	18.299	0,188
1990	14.527.345	141,18	243	59.783	0,581
1991	8.825.066	40,61	245	36.021	0,166
1992	38.738.061	136,50	247	156.834	0,553
1993	266.861.441	1.148,62	246	1.084.803	4,669
1994	494.551.495	1.778,21	245	2.018.578	7,258
1995	1.715.120.586	5.253,86	246	6.972.035	21,357
1996	1.547.836.660	4.100,20	249	6.216.211	16,467
1997	4.902.191.964	10.749,95	246	19.927.610	43,699
1998	2.228.506.878	3.116,88	247	9.022.295	12,619
1999	7.029.265.240	13.199,0	247	28.458.564	53,4
2000	6.567.951.376	9.984,9	241	27.252.910	41,4
2001	8.718.579.679	2.720,3	246	35.441.381	11.058,1

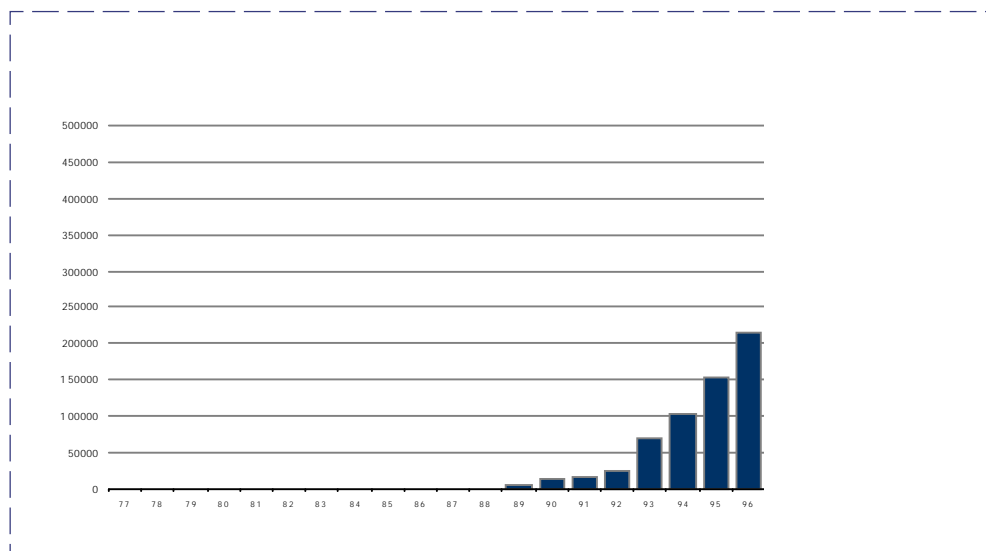
**Perdagangan Saham BES (Rp miliar)**  
**SSX Shares Trading (Rp Billion)**  
**1989 - 2001**



**Nilai Kapitalisasi Pasar Bursa Efek Jakarta**  
**JSX Market Capitalization**  
**1977 - 2001**

Akhir Periode Last Period	Jumlah (Saham) Amount (Shares)	Nilai/ (Rp miliar) Value ( Rp Billion)
1977	260.260	2,7
1978	330.260	4,1
1979	7.058.116	23,9
1980	14.588.116	41,0
1981	19.788.128	48,6
1982	39.948.208	99,3
1983	48.005.208	102,7
1984	57.498.184	91,1
1985	57.827.872	89,3
1986	58.349.872	94,2
1987	58.569.311	100,1
1988	72.844.043	449,2
1989	432.839.874	4.309,4
1990	1.779.936.594	14.186,6
1991	3.729.481.279	16.435,9
1992	6.253.916.082	24.839,5
1993	9.787.393.323	69.299,6
1994	23.854.339.821	103.835,2
1995	45.794.658.125	152.246,5
1996	77.240.833.399	215.026,1
1997	135.668.883.612	159.929,9
1998	170.549.123.166	175.729,0
1999	846.131.138.504	451.814,9
2000	1.186.306.671.808	259.621,2
2001	884.192.510.319	239.271,2

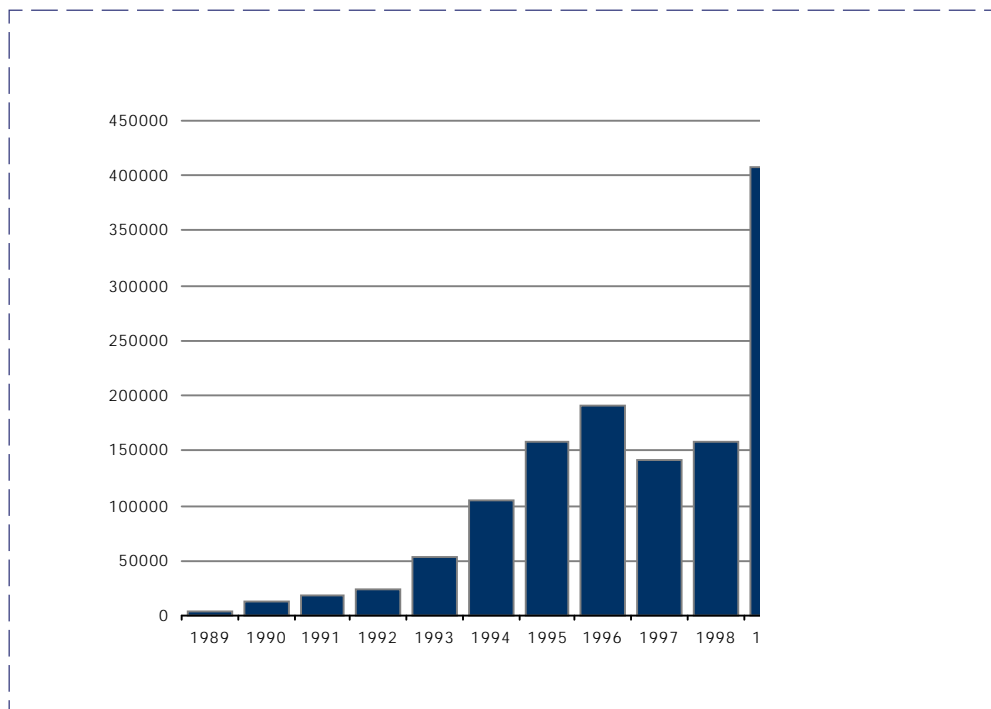
**Nilai Kapitalisasi Pasar BEJ (Rp miliar)**  
**JSX Market Capitalization (Rp billion)**  
**1977 - 2001**



**Nilai Kapitalisasi Pasar BES**  
**SSX Market Capitalization**  
**1989 - 2001**

<b>Akhir Periode</b> Last Period	<b>Jumlah (Saham)</b> Amount (Shares)	<b>Nilai/ (Rp miliar)</b> Value ( Rp Billion)
1989	444.120140	4.359,9
1990	1.601.215.848	13.191,5
1991	3.859.322.879	18.990,4
1992	5.387.632.743	23.838,8
1993	8.160.885.230	54.105,3
1994	19.919.065.482	103.790,8
1995	39.628.392.313	158.686,4
1996	66.803.718.010	191.572,0
1997	118.469.217.322	141.641,2
1998	147.686.576.370	157.858,7
1999	802.506.812.564	407.720,8
2000	1.117.384384.184	225.802,0
2001	772.349.033.241	197.899,1

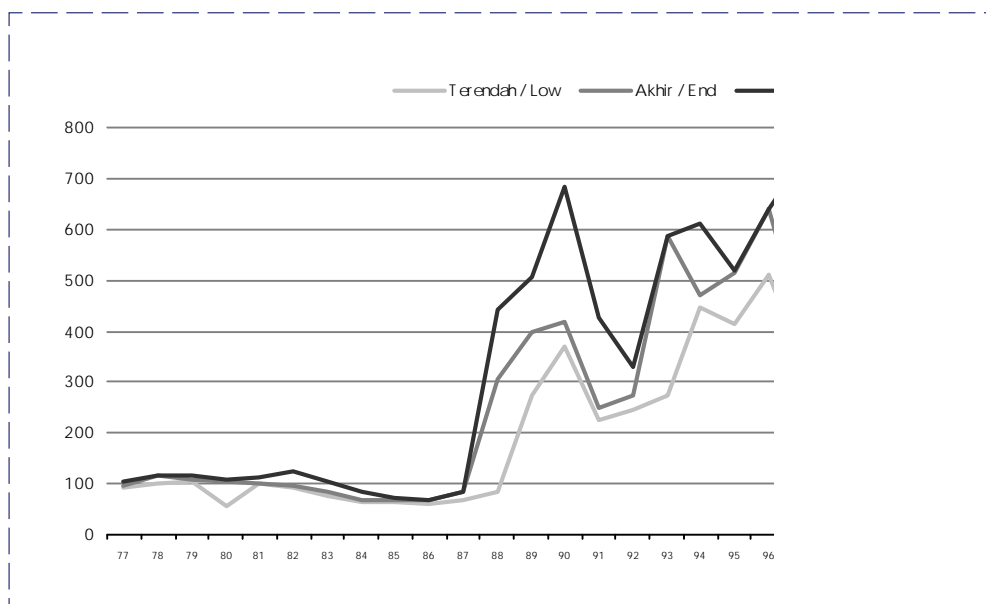
**Nilai Kapitalisasi Pasar BES (Rp miliar)**  
**SSX Market Capitalization (Rp billion)**  
**1989 - 2001**



**Indeks Harga Saham Gabungan (IHSG) Bursa Efek Jakarta**  
Share Price Index on JSX  
1977 - 2001

Periode Period	Tertinggi High	Terendah Low	Akhir End
1977	103,25	93,87	98,00
1978	114,99	98,56	114,99
1979	114,99	105,53	110,03
1980	108,61	56,01	103,54
1981	111,42	99,47	100,26
1982	123,27	93,87	95,00
1983	104,53	76,80	85,62
1984	84,70	63,53	67,68
1985	72,65	65,12	66,53
1986	69,69	61,58	69,69
1987	82,58	69,58	82,58
1988	442,20	82,60	305,12
1989	507,40	274,09	399,69
1990	681,94	371,20	417,79
1991	427,02	224,71	247,39
1992	331,05	246,95	274,33
1993	588,76	273,30	588,76
1994	612,88	447,04	469,64
1995	519,17	414,20	513,84
1996	637,43	512,48	637,43
1997	740,83	339,53	401,71
1998	554,10	256,83	398,03
1999	716,46	372,31	676,91
2000	703,48	404,11	416,32
2001	392,03	371,24	392,03

**Indeks Harga Saham Gabungan (IHSG) BEJ**  
Share Price Index on JSX  
1977 - 2001



**Indeks Harga Saham Gabungan (IHSG) Bursa Efek Surabaya**  
Share Price Index on SSX  
1989 - 2001

Periode Period	Tertinggi High	Terendah Low	Akhir End
1989	257,42	99,67	200,93
1990	356,32	201,70	223,12
1991	230,99	152,59	157,62
1992	170,80	153,48	158,43
1993	272,01	153,29	272,01
1994	364,37	270,09	313,47
1995	366,07	312,27	366,07
1996	569,31	366,11	568,58
1997	656,14	299,28	351,95
1998	506,48	216,44	351,51
1999	708,69	330,31	566,57
2000	569,84	262,88	267,63
2001	220,89	207,82	220,89

**Indeks Harga Saham Gabungan (IHSG) BES**  
Share Price Index on SSX  
1989 - 2001

