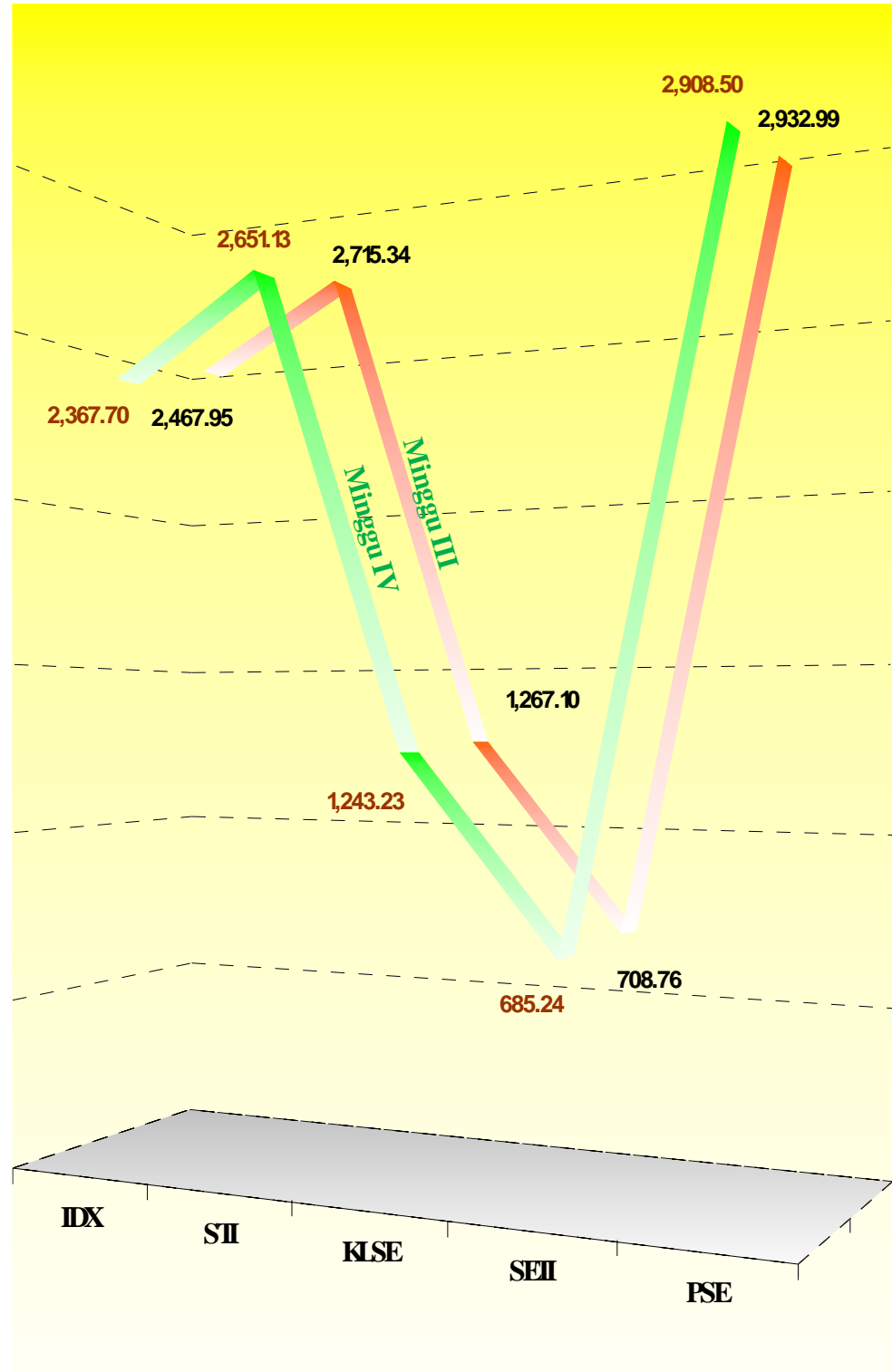




Minggu Ke-4 Oktober 2009
26 - 30 Oktober 2009

STATISTIK PASAR MODAL





Daftar Isi

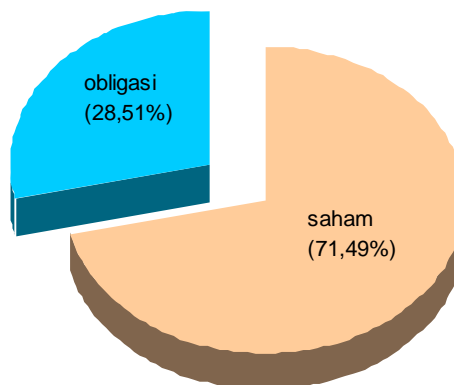
	Halaman
<i>Daftar Isi</i>	1
 <i>Perkembangan Emisi di Pasar Modal</i>	
Perkembangan Nilai Emisi.....	2
Tabel 1. Emisi Saham dan Emisi Obligasi Korporasi.....	4
Obligasi Korporasi	5
Obligasi Pemerintah RI - SUN	7
 <i>Perkembangan Indeks di Pasar Modal</i>	
IHSG, Nilai Kapitalisasi Pasar dan Nilai Perdagangan BEI.....	8
Tabel 2. IHSG dan Kapitalisasi Pasar	9
Tabel 3. Perkembangan Indeks Sektorial di BEI	10
Tabel 4. Indeks Saham Bursa Asean	11
Tabel 5. Indeks Saham Bursa Dunia	12
Tabel 6. Perubahan Indeks Bursa Dunia	13
 <i>Indikator Bursa</i>	
Tabel 7. Kapitalisasi Pasar Modal Indonesia.....	14
Tabel 8. Perdagangan Saham di Bursa Efek Indonesia (BEI)	14
Tabel 9. Perdagangan Obligasi SUN (Surat Utang Negara).....	15
Tabel 10. Perdagangan Obligasi Korporasi	15
Tabel 11. Perdagangan Exchange Traded Fund.....	16
Tabel 12. Volume Perdagangan	17
Tabel 13. Persentase Volume Perdagangan terhadap Total Perdagangan	17
Tabel 14. Nilai Perdagangan	18
Tabel 15. Persentase Nilai Perdagangan terhadap Total Perdagangan	18
 <i>Kinerja BUMN</i>	
Tabel 16. Nilai Kapitalisasi dan Persentase terhadap Nilai Kapitalisasi BEI	19
Tabel 17. Perkembangan Harga Saham	20
Tabel 18. Volume Perdagangan	20
Tabel 19. Nilai Perdagangan	21
Tabel 20. Frekuensi Perdagangan	21
 <i>Manajer Investasi</i>	
Tabel 21. Perkembangan Pengelolaan Dana oleh Manajer Investasi	22
Tabel 22. Pengelolaan Investasi dan Jumlah Nasabah	22
Tabel 23. Kinerja Reksadana	23
Tabel 24. Nilai Aktiva Bersih Reksa Dana per jenis.....	23
Tabel 25. Alokasi Dana Reksa Dana.....	24
Tabel 26. Pengelolaan Investasi Reksa Dana oleh Manajer Investasi	25
Tabel 27. Jumlah Nasabah dan Dana Reksa Dana Yang Dikelola oleh Manajer Investasi.	27
Tabel 28. Perkembangan Jumlah Dana Kelolaan Reksa Dana Yang Dikelola Manajer Investasi	29
 <i>Komposisi Kepemilikan Efek</i>	
Tabel 29. Komposisi Kepemilikan Efek Asing/Lokal yang tercatat di KSEI.....	31

PERKEMBANGAN EMISI DI PASAR MODAL

s.d 30 Oktober 2009

Jenis Emisi	Jumlah Emiten	Nilai (Rp Tn)
IPO Saham	485	90.208
Emisi II dst	-	0.483
Right Issue	-	321.204
PP	7	1.754
Jumlah	492	413.649
IPO Obligasi	173	49.593
Emisi II dst	-	113.504
Obl. Konversi	7	1.825
Sek. Kredit	1	0.003
Jumlah	181	164.925
Total Emisi	575	578.574
Obl.US\$	2	\$ 105Jt

Grafik Nilai Emisi



Perkembangan Nilai Emisi

Jumlah perusahaan yang memperoleh pernyataan efektif untuk menawarkan saham dan obligasi kepada masyarakat umum sampai dengan tanggal 30 Oktober 2009 adalah 575 emiten (termasuk 7 perusahaan publik yang tidak tercatat di bursa) dengan total nilai emisi Rp 578,574 triliun yang tersebar diberbagai sektor industri sebagai berikut :

No	Klasifikasi	Industri	Jumlah Emiten	Nilai (Rp Tn)	%	Jumlah Emiten	Nilai (Rp Tn)	%	Total Nilai (Rp Tn)	%	
			Saham :			Obligasi :					
1		Pertanian (Perkebunan)	18	7.98	1.93	8	3.88	2.35	26	11.86	2.05
2		Pertambangan	15	20.93	5.06	1	3.00	1.82	16	23.93	4.14
3		Industri Dasar & Kimia	60	26.85	6.49	21	7.94	4.81	81	34.79	6.01
4		Aneka Industri	70	17.78	4.30	9	3.02	1.83	79	20.80	3.59
5		Industri Barang Konsumsi	43	8.31	2.01	11	13.74	8.33	54	22.05	3.81
6		Properti & Real Estate	50	32.62	7.89	19	8.03	4.87	69	40.65	7.03
7		Infrastruktur, Utiliti & Transportasi	28	18.96	4.58	14	38.22	23.17	42	57.18	9.88
8		Kuangan	102	191.48	46.29	71	77.02	46.70	173	268.50	46.41
9		Perdagangan, Jasa & Investasi	99	87.38	21.12	27	10.08	6.11	126	97.46	16.85
10		Perusahaan Publik	7	1.36	0.33				7	1.36	0.24
		Total :	492	413.65	100.00	181	164.93	100.00	673	578.57	100.00

1 Keuangan (Obligasi dalam US Dollar) 2 US \$ 105 Jt.

EMISI EFEK

Perusahaan yang melakukan Penawaran Umum Perdana Saham (IPO), Right Issue/HMETD, Penawaran Umum Obligasi (IPO), Obligasi II, III dan selanjutnya, Obligasi Subordinasi, Syariah, Obligasi US\$, dll :

Periode : 2009

No.	Emiten	Obligasi	Tanggal Efektif	Nilai (Rp M)	Total (Rp M)
Emiten (IPO) :					
1	Trikonsel Oke	-	31-03-09	101,25	
2	Batavia Prosperindo Finance	-	19-05-09	49,5	
3	Inovisi Infracom	-	22-06-09	40,00	
4	Metropolitan Kentjana	-	29-06-09	199,50	
5	Katarina Utama	-	30-06-09	33,60	
6	Garda Tujuh Buana	-	30-06-09	211,00	
7	BW Plantation	-	19-10-09	666,05	
					1,300,90
Emiten (Right/HMETD) :					
1	Bank Danamon Indonesia	-	23-03-09	3.993,85	
2	Indoexchange	-	15-05-09	36,80	
3	Bank Kesawan	-	15-06-09	40,10	
4	Pool Advista Indonesia	-	29-06-09	27,50	
5	Bank Capital Indonesia	-	29-06-09	305,20	
6	Berlian Laju Tanker	-	30-06-09	591,73	
7	Ancora Indonesia Resources	-	11-09-09	117,58	
					5,112,75
Emiten (Obligasi) :					
1	Astra Sedaya Finance	Obligasi X tahun 2009	20-03-09	900,00	
2	Danareksa	Obligasi IV tahun 2009	31-03-09	200,00	
3	Matahari Putra Prima	Sukuk Ijarah II	31-03-09	250,00	
		Obligasi III tahun 2009	31-03-09	350,00	
4	Federal International Finance	Obligasi IX tahun 2009	21-04-09	1.000,00	
5	Indomobil Finance Indonesia	Obligasi III tahun 2009	21-04-09	500,00	
6	Adira Dinamika Multifinance	Obligasi III tahun 2009	04-05-09	500,00	
7	Summit Oto Finance	Obligasi III tahun 2009	07-05-09	600,00	
8	Berlian Laju Tanker	Obligasi IV tahun 2009	15-05-09	400,00	
		Sukuk Ijarah II tahun 2009	15-05-09	100,00	
9	Bank Tabungan Negara	Obligasi XIII tahun 2009	19-05-09	1,500,00	
10	Medco Energi International	Obligasi III tahun 2009	08-06-09	1,500,00	
11	Indofood Sukses Makmur	Obligasi V tahun 2009	08-06-09	1,610,00	
12	Bank Ekspor Indonesia	Obligasi IV tahun 2009	08-06-09	2,500,00	
13	Apexindo Pratama Duta	Obligasi III tahun 2009	09-06-09	600,00	
14	Perum Pegadaian	Obligasi XIII tahun 2009	22-06-09	1,500,00	
15	Bakrieland Development	Sukuk Ijarah I tahun 2009	29-06-09	200,00	
16	Bank Jabar Banten	Obligasi VI tahun 2009	30-06-09	750,00	
17	Sarana Multigriya Finansial	Obligasi I tahun 2009	30-06-09	300,00	
18	Bank Tabungan Pensiunan Nasional	Obligasi I tahun 2009	28-09-09	750,00	
19	Bank Pan Indonesia	Obligasi III tahun 2009	28-09-09	800,00	
					16.810,00

EMISI EFEK

Total Perusahaan yang telah memperoleh pernyataan efektif untuk penawaran umum saham (IPO / Right) dan penawaran umum Obligasi sampai dengan minggu keempat Oktober sebanyak 673 emiten (492 emiten yang melakukan emisi saham dan 181 emiten melakukan emisi Obligasi) dengan total nilai emisi Rp 578,574 triliun.

Tabel 1
EMISI SAHAM dan EMISI OBLIGASI KORPORASI
(Berdasarkan pernyataan efektif)

Tahun	SAHAM :						OBLIGASI :			
	Jumlah Emiten	^ %	Emisi Saham	^ %	Nilai Emisi (Rp milyar)	^ %	Jumlah Emiten	Nilai Emisi Obligasi (Rp juta)	^ %	Nilai Outstanding (Rp Juta)
2005	432	1,9	963.702.110.002	4,5	267.206,7	3,6	159	91.190.749,43	9,86	62.891.341,34
2006	444	2,8	1.034.521.505.388	7,3	280.958,84	5,1	162	102.640.850,00	12,56	67.805.542,00
2007	468	5,4	8.241.042.944.718	8,8	328.291,64	16,8	175	133.915.849,43	30,47	84.553.029,49
2008	485	3,6	8.399.187.971.091	1,92	407.235,06	24,05	178	148.115.849,43	10,60	72.979.442,32
Januari	470	0,4	8.242.802.944.718	0,0	328.995,64	0,2	173	133.915.849,43	0,00	83.401.493,62
Pebruari	472	0,4	8.255.530.989.390	0,2	333.570,52	1,4	175	137.765.849,43	2,87	86.852.418,62
Maret	473	0,4	8.340.919.421.180	1,0	374.438,55	12,3	176	142.715.849,43	3,59	84.071.486,65
April	473	0	8.341.546.421.180	0,0	374.765,84	0,1	176	142.715.849,43	0,0	86.482.236,65
Mei	475	0,4	8.344.139.983.180	0,03	375.704,80	0,25	177	144.315.849,43	1,12	86.547.824,18
Juni	478	0,6	8.354.246.370.691	0,12	381.027,64	1,42	178	145.915.849,43	1,11	82.531.624,18
Juli	480	0,4	8.365.685.701.691	0,14	393.313,90	3,22	178	145.915.849,43	0,0	79.159.274,18
Agustus	482	0,4	8.369.726.303.374	0,05	402.751,35	2,4	178	145.915.849,43	0,0	78.459.467,13
September	485	0,6	8.377.404.023.374	0,09	404.205,79	0,36	178	145.915.849,43	0,0	77.862.284,82
Oktober	485	0,0	8.377.404.023.374	0,0	404.205,79	0,0	178	45.915.849,43	0,0	73.636.542,32
Nopember	485	0,0	8.396.642.005.867	0,23	406.925,77	0,67	178	145.915.849,43	0,0	73.406.692,32
Desember	485	0,0	8.399.187.971.091	0,03	407.235,06	0,07	178	148.115.849,43	1,51	72.979.442,32
2009										
Januari	485	0,0	8.399.187.971.091	0,0	407.235,06	0,0	178	148.115.849,43	0,0	75.136.442,32
Pebruari	485	0,0	8.399.187.971.091	0,0	407.235,06	0,0	178	148.115.849,43	0,0	74.612.442,32
Maret	485	0,0	8.402.516.177.502	0,04	411.228,90	0,98	178	149.015.849,43	0,6	73.367.442,32
April	486	0,0	8.402.516.177.502	0,0	411.330,15	0,0	178	149.815.849,43	0,0	74.242.442,32
Mei	487	0,4	8,403,563,375,502	0,01	411,416,45	0,05	179	154,415,849,43	3,62	74,750,242,54
Juni	487	0,0	8,403,563,375,502	0,0	411,416,61	0,0	179	162,125,133,00	0,0	79,989,571,27
Juli	491	0,0	8,410,612,509,727	0,0	412,865,23	0,0	180	163,375,133,00	0,7	79,320,721,27
Agustus	491	0,0	8,410,612,509,727	0,0	412,865,23	0,0	180	163,375,133,00	0,0	79,215,221,27
September	491	0,0	8,410,838,620,838	0,0	412,982,81	0,0	181	164,925,000,00	0,0	78,503,117,01
Oktober										
02	491	0,0	8,410,838,620,838	0,0	412,982,81	0,0	181	164,925,000,00	0,0	78,503,117,01
09	491	0,0	8,410,838,620,838	0,0	412,982,81	0,0	181	164,925,000,00	0,0	79,366,117,01
16	491	0,0	8,410,838,620,838	0,0	412,982,81	0,0	181	164,925,000,00	0,0	79,366,117,01
23	492	0,0	8,412,049,629,838	0,0	413,648,87	0,0	181	164,925,000,00	0,0	79,366,117,01
30	492	0,0	8,412,049,629,838	0,0	413,648,87	0,0	181	164,925,000,00	0,0	78,299,133,72

Obligasi Korporasi

* Obligasi Korporasi Outstanding yang diperdagangkan melalui Bursa Efek Indonesia s.d 30 Oktober 2009

Obligasi Korporasi	Tanggal Jatuh Tempo	Nilai (Rp milyar)	Obligasi Korporasi	Tanggal Jatuh Tempo	Nilai (Rp milyar)		
1	Indorent I Th. 2004 Seri B	11/11/09	65.45	54	Bank Lampung I Th. 2005 Seri B	07/13/10	59.00
2	Indorent I Syariah Ijarah Th. 2004	11/11/09	62.85	55	Sarana Multigriya Finansial I Th. 2009	07/15/10	300.00
3	Newera Footwear Indonesia I Th. 2003	11/20/09	31.50	56	PTPN 3, I Th. 2003 Seri A	08/05/10	140.00
4	Astra Sedaya F. VII Th. 2006 Seri F	12/13/09	50.00	57	PTPN 3, I Th. 2003 Seri B	08/05/10	10.00
5	Berlina I Th. 2004 Seri B	12/15/09	32.00	58	BCA F. II Th. 2007 Seri C	08/27/10	125.00
6	Berlina I Syariah Ijarah Th. 2004	12/15/09	85.00	59	Obligasi Astra Sedaya F. IX Th. 2008 Seri D09/06/10	08/06/10	68.00
7	HITS I Th. 2004 Seri B	12/17/09	72.45	60	Bank Ekspor Indonesia III Th. 2006 Seri B09/28/10	09/28/10	200.00
8	HITS I Syariah Ijarah Th. 2004	12/17/09	82.80		Obligasi Astra Sedaya Finance X Tahun 2009 Seri B10/02/10	10/02/10	
9	Infoasia Teknologi Global I Th. 2004	Seri C12/23/09	65.00				134.00
10	Obligasi Astra Sedaya F. VIII Th. 2007 Seri D12/28/09	35.00		61	Indosat III Th. 2003 Seri B	10/22/10	640.00
11	Obligasi Tunas Financindo Sarana V Th 2008 Seri B	02/20/10	25.00	62	PTPN 5, I Th. 2003 Seri A	11/12/10	294.00
12	Tunas Financindo Sarana IV Th. 2007 Seri C02/22/10	350.00		63	PTPN 5, I Th. 2003 Seri B	11/12/10	6.00
13	Astra Sedaya F. VI Amortisasi Th. 2005 Seri K02/24/10	100.00		64	Obligasi Bhakti F. II Th. 2007	12/03/10	150.00
14	BCA F. II Th. 2007 Seri B	02/27/10	150.00	65	Jasa Marga X Th. 2002 Seri O	12/04/10	650.00
15	Obligasi Astra Sedaya F. IX Th. 2008 Seri C03/06/10	133.00		66	Obligasi Astra Sedaya F. VIII Th. 2007 Seri F12/28/10	12/28/10	200.00
16	Summit Oto F. II Th. 2007 Seri C	03/08/10	350.00	67	Obligasi Tunas Financindo S. V Th 2008 Seri C02/20/11	02/20/11	50.00
17	Obligasi Astra Sedaya Finance X Tahun 2009 Seri A	04/07/10	372.00	68	BCA F. II Th. 2007 Seri D	02/27/11	125.00
18	Apexindo Pratama Duta I Th. 2005	04/08/10	510.00	69	Obligasi Astra Sedaya F. IX Th. 2008 Seri E03/06/11	03/06/11	145.00
19	Apexindo Pratama Duta I Syariah Ijarah Th. 2005	04/08/10	240.00		Obligasi I Bakrieland Development Th. 2008 Seri A 03/11/11	03/11/11	220.00
20	Bank NTB I Th. 2005 Seri B	04/08/10	140.00	70	Obligasi TPJ I Th. 2008 Seri A	03/13/11	97.00
21	Bank Danamon I Th. 2007 Seri A	04/19/10	250.00	71	PTPN VII Th. 2004 Seri B	03/26/11	10.00
22	Federal International F. VII Th. 2007 Seri C05/02/10	300.00		72	Obligasi Astra Sedaya Finance X Tahun 2009 Seri C04/02/11	04/02/11	50.00
23	Federal International F. IX Th. 2009 Seri A05/04/10	365.00		73	Obligasi IV Danareksa Th. 2009	04/14/11	200.00
24	Indomobil Finance Indonesia III Th. 2009 seri A05/05/10	126.00		74	Federal International F. IX Th. 2009 Seri B04/29/11	04/29/11	93.00
25	Kresna Graha Sekurindo I Th. 2007 Seri C05/08/10	75.00		75	Indomobil Finance Indonesia III Th. 2009 seri B04/30/11	04/30/11	170.00
26	Bank Sulut III Th. 2005	05/12/10	200.00	76	Federal International F. VII Th. 2007 Seri D05/02/11	05/02/11	350.00
27	Obligasi Federal International F. VIII Th. 2008 Seri B05/13/10	190.00		77	Federal International F. VIII Th. 2008 Seri C05/13/11	05/13/11	360.00
28	Adira Dinamika M.F. III Th. 2009 seri A	05/18/10	46.00	78	Adira Dinamika M.F. III Th. 2009 seri B	05/13/11	51.00
29	Summit Oto Finance III Th. 2009 seri A	05/24/10	200.00	79	Summit Oto Finance III Th. 2009 seri B	05/19/11	35.00
30	Berlian Laju Tanker IV Th. 2009 seri A	05/28/10	60.00	80	WOM F. IV Thn 2007 Seri B	05/29/11	185.00
31	Bank Mayapada II Th. 2007 Seri A	05/29/10	50.00	81	Obligasi Bhakti Securities I Th. 2008	05/30/11	150.00
32	WOM F. IV Thn 2007 Seri A	05/29/10	225.00	82	Adira Dinamika Multi F. II Thn 2006 Seri C06/08/11	06/08/11	90.00
33	Bahtera Adimina Samudra I Th. 2000	06/05/10	75.00	83	Obligasi III Danareksa Th. 2008 Seri B	06/20/11	130.00
34	Perum Pegadaian IX Th. 2002 Seri A	06/06/10	211.00	84	Indosat IV Th. 2005	06/21/11	815.00
35	Perum Pegadaian IX Th. 2002 Seri B	06/06/10	13.05	85	Indosat Syariah Ijarah Th. 2005	06/21/11	285.00
36	Perum Pegadaian IX Th. 2002 Seri C	06/06/10	2.00	86	Obligasi Astra Sedaya F. VIII Th. 2007 Seri G06/28/11	06/28/11	200.00
37	Perum Pegadaian IX Th. 2002 Seri D	06/06/10	43.50	87	Sukuk Ijarah I Bakrieland Development Th 2009 seri A	07/07/11	60.00
38	WOM F. III Thn 2006 Seri C	06/07/10	160.00	88	Bank BNI I Th. 2003	07/10/11	1,000.00
39	Adira Dinamika Multi F. II Thn 2006 Seri B06/08/10	90.00		89	Perum Pegadaian X Th. 2003 Seri A	07/11/11	336.50
40	CMNP III Th. 2005 Seri C	06/08/10	100.00	90	Obligasi Radiant Utama Interinsco I Th. 2007	07/12/11	100.00
41	Bank Ekspor Indonesia II Th. 2005 Seri B06/17/10	200.00		91	PTPN 3, II Th. 2004 Seri C	07/13/11	35.00
42	Oto Multiartha V Th. 2007 Seri B	06/19/10	500.00	92	Obligasi Astra Sedaya F. IX Th. 2008 Seri F09/06/11	09/06/11	221.00
43	Bank Panin II Th. 2007 Seri A	06/19/10	50.00	93	Bank Ekspor Indonesia III Th. 2006 Seri C09/28/11	09/28/11	150.00
44	Obligasi III Danareksa Th. 2008 Seri A	06/20/10	120.00	94	Obligasi Astra Sedaya Finance X Tahun 2009 Seri D10/02/11	10/02/11	84.00
45	Semen Baturaja I Th. 2004	06/22/10	50.00	95	Bumi Serpong Damai II Th. 2006	10/20/11	600.00
46	Obligasi I Jaya Ancol Th. 2007 Seri A	06/27/10	80.00	96	WOM F. IV Thn 2007 Seri C	11/29/11	590.00
47	Obligasi Astra Sedaya F. VIII Th. 2007 Seri E06/28/10	200.00		97	Obligasi V Bank Jabar Th. 2006	12/08/11	1,000.00
48	Bank Ekspor Indonesia IV Th. 2009 seri A06/28/10	309.00			Obligasi Tunas Financindo S. V Th 2008 Seri D02/20/12	02/20/12	175.00
49	Bank BTN XI Th. 2005	07/06/10	750.00	98	Mobile-8 Telekom I Th. 2007	03/15/12	675.00
50	Obligasi Truba Jaya Engineering I Th. 2007	07/08/10	200.00	99	Bank Victoria II Th. 2007	03/21/12	200.00
51	PAM Lyonnaise Jaya I Th. 2005 Seri C07/12/10	200.00		100	Obligasi Astra Sedaya Finance X Tahun 2009 Seri E04/02/12	04/02/12	260.00
52	Ricky Putra Globalindo I Syariah Ijarah Th. 2005	07/12/10	60.40	101	Matahari Putra Prima III Th. 2009 seri A04/14/12	04/14/12	250.00
53	Obligasi II Trimegah Securities Th. 2007 Seri C07/12/10	150.00		102	Sukuk Ijarah Matahari Putra Prima II Th. 2009 seri A04/14/12	04/14/12	90.00
				103	Bank Danamon I Th. 2007 Seri B	04/19/12	1,250.00
				104	Excelcom II Th. 2007	04/26/12	1,500.00

Obligasi Korporasi

Obligasi Korporasi	Tanggal Jatuh Tempo	Nilai (Rp milyar)	Obligasi Korporasi	Tanggal Jatuh Tempo	Nilai (Rp milyar)	
105	Federal International F. IX Th. 2009 Seri B04/29/12	542.00			55.00	
106	Indomobil Finance Indonesia III Th. 2009 seri C04/30/12	204.00	159	Indosat V Th. 2007 Seri A	05/29/14	1,230.00
107	BNI Securities I Th. 2007	300.00	160	Sukuk Ijarah Indosat II Th. 2007	05/29/14	400.00
108	Adira Dinamika M.F. III Th. 2009 seri C	403.00	161	Obligasi XIII Bank BTN Th. 2009 seri C	05/29/14	900.00
109	Indofood Sukses Makmur IV Th. 2007	2,000.00	162	Medco Energi Internasional II Th. 2009 seri B06/17/14	06/17/14	986.50
110	Summit Oto Finance III Th. 2009 seri C	365.00	163	Bank Ekspor Indonesia IV Th. 2009 seri C06/18/14	06/18/14	607.00
111	Berlian Laju Tanker IV Th. 2009 seri B	150.00	164	Indofood Sukses Makmur V Th. 2009	06/18/14	1,610.00
112	Sukuk Ijarah Berlian Laju Tanker II Th. 2009 seri A	45.00	165	Bank Panin II Th. 2007 Seri C	06/19/14	200.00
113	Bank Mayapada II Th. 2007 Seri B	300.00	166	Apexindo Pratama Duta II Th. 2009 seri B06/19/14	06/19/14	300.00
114	Obligasi XIII Bank BTN Th. 2009 seri A	300.00	167	Obligasi XIII Perum Pegadaian Th 2009 seri A107/01/14	01/14	350.00
115	Panin Sekuritas III Th. 2007	200.00	168	Obligasi XIII Perum Pegadaian Th 2009 seri A207/01/14	01/14	100.00
116	Medco Energi Internasional II Th. 2009 seri A06/17/12	513.50	169	Indah Kiat I Th. 1999 Seri A	10/01/14	133.04
117	Bank Ekspor Indonesia IV Th. 2009 seri B06/18/12	157.00	170	Lontar Papyrus I Th. 2000 Seri A	10/01/14	250.00
118	Bank Panin II Th. 2007 Seri B	1,400.00	171	Pindo Deli I Th. 1997 Seri A	10/01/14	25.70
119	Apexindo Pratama Duta II Th. 2009 seri A06/19/12	300.00	172	Tjiwi Kimia I Th. 1996 Seri A	10/01/14	26.20
120	Obligasi I Jaya Ancol Th. 2007 Seri B	120.00	173	Obligasi Bank Panin III th. 2009	10/06/14	800.00
121	Obligasi I Jakarta Propertindo Th. 200706/28/12	200.00	174	Bank BTPN I Th.2009 seri B	10/07/14	400.00
122	Pakuwon Jati I Th. 1996	38.48	175	PPLN VII Th. 2004	11/11/14	1,500.00
123	Obligasi Berlian Laju Tanker III Th. 200707/05/12	700.00	176	Subordinasi Bank Mayapada I Th. 200502/25/15	02/25/15	45.50
124	Sukuk Ijarah Berlian Laju Tanker Th. 200707/05/12	200.00	177	Obligasi TPJ I Th. 2008 Seri C	03/13/15	368.00
125	Obligasi IV Adhi Th. 2007	375.00	178	Obligasi APOL II Th. 2008 Seri B	03/18/15	324.00
126	Sukuk Mudharabah I Adhi Th. 2007	125.00	179	Obligasi Indosat VI Th. 2008 Seri B	04/09/15	320.00
127	Sukuk Ijarah I Bakrieland Development Th 2009 seri B	90.00	180	Obligasi PLN10 Th. 2009 Seri B	01/09/16	425.00
128	Obligasi Surya Citra Televisi II Th. 200707/10/12	575.00	181	Sukuk Ijarah PLN III Th. 2009 Seri B	01/09/16	467.00
129	Obligasi Duta Pertiwi V Th. 2007	500.00	182	Perum Pegadaian XI Th. 2006 Seri A	05/23/16	400.00
130	Obligasi Japfa I Th. 2007	500.00	183	Perum Pegadaian XI Th. 2006 Seri B	05/23/16	100.00
131	PAM Lyonnaise Jaya I Th. 2005 Seri D07/12/12	100.00	184	Bank Ekspor Indonesia IV Th. 2009 seri D06/18/16	06/18/16	1,427.00
	Obligasi Bakrie Telecom I Th. 2007	650.00	185	PLN VIII Th. 2006 Seri A	06/21/16	1,335.10
	Obligasi II Danareksa Th. 2007	500.00	186	Syariah Ijarah PLN I Th. 2006	06/21/16	200.00
	Bank BTPN I Th.2009 seri A	350.00	187	Jasa Marga XII Seri Q Th. 2006	07/06/16	1,000.00
	Obligasi II Bank Lampung Th. 2007	300.00	188	Bank BTN XII Th. 2006	09/19/16	1,000.00
132	Obligasi Ciliandra Perkasa II Th. 2007	500.00	189	Obligasi Subordinasi I Permata bank Th. 200612/14/16	12/16	500.00
133	Obligasi Bentoel I Th. 2007	1,350.00	190	Subordinasi I Bank Victoria Th. 2007	03/21/17	200.00
134	Obligasi V Bank DKI Th. 2008	425.00	191	Indosat V Th. 2007 Seri B	05/29/17	1,370.00
135	Obligasi I Malindo Feedmill Th. 2008	300.00	192	Subordinasi Bank Mayapada II Th. 200705/29/17	05/29/17	150.00
	Obligasi I Bakrieland Development Th. 2008 Seri B03/11/13	280.00	193	Jasa Marga XIII Seri R Th. 2007	06/21/17	1,500.00
136	Obligasi TPJ I Th. 2008 Seri B	149.50	194	Obligasi XIII Perum Pegadaian Th 2009 seri B07/01/17	07/01/17	650.00
137	Obligasi APOL II Th. 2008 Seri A	276.00	195	Obligasi PLN IX Th. 2007 Seri A	07/10/17	1,500.00
138	Obligasi Lautan Luas III Th. 2008	500.00	196	Sukuk Ijarah PLN II Th. 2007	07/10/17	300.00
139	Obligasi Indosat VI Th. 2008 Seri A	760.00	197	Obligasi XII Perum Pegadaian Th. 2007 Seri B09/04/17	09/04/17	230.00
140	Sukuk Ijarah Indosat III Th. 2008	570.00	198	Indah Kiat I Th. 1999 Seri B	10/01/17	500.00
141	Obligasi XIII Bank BTN Th. 2009 seri B	300.00	199	Lontar Papyrus I Th. 2000 Seri B	10/01/17	500.00
142	Obligasi Mayora Indah III Th. 2008	100.00	200	Pindo Deli I Th. 1997 Seri B	10/01/17	100.00
143	Sukuk Mudharabah I Mayora Indah Th. 200806/05/13	200.00	201	Tjiwi Kimia I Th. 1996 Seri B	10/01/17	100.00
144	Obligasi III Danareksa Th. 2008 Seri C	250.00	202	Obligasi Subordinasi Bank Mega Th. 200701/15/18	01/18	1,000.00
145	Sukuk Ijarah I Summarecon Agung Th. 200806/25/13	200.00	203	Obligasi Subordinasi I Bank DKI Th. 200803/04/18	03/18	325.00
146	Obligasi Summarecon Agung II Th. 200806/25/13	100.00		Efek Beragun Aset Danareksa SMF I-KPR BTN Kelas A	03/10/18	85.11
147	Sukuk Ijarah Metrodata Electronics I Th. 200807/04/13	85.50		Obligasi Subordinasi II Bank NISP Th. 200803/11/18	03/18	600.00
148	Obligasi Aneka Gas Industri I Th. 200807/08/13	80.00		Obligasi Subordinasi Bank Panin II Th. 200804/09/18	04/18	1,500.00
149	Sukuk Ijarah Aneka Gas Industri I Th. 200807/08/13	160.00		Sukuk Subordinasi Mudharabah B. Muamalat Th. 2008	07/10/19	314.00
150	Jasa Marga XI Seri P Th. 2003	1,000.00		Perum Pegadaian X Th. 2003 Seri B	07/11/18	63.50
151	Subordinasi I Bank BRI Th. 2004	500.00		Obligasi XIII Perum Pegadaian Th 2009 seri C07/01/19	07/01/19	400.00
152	Obligasi PLN10 Th. 2009 Seri A	1,015.00		PLN VIII Th. 2006 Seri B	06/21/21	865.00
153	Sukuk Ijarah PLN III Th. 2009 Seri A	293.00		Obligasi PLN IX Th. 2007 Seri B	07/10/22	1,200.00
154	Matahari Putra Prima III Th. 2009 seri B04/14/14	52.00		Indosat II Th. 2002 Seri B	11/06/32	200.00
155	Sukuk Ijarah Matahari Putra Prima II Th. 2009 seri B04/14/14	136.00				
156	Subordinasi I Bank BTN Th. 2004	250.00				
157	Berlian Laju Tanker IV Th. 2009 seri C	190.00				
158	Sukuk Ijarah Berlian Laju Tanker II Th. 2009 seri B	190.00				
				Total.....		78,299.13

Obligasi Pemerintah RI - SUN

* Obligasi Pemerintah RI yang diperdagangkan melalui Bursa Efek Indonesia s.d 30 Oktober 2009

Obligasi Pemerintah RI	Tanggal Issue	Nilai (Rp milyar)	Obligasi Pemerintah RI	Tanggal Issue	Nilai (Rp milyar)
Fixed Rate Bonds					
1 Obligasi Pem. 2002 Seri FR0010	20-11-02	9,891.68	51 Obligasi Pem. 2002 Seri VR0025	20-11-02	6,909.30
2 Obligasi Pem. 2002 Seri FR0011	20-11-02	800.00	52 Obligasi Pem. 2002 Seri VR0026	20-11-02	5,442.14
3 Obligasi Pem. 2002 Seri FR0012	20-11-02	1,653.14	53 Obligasi Pem. 2002 Seri VR0027	20-11-02	5,442.14
4 Obligasi Pem. 2002 Seri FR0013	20-11-02	4,630.60	54 Obligasi Pem. 2002 Seri VR0028	20-11-02	7,033.99
5 Obligasi Pem. 2002 Seri FR0014	20-11-02	1,185.95	55 Obligasi Pem. 2002 Seri VR0029	20-11-02	12,212.32
6 Obligasi Pem. 2002 Seri FR0015	20-11-10	5,533.94	56 Obligasi Pem. 2002 Seri VR0030	20-11-02	10,503.02
7 Obligasi Pem. 2002 Seri FR0016	20-11-02	4,118.94	57 Obligasi Pem. 2002 Seri VR0031	20-11-02	25,322.35
8 Obligasi Pem. 2002 Seri FR0017	20-11-02	8,124.06	58 Obligasi Negara RI Seri VR0032	17-04-08	5,000.00
9 Obligasi Pem. 2002 Seri FR0018	20-11-02	5,785.06			
10 Obligasi Pem. 2002 Seri FR0019	20-11-02	11,798.34			
11 Obligasi Pem. 2002 Seri FR0020	20-11-02	10,966.34			145,082.80
12 Obligasi Negara 2002 Seri FR0021	24-12-02	2,234.00			
13 Obligasi Negara 2003 Seri FR0022	10-04-03	7,115.00			
14 Obligasi Negara 2003 Seri FR0023	11-11-03	15,172.50	Zero Coupon Bond		
15 Obligasi Negara 2003 Seri FR0024	6-11-03	4,328.00	59 Obligasi Negara 2007 Seri ZC0003	22-11-07	1,441.00
16 Obligasi Negara 2004 Seri FR0025	29-04-04	6,663.00	60 Obligasi Negara Seri ZC0004	31-01-08	5,887.00
17 Obligasi Negara 2004 Seri FR0026	26-08-04	13,632.00	61 Obligasi Negara Seri ZC0005	31-01-08	1,358.00
18 Obligasi Negara 2005 Seri FR0027	27-01-05	13,089.00			
19 Obligasi Negara 2005 Seri FR0028	23-02-05	10,100.00			
20 Obligasi Negara 2005 Seri FR0030	15-05-05	11,560.00			
21 Obligasi Negara 2005 Seri FR0031	16-06-05	11,769.00			8.686,00
22 Obligasi Negara 2005 Seri FR0032	01-09-05	1,560.00			
23 Obligasi Negara 2006 Seri FR0033	26-01-06	9,945.00	Obligasi Retail		
24 Obligasi Negara 2006 Seri FR0034	26-01-06	16,759.00	62 Obl. Republik Indonesia Seri ORI002	28-03-07	6,193.20
25 Obligasi Negara 2006 Seri FR0035	17-02-06	11,025.00	63 Obl. Republik Indonesia Seri ORI003	12-09-07	9,304.70
26 Obligasi Negara 2006 Seri FR0036	20-04-06	9,386.00	64 Obl. Republik Indonesia Seri ORI004	12-03-08	13,399.77
27 Obligasi Negara 2006 Seri FR0037	18-05-06	2,450.00	65 Obl. Negara Seri ORI005	03-09-08	2,714.88
28 Obligasi Negara 2006 Seri FR0038	24-08-06	3,083.00			
29 Obligasi Negara 2006 Seri FR0039	24-08-06	4,175.00			
30 Obligasi Negara 2006 Seri FR0040	21-09-06	12,914.00			31,612.54
31 Obligasi Negara 2007 Seri FR0042	25-01-07	14,426.00			
32 Obligasi Negara 2007 Seri FR0043	20-02-07	14,417.00	Surat Perbendaharaan Negara		
33 Obligasi Negara 2007 Seri FR0044	19-04-07	16,554.00	66 SPN Seri SPN 20100415	28-04-09	3,950.00
34 Obligasi Negara 2007 Seri FR0045	24-05-07	6,400.00	67 SPN Seri SPN 20100114	15-01-09	5,500.00
35 Obligasi Negara 2007 Seri FR0046	19-08-07	16,855.00	68 SPN Seri SPN 20100218	19-02-09	3,100.00
36 Obligasi Negara 2007 Seri FR0047	30-08-07	17,590.00	69 SPN Seri SPN 20100311	12-03-09	2,900.00
37 Obligasi Negara 2007 Seri FR0048	27-09-07	5,691.00	70 SPN Seri SPN 20100513	14-05-09	2,600.00
38 Obligasi Negara RI seri FR0049	14-02-08	5,123.00	71 SPN Seri SPN 20100610	11-06-09	2,000.00
39 Obligasi Negara RI seri FR0050	24-01-08	5,911.00	72 SPN Seri SPN 20100715	16-07-09	2,000.00
40 Obligasi Negara RI seri FR0051	15-01-09	2,525.00	73 SPN Seri SPN 20100902	04-09-09	1,450.00
41 Obligasi Negara RI seri FR0052	20-08-09	4,550.00	74 SPN Seri SPN 20101007	08-10-09	850.00
					24,350.00
		341,489.55	Surat Berharga Syariah Nasional		
			75 SBSN seri IFR0001	26-08-08	2,714.70
			76 SBSN seri IFR0002	26-08-08	1,985.00
			77 SBSN seri IFR0003	27-10-09	200.00
					4.899,70
Variable rate Bonds					
42 Obligasi Pem. Mei 1999 Seri VR0016	28-05-99	1,796.72			
43 Obligasi Pem. 2002 Seri VR0017	25-09-02	1,504.67			
44 Obligasi Pem. 2002 Seri VR0018	25-10-02	4,386.48			
45 Obligasi Pem. 2002 Seri VR0019	20-11-02	13,856.23	Sukuk Negara Retail		
46 Obligasi Pem. 2002 Seri VR0020	20-11-02	9,899.01	76 Sukuk Negara Retail Seri SR-001	23-02-09	5,556.29
47 Obligasi Pem. 2002 Seri VR0021	20-11-02	7,546.33			
48 Obligasi Pem. 2002 Seri VR0022	20-11-02	9,666.75			5,556.29
49 Obligasi Pem. 2002 Seri VR0023	20-11-02	8,652.06			
50 Obligasi Pem. 2002 Seri VR0024	20-11-02	9,909.30			
			Total		561.676,87

Sumber : Bursa Efek Indonesia

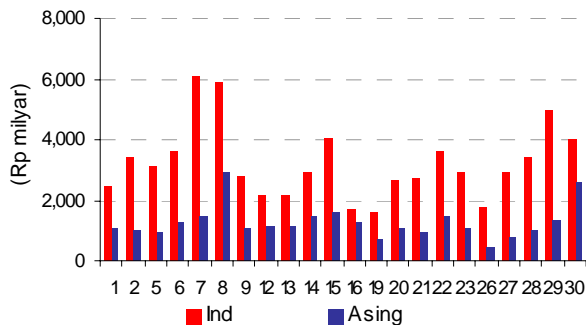
Riset Pasar Modal - Biro RISTI Bapepam - LK

Perkembangan Indeks di Pasar Modal

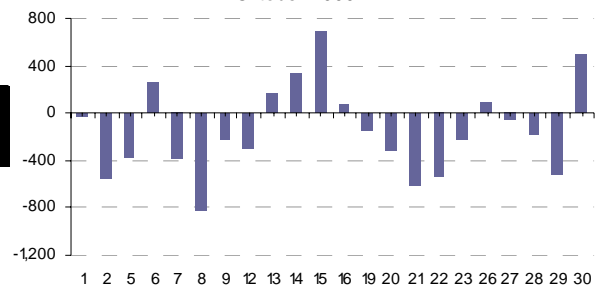
IHSG, Nilai Kapitalisasi Pasar dan Nilai Perdagangan BEI
26 - 30 Oktober 2009

Tgl	IHSG	Perubahan		Kap. (Rp T)	Perdagangan		Indonesia		Asing		Selisih B/J (Rp M)
		Poin	%		Total (Rp M)	Saham (Rp M)	Nilai (Rp M)	%	Nilai (Rp M)	% Asing	
26	2,467.71	-0.23	(0.01)	1,949.84	2,239.63	2,237.27	1,799.99	80.45	437.28	19.55	87.71
27	2,425.20	-42.51	(1.72)	1,919.20	3,684.27	3,679.95	2,941.51	79.93	738.44	20.07	-63.09
28	2,355.31	-69.89	(2.88)	1,864.16	4,474.14	4,469.17	3,453.36	77.27	1,015.81	22.73	-173.75
29	2,344.03	-11.28	(0.48)	1,854.78	6,299.58	6,293.41	4,952.63	78.70	1,340.77	21.30	-530.57
30	2,367.70	23.67	1.01	1,873.51	6,642.42	6,636.62	4,004.93	60.35	2,631.69	39.65	498.15

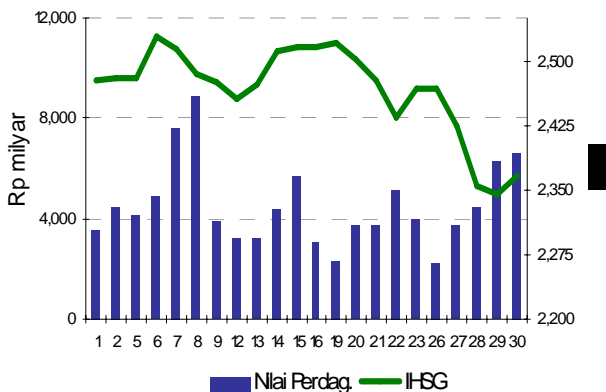
Nilai Transaksi Indonesia - Asing
Oktober 2009



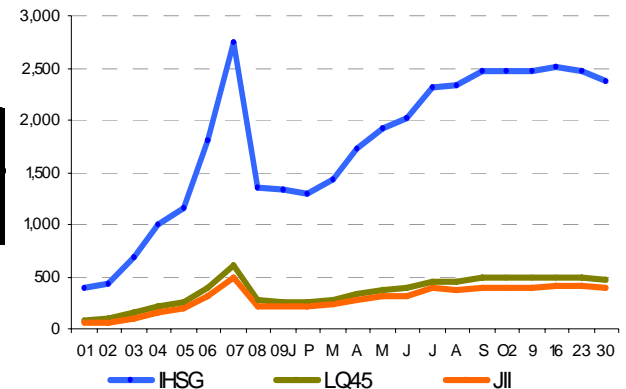
Aliran Dana Asing
Oktober 2009



Nilai Perdagangan dan IHSG
Oktober 2009



Grafik IHSG, LQ45 dan JII
Oktober 2009



Periode	Index			Kapitalisasi Pasar (Rp miliar)				
	IHSG	LQ45	JII	BEI	LQ45	%	JII	%
2005	1.162,63	254,35	199,75	801.252,70	592.272,50	73,92	395.649,84	49,38
2006	1.805,52	388,29	307,62	1.249.074,50	929.263,81	74,40	620.165,31	49,65
2007	2.745,83	599,82	493,01	1.988.326,20	1.381.086,13	69,46	1.105.897,25	55,62
2008	1.355,41	270,23	216,19	1.076.490,53	710.394,70	65,99	428.525,74	39,81
2009								
Jan	1.332,67	262,56	213,63	1.071.524,79	690.318,47	64,42	423.463,35	39,52
Peb	1.285,48	249,01	214,12	1.034.904,44	753.029,11	72,76	424.428,24	41,01
Mar	1.434,07	283,08	236,79	1.150.598,88	856.067,27	74,40	469.355,17	40,79
Apr	1,722.77	341.73	279.87	1,370,388.09	1,040,765.43	75.95	547,810.35	39.97
Mei	1,916.83	373.07	307.14	1,517,235.28	1,136,319.82	74.89	601,184.89	39.62
Juni	2,026.78	392.12	321.46	1,596,673.78	1,195,766.17	74.89	713,005.70	44.66
Juli	2,323.24	454.42	385.22	1,823,713.66	1,386,511.64	76.03	854,467.34	46.85
Agustus	2,341.54	456.27	380.66	1,847,633.40	1,436,190.42	77.73	844,374.48	45.70
September	2,467.59	483.96	401.53	1,944,356.75	1,523,359.37	78.35	890,677.97	45.81
Oktober								
2	2,479.85	487.11	398.78	1,955,316.37	1,533,284.94	78.42	884,581.10	45.24
9	2,474.40	486.32	401.60	1,952,013.89	1,531,835.56	78.47	890,834.82	45.64
16	2,515.81	495.41	410.24	1,985,976.63	1,560,482.67	78.58	910,017.53	45.82
23	2,467.95	485.10	402.01	1,950,472.14	1,527,999.38	78.34	891,912.67	45.73
30	2,367.70	464.20	383.67	1,873,512.48	1,462,181.30	78.04	851,217.12	45.43

Sumber: Bursa Efek Indonesia

Riset Pasar Modal - Biro RISTI Bapepam - LK

Perkembangan Indeks

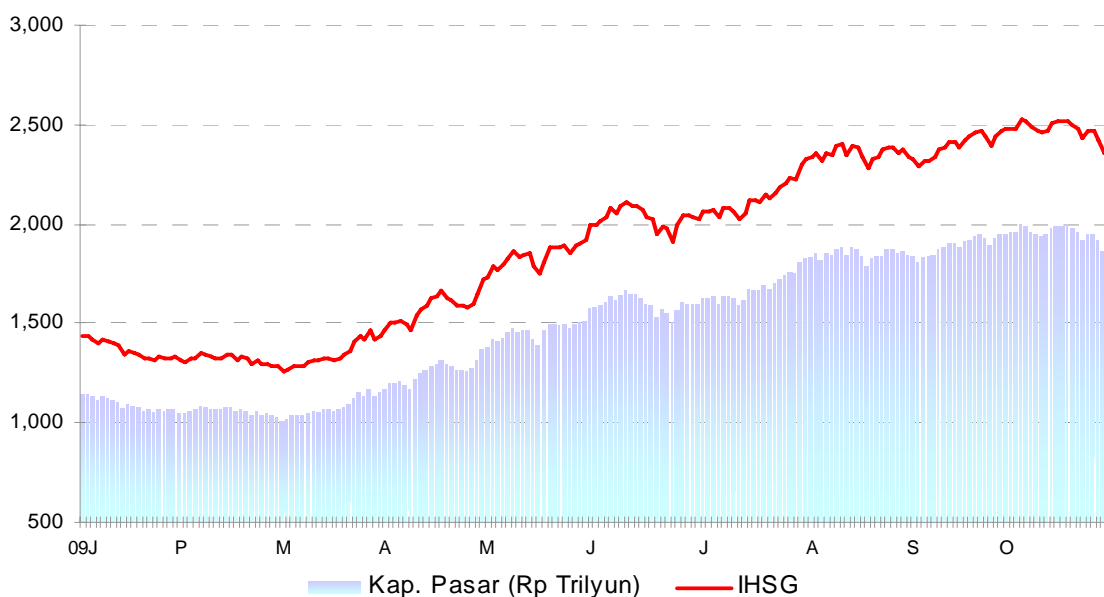
Tabel 2

INDEKS HARGA SAHAM GABUNGAN (IHSG) DAN NILAI KAPITALISASI PASAR

Bursa Efek Indonesia

Periode	Tertinggi	IHSG		Perubahan	Jumlah Saham	Nilai Kapitalisasi (Rp. M)
		Terendah	Akhir			
2005	1.192,20	994,77	1.162,63	162,40	712.985.123.204	801.252,70
2006	1.805,52	1.171,70	1.805,52	642,89	924.488.804.314	1.249.074,50
2007	2.810,96	1.678,04	2.745,83	940,31	1.128.173.554.108	1.988.326,20
2008	2.830,26	1.111,39	1.355,41	-1.390,42	1.374.411.626.346	1.076.490,53
2009						
Januari	1.437,34	1.315,59	1.332,67	-22,74	1.381.768.657.797	1.071.524,79
Pebruari	1.350,64	1.285,48	1.285,48	-47,19	1.381.973.446.196	1.034.904,44
Maret	1.462,75	1.256,11	1.434,07	148,60	1.382.047.574.348	1.150.598,88
April	1.722,77	1.461,75	1.722,77	288,69	1.388.185.316.542	1.370.388,09
Mei	1.916,83	1.729,58	1.916,83	194,07	1.388.279.471.916	1.517.235,28
Juni	2.108,81	1.914,39	2.026,78	109,95	1.393.016.084.556	1.596.673,78
Juli	2.323,24	2.020,14	2.323,24	296,46	1.403.183.734.280	1.823.713,66
Agustus	2.399,28	2.277,75	2.341,54	-35,71	1.422.993.981.229	1.847.633,40
September	2.467,59	2.285,93	2.467,59	126,05	1.425.132.957.786	1.944.356,75
Oktober						
1 - 2	2.479,85	2.477,97	2.479,85	12,26	1.425.642.396.876	1.955.316,37
5 - 9	2.528,15	2.474,40	2.474,40	-5,45	1.425.931.836.652	1.952.013,89
12 - 16	2.515,81	2.456,69	2.515,81	41,41	1.425.962.398.653	1.985.976,63
19 - 23	2.520,92	2.433,18	2.467,95	-47,86	1.426.539.917.715	1.950.472,14
26 - 30	2.467,71	2.344,03	2.367,70	-100,25	1.430.714.878.623	1.873.512,48
26	-	-	2.467,71	-0,23	1.426.539.924.215	1.949.842,48
27	-	-	2.425,20	-42,51	1.430.623.146.655	1.919.201,59
28	-	-	2.355,31	-69,89	1.430.650.653.655	1.864.163,40
29	-	-	2.344,03	-11,28	1.430.714.578.155	1.854.782,82
30	-	-	2.367,70	23,67	1.430.714.878.623	1.873.512,48

IHSG dan Kapitalisasi Pasar



Januari 2008 - 30 Oktober 2009

Sumber: Bursa Efek Indonesia

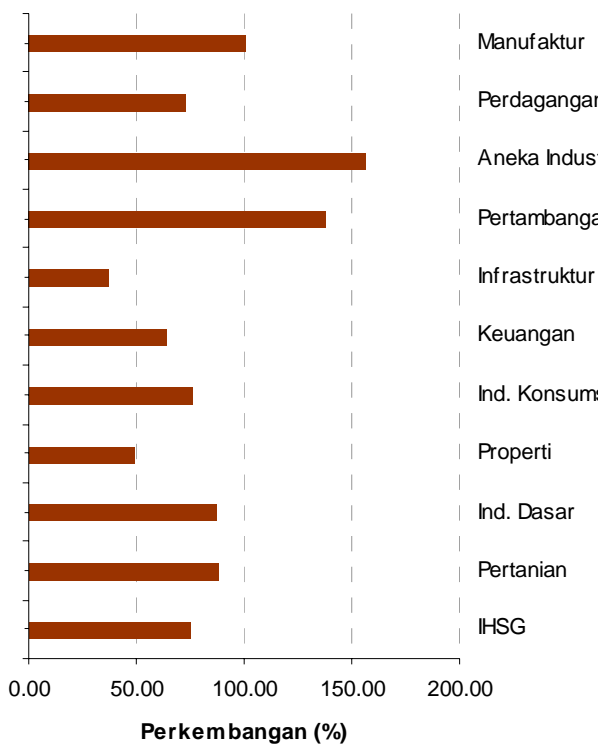
Riset Pasar Modal - Biro RISTI Bapepam - LK

Perkembangan Indeks

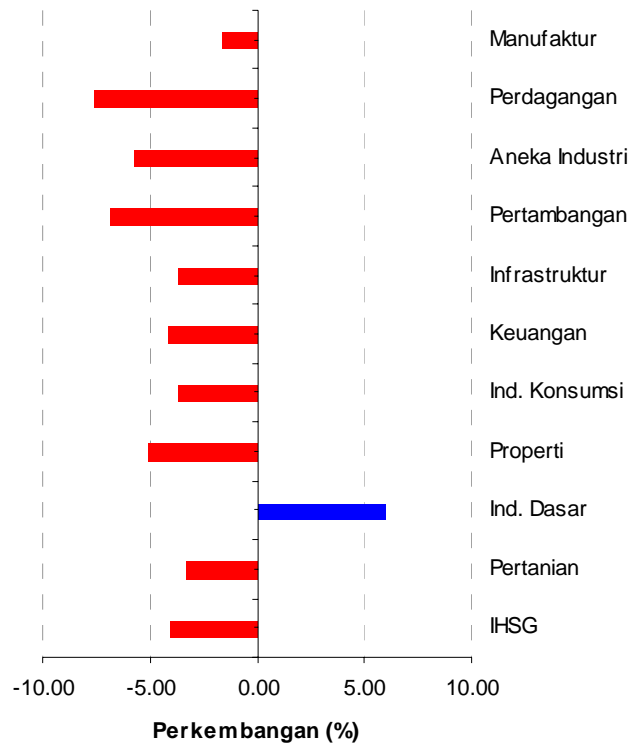
Tabel 3
Perkembangan Index Sektoral di Bursa Efek Indonesia

Index Harga Saham	31-12-08	30-09-09	30-10-09	perubahan dari tahun 2008		perubahan dari bulan sebelumnya	
				+/-	%	+/-	%
1 IHSG	1,355.41	2,467.59	2,367.70	1,012.29	74.69	-99.89	-4.05
2 Pertanian	918.77	1,784.21	1,725.33	806.56	87.79	-58.88	-3.30
3 Ind. Dasar	134.99	238.46	252.88	117.89	87.34	14.42	6.05
4 Properti	103.49	162.29	153.99	50.50	48.79	-8.30	-5.11
5 Ind. Konsumsi	326.84	597.63	575.40	248.55	76.05	-22.23	-3.72
6 Keuangan	176.33	300.70	288.32	111.98	63.51	-12.38	-4.12
7 Infrastruktur	490.35	695.64	669.85	179.51	36.61	-25.79	-3.71
8 Pertambangan	877.68	2,238.03	2,085.22	1,207.54	137.58	-152.81	-6.83
9 Aneka Industri	214.94	584.96	551.76	336.83	156.71	-33.19	-5.67
10 Perdagangan	148.33	277.40	256.38	108.05	72.84	-21.02	-7.58
11 Manufaktur	236.54	481.85	474.21	237.67	100.48	-7.64	-1.59

Grafik Perkembangan IHSG dan Indeks Sektoral dari Penutupan Tahun 2008



Grafik Perkembangan IHSG dan Indeks Sektoral dari bulan sebelumnya



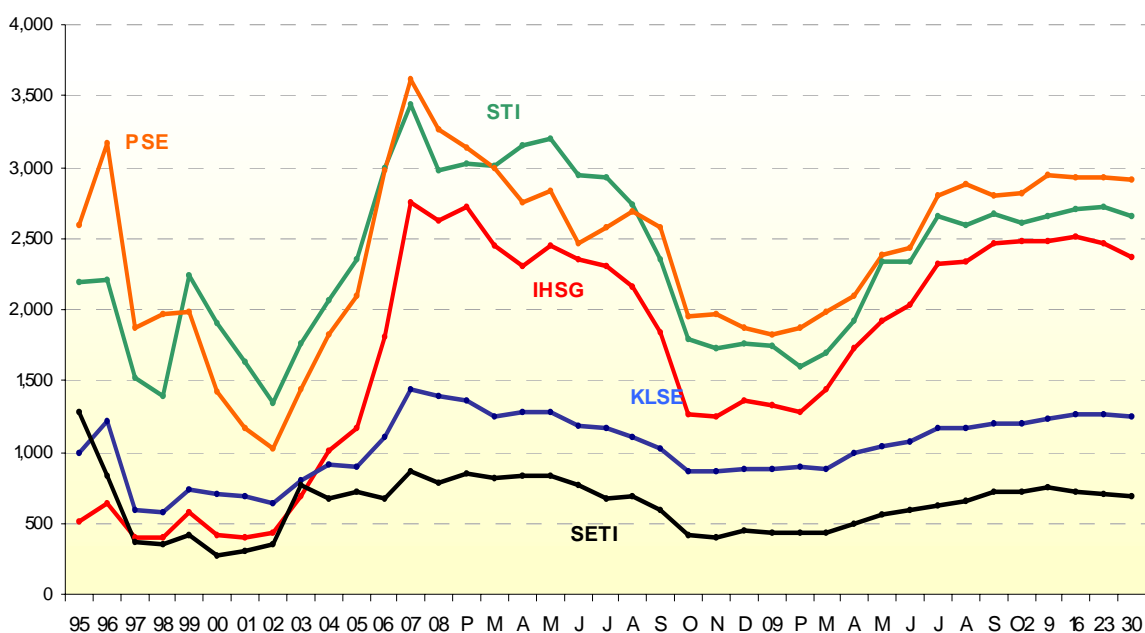
Sumber: Bursa Efek Indonesia

Perkembangan Indeks

Indeks Harga Saham Bursa Asean :

Tabel 4

Akhir Periode	Indonesia (IHSG)	Singapore (STI)	Malaysia (KLSE)	Thailand (SETI)	Philippina (PSE)
2005	1.162,63	2.347,34	899,79	713,73	2.096,04
2006	1.805,52	2.985,83	1.096,24	679,84	2.982,54
2007	2.745,83	3.445,82	1.447,04	858,10	3.621,60
2008	1.355,41	1.761,56	876,75	449,96	1.872,85
2009					
Januari	1.332,67	1.746,47	884,45	437,69	1.825,09
Pebruari	1.285,48	1.594,87	890,67	431,52	1.872,22
Maret	1.434,07	1.699,99	872,55	431,50	1.986,22
April	1.722,77	1.920,28	990,74	491,69	2.103,50
Mei	1.916,83	2.329,08	1.044,11	560,41	2.389,31
Juni	2.026,78	2.333,14	1.075,24	597,48	2.437,99
Juli	2.323,24	2.659,20	1.174,90	624,00	2.798,33
Agustus	2.341,54	2.592,90	1.174,27	653,25	2.884,18
September	2.467,59	2.672,57	1.202,08	717,07	2.800,82
Oktober					
02	2.479,85	2.604,53	1.206,25	724,56	2.820,03
09	2.474,40	2.652,51	1.233,82	746,87	2.942,78
16	2.515,81	2.708,12	1.256,77	717,12	2.922,82
23	2.467,95	2.715,34	1.267,10	708,76	2.932,99
30	2.367,70	2.651,13	1.243,23	685,24	2.908,50



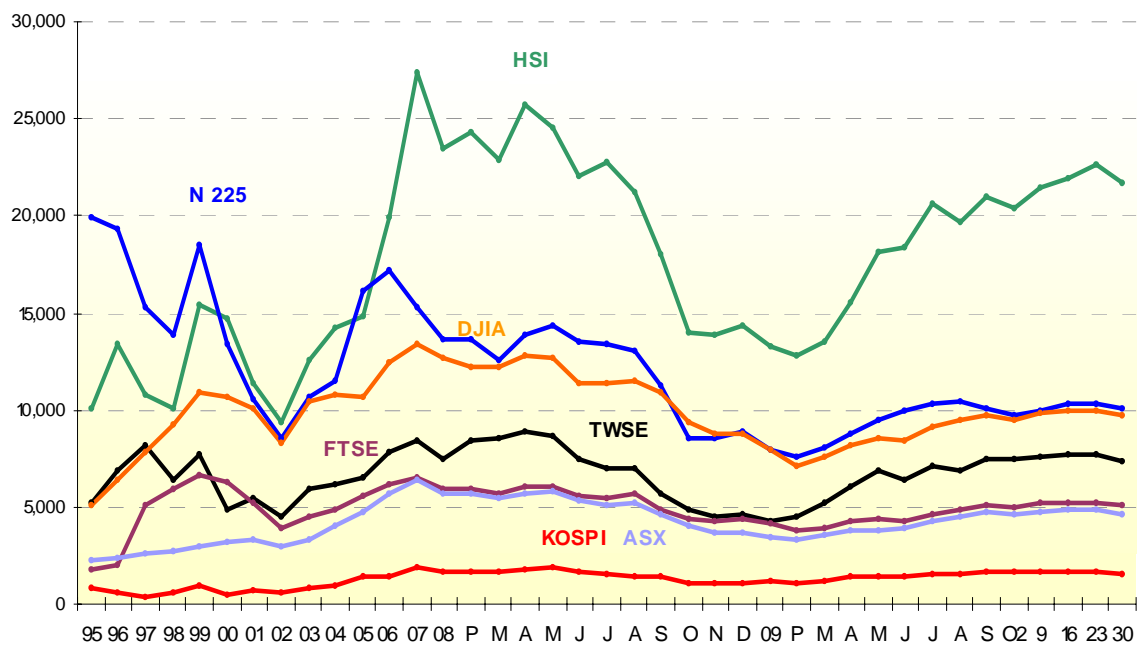
Sumber: Bloomberg

Perkembangan Indeks

Indeks Harga Saham di Bursa Negara lainnya :

Tabel 5

Akhir Periode	Kor.Sel (KOSPI)	Hongkong (HSI)	Jepang (Nikkei 225)	Taiwan (TWSE)	NYSE (Dow Jones)	London (FTSE)	Australia (ASX)
2005	1.379,37	14.876,43	16.111,43	6.548,34	10.717,50	5.618,80	4.708,80
2006	1.434,46	19.964,72	17.225,83	7.823,72	12.463,15	6.220,80	5.644,30
2007	1.897,13	27.370,60	15.307,78	8.396,95	13.365,87	6.476,90	6.423,70
2008	1.124,47	14.387,48	8.859,56	4.591,22	8.776,39	4.434,17	3.659,30
2009							
Januari	1.162,11	13.278,21	7.994,05	4.353,70	8.000,86	4.149,64	3.478,10
Pebruari	1.063,03	12.811,57	7.568,42	4.557,15	7.062,93	3.830,09	3.296,90
Maret	1.206,26	13.576,02	8.109,53	5.210,84	7.608,92	3.926,14	3.532,30
April	1.369,36	15.520,99	8.828,26	5.992,57	8.168,12	4.243,71	3.744,70
Mei	1.395,89	18.171,00	9.522,50	6.890,44	8.500,33	4.417,94	3.813,30
Juni	1.390,07	18.378,73	9.958,44	6.432,16	8.447,00	4.249,21	3.947,80
Juli	1.557,29	20.573,33	10.356,83	7.077,71	9.171,61	4.608,36	4.249,50
Agustus	1.591,85	19.724,19	10.492,53	6.825,95	9.496,28	4.908,90	4.484,10
September	1,673.14	20,955.25	10,133.23	7,509.17	9,712.28	5,133.90	4,739.30
Oktober							
02	1,644.63	20,375.49	9,731.87	7,411.88	9,487.67	4,988.70	4,606.10
09	1,646.79	21,499.44	10,016.39	7,571.96	9,864.94	5,161.87	4,754.50
16	1,640.36	21,929.90	10,257.56	7,715.10	9,995.91	5,190.24	4,842.60
23	1,640.17	22,589.73	10,282.99	7,649.28	9,972.18	5,242.57	4,859.70
30	1,580.69	21,752.90	10,034.74	7,340.08	9,712.73	5,044.55	4,646.90



Sumber: Bloomberg

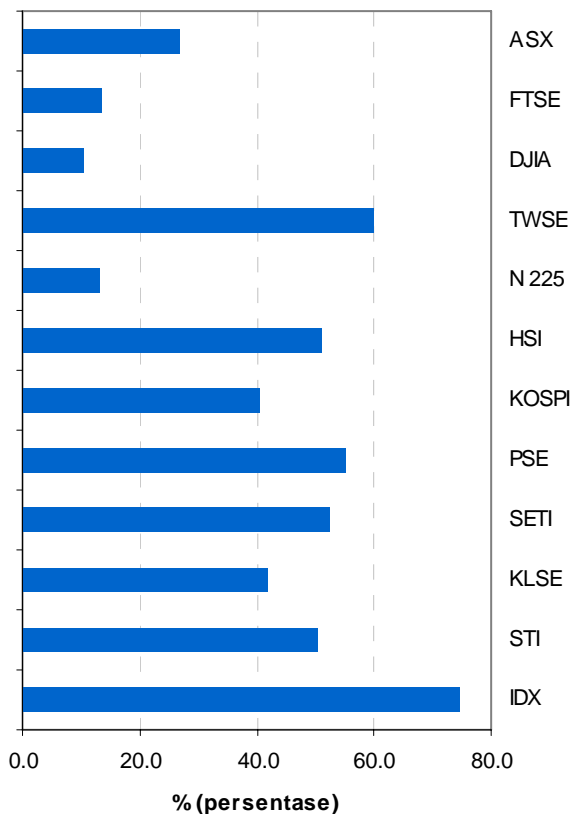
Riset Pasar Modal - Biro RISTI Bapepam - LK

Perkembangan Indeks

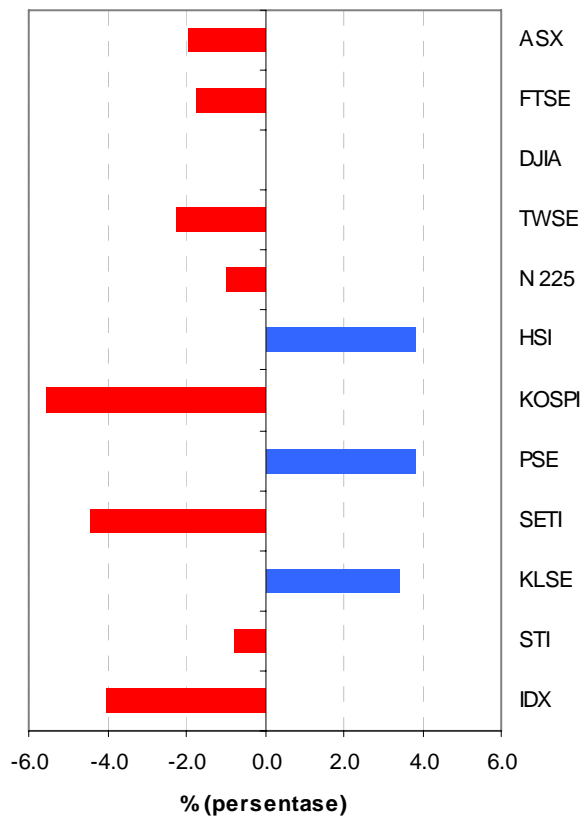
Tabel 6
INDEKS BURSA DUNIA

Bursa	31-12-08	30-09-09	30-10-09	Perubahan		Perubahan	
				+/-	%	+/-	%
IDX	1,355.41	2,467.59	2,367.70	1,012.29	74.69	-99.89	-4.05
STI	1,761.56	2,672.57	2,651.13	889.57	50.50	-21.44	-0.80
KLSE	876.75	1,202.08	1,243.23	366.48	41.80	41.15	3.42
SETI	449.96	717.07	685.24	235.28	52.29	-31.83	-4.44
PSE	1,872.85	2,800.82	2,908.50	1,035.65	55.30	107.68	3.84
KOSPI	1,124.47	1,673.14	1,580.69	456.22	40.57	-92.45	-5.53
HSI	14,387.48	20,955.25	21,752.90	7,365.42	51.19	797.65	3.81
N 225	8,859.56	10,133.23	10,034.74	1,175.18	13.26	-98.49	-0.97
TWSE	4,591.22	7,509.17	7,340.08	2,748.86	59.87	-169.09	-2.25
DJIA	8,776.39	9,712.28	9,712.73	936.34	10.67	0.45	0.00
FTSE	4,434.17	5,133.90	5,044.55	610.38	13.77	-89.35	-1.74
ASX	3,659.30	4,739.30	4,646.90	987.60	26.99	-92.40	-1.95

**Perubahan Indeks
dari Tahun sebelumnya**



**Perubahan Indeks
dari bulan sebelumnya**



Sumber: Bloomberg

Indikator Bursa

Tabel 7
Kapitalisasi Pasar Modal Indonesia

Periode	Kapitalisasi Pasar			Total Kapitalisasi (4 = 1+2+3)	Rp. Milyar
	Saham 1	Obligasi Korporasi 2	Obligasi Pemerintah 3		Produk Domestik Bruto (harga berlaku)
2005	801.252,70	62.891,34	399.859,31	1.264.003,35	2.784.960,40
2006	1.249.074,50	67.805,54	418.751,20	1.735.631,24	3.339.479,60
2007	1.988.326,20	84.653,03	475.577,78	2.548.557,01	3.957.403,90
2008	1.076.490,53	72.979,44	525.694,73	1.675.164,70	4.954.029,00
2009					
Jan	1.071.524,79	75.136,44	534.894,73	1.681.555,96	-
Peb	1.034.904,44	74.612,44	551.351,02	1.660.867,90	-
Mar	1.150.598,88	73.367,44	556.658,02	1.780.624,34	1.300.297,00
Apr	1,370,388.09	75,320.24	541,408.02	1,987,116.35	-
Mei	1,517,235.28	75,500.24	560,633.02	2,153,368.54	-
Juni	1,596,673.78	80,202.57	552,476.52	2,229,352.88	-
Juli	1,823,713.66	79,320.72	555,225.52	2,458,259.91	-
Agustus	1,847,633.40	79,196.52	557,800.87	2,484,630.80	-
September	1,831,302.67	78,528.12	560,626.87	2,470,457.66	-
Oktober	1,873,512.48	78,299.13	561,676.87	2,513,488.49	-

Tabel 8
PERDAGANGAN SAHAM
BURSA EFEK INDONESIA

Periode	Volume (Saham)	Nilai (Rp M)	Frekuensi (x)	Hari Bursa	Rata-rata Perdagangan per hari		
					Volume (Saham)	Nilai (Rp M)	Frekuensi (x)
2005	401.868.034.588	406.006,3	4.011.916	243	1.653.777.920	1.670,8	16.510
2006	436.935.587.228	445.708,1	4.805.001	242	1.805.518.955	1.841,8	19.855
2007	1.039.541.453.055	1.050.154,3	11.861.328	246	4.225.778.264	4.268,9	48.217
2008	787.775.846.423	1.064.526,2	13.416.702	240	3.282.399.360	4.435,5	55.903
2009							
Januari	40.557.937.621	31.391,2	804.995	19	2.134.628.296	1.652,2	42.368
Februari	36.828.779.021	24.663,4	803.830	20	1.841.438.951	1.233,2	40.192
Maret	40.081.676.968	36.787,5	950.255	20	2.004.083.848	1.839,4	47.513
April	188.503.592.788	79.411,5	2.161.844	20	9.425.179.639	3.970,6	108.092
Mei	282.750.920.231	130.919,57	2.784.079	20	14.137.546.012	6.545,98	139.204
Juni	185.467.360.609	126.868,33	2.504.611	22	8.430.334.573	5.766,74	113.846
Juli	138.405.882.060	114.624,0	2.064,353	21	6.590.756,289	5.458,3	98.303
Agustus	185.121.466,104	121,857.79	2,325,080	20	9,256,073,305	6,092.89	116,254
September	80,123,353,261	66,804.06	1,429,695	18	4,451,297,403	3,711.34	79,428
Oktober	100,299,804,419	98,969.02	2,075,362	22	4,559,082,019	4,498.59	94,335
1 - 2	7,686,063,220	7,974.10	179,155	2	3,843,031,610	3,987.05	89,578
5 - 9	27,835,889,224	29,211.65	561,106	5	5,567,177,845	5,842.33	112,221
12 - 16	18,147,883,173	19,605.56	438,275	5	3,629,576,635	3,921.11	87,655
19 - 23	20,372,281,897	18,861.28	403,517	5	4,074,456,379	3,772.26	80,703
26 - 30	26,257,686,905	23,316.43	493,309	5	5,251,537,381	4,663.29	98,662
26	3,622,609,447	2,237.27	68,849	1	3,622,609,447	2,237.27	68,849
27	4,522,100,720	3,679.95	84,852	1	4,522,100,720	3,679.95	84,852
28	5,601,033,639	4,469.17	103,449	1	5,601,033,639	4,469.17	103,449
29	7,035,480,317	6,293.41	121,633	1	7,035,480,317	6,293.41	121,633
30	5,476,462,782	6,636.62	114,526	1	5,476,462,782	6,636.62	114,526

Sumber: Bursa Efek Indonesia

Riset Pasar Modal - Biro RISTI Bapepam - LK

Indikator Bursa

Tabel 9
**PERDAGANGAN OBLIGASI SUN
 MELALUI OTC-FITS & PLTO BEI**

Periode	Obligasi Tercatat (Outstanding) (Rp M)	FITS		PLTO		Hari Bursa	Rata-rata Transaksi per hari			
		Volume (Rp M)	Frekuensi (X)	Volume (Rp M)	Jumlah Pelapor		FITS Volume (Rp M)	FITS Frekuensi (X)	PLTO Volume (Rp M)	PLTO Jumlah Pelapor
2005	399.859,31	521.005,24	24.405	-	-	243	2.144,05	100	-	-
2006	418.751,20	31.166,87	3.185	263.157,43	11.991	242 / 80	128,26	13	3.289,47	150
2007	475.577,78	46,83	252	1.245.466,56	55.829	246	0,19	1	5.062,87	227
2008	525.694,73	2,16	38	939.202,40	50.409	245	0,01	0	3.833,48	206
2009										
Jan	534.894,73	0,15	2	45.586,99	2.790	19	0,01	0	2.399,32	147
Peb	551.351,02	0,10	2	52.334,23	3.089	20	0,01	0	2.616,71	154
Maret	546.658,02	0,05	1	58.438,41	3.510	20	0,00	0	2.921,92	176
April	541.408,02	0,00	0	54.689,45	4.854	20	0,00	0	2.734,47	243
Mei	560.633,02	0,00	0	68.310,72	5.803	20	0,00	0	3.415,54	290
Juni	552.476,52	0,00	0	84.580,62	5.014	22	0,00	0	3.844,57	228
Juli	555.225,52	0,00	0	57.437,38	4.040	21	0,00	0	2.735,11	192
Agustus	557,800,87	0,00	0	64,958,69	4,106	20	0,00	0	3,247,93	205
September	560,626,87	0,00	0	38,320,36	2,723	13	0,00	0	2,947,72	209
1 - 4	559,800,87	0,00	0	9,991,18	773	4	0,00	0	2,497,79	193
7 - 11	559,800,87	0,00	0	13,384,91	985	5	0,00	0	2,676,98	197
14 - 17	559,800,87	0,00	0	10,231,08	668	3	0,00	0	3,410,36	223
24 - 25	560,626,87	0,00	0	6,987,58	415	2	0,00	0	3,493,79	208
28 - 30	559,800,87	0,00	0	10,551,22	760	3	0,00	0	3,517,07	253
28	560,626,87	0,00	0	3,706,84	230	1	0,00	0	3,706,84	230
29	560,626,87	0,00	0	3,649,34	255	1	0,00	0	3,649,34	255
30	560,626,87	0,00	0	3,195,05	275	1	0,00	0	3,195,05	275
Oktober	560,626,87	0,00	0	0,00	0	2	0,00	0	0,00	0
1 - 2	560,626,87	0,00	0	0,00	0	2	0,00	0	0,00	0

Tabel 10
**PERDAGANGAN OBLIGASI KORPORASI
 MELALUI OTC-FITS & PLTO BEI**

Periode	Obligasi Tercatat (Outstanding) (Rp M)	FITS		PLTO		Hari Bursa	Rata-rata Transaksi per hari			
		Volume (Rp M)	Frekuensi (X)	Volume (Rp M)	Jumlah Pelapor		FITS Volume (Rp M)	FITS Frekuensi (X)	PLTO Volume (Rp M)	PLTO Jumlah Pelapor
2005	62.891.342	23.946,63	5.023	-	-	243	98,55	21	-	-
2006	67.805.542	8.570,89	2.753	24.867,49	6.202	242 / 80	35,42	11	310,84	78
2007	84.553,03	0,34	9	69.611,92	15.594	246	0,00	0	282,98	63
2008	72.979,44	0,00	0	53.727,67	12.306	245	0,00	0	219,30	50
2009										
Jan	75.136,44	0,00	0	2.804,71	674	19	0,00	0	147,62	35
Peb	74.612,44	0,00	0	2.444,27	618	20	0,00	0	122,21	31
Maret	73.367,44	0,00	0	2.526,59	579	20	0,00	0	126,33	29
April	75.320,24	0,00	0	4.672,48	774	20	0,00	0	233,62	39
Mei	75.500,24	0,00	0	3.031,15	687	20	0,00	0	151,56	34
Juni	80.202,57	0,00	0	3.635,08	1.049	22	0,00	0	165,23	48
Juli	79.320,72	0,00	0	3.342,24	1.001	21	0,00	0	159,15	48
Agustus	79.196,52	0,00	0	2.088,86	639	20	0,00	0	104,44	32
September	78.528,12	0,00	0	1.294,79	349	13	0,00	0	99,60	27
1 - 4	79.196,52	0,00	0	314,12	91	4	0,00	0	78,53	23
7 - 11	78.682,62	0,00	0	408,20	127	5	0,00	0	81,64	25
14 - 17	78.682,62	0,00	0	487,22	115	3	0,00	0	162,41	38
24 - 25	78.678,12	0,00	0	39,67	15	2	0,00	0	19,84	8
28 - 30	78.528,12	0,00	0	564,44	105	3	0,00	0	188,15	35
28	78.528,12	0,00	0	298,00	40	1	0,00	0	298,00	40
29	78.528,12	0,00	0	49,00	28	1	0,00	0	49,00	28
30	78.528,12	0,00	0	217,44	37	1	0,00	0	217,44	37
Oktober	78.503,12	0,00	0	0,00	0	2	0,00	0	0,00	0
1 - 2	78.503,12	0,00	0	0,00	0	2	0,00	0	0,00	0

Sumber : Biro Transaksi Lembaga Efek

Riset Pasar Modal - Biro RISPI Bapepam - LK

Indikator Bursa

Tabel 11

**PERDAGANGAN EXCHANGE TRADED FUND
BURSA EFEK INDONESIA**

Periode	Jumlah Unit Penyertaan Tercatat di BEI	Volume Transaksi	Nilai (Rp juta)	Frekuensi (x)	Hari Bursa	Rata-rata per hari		
						Volume	Nilai (Rp juta)	Frekuensi (x)
2007	166.794.696	17.806.000	10.877,74	320	5	3.561.200	2.175,55	64
2008	209.671.927	211.109.000	100.932,65	10.247	240	879.621	420,55	43
2009								
Januari	209.671.927	2.000	0,51	2	19	105	0,03	0
Pebruari	209.671.927	15.000	4,16	14	20	750	0,21	1
Maret	209.671.927	3.663.900	970,93	7	20	183.195	48,55	0
April	209,671,927	263,500	80,28	39	16	16,469	5,02	2
Mei	209,671,927	360,000	120,80	46	20	18,000	6,04	2
Juni	209,671,927	479,000	175,79	66	20	23,950	8,79	3
Juli	209,671,927	273,500	114,22	77	21	13,024	5,44	4
Agustus	209,671,927	388,000	176,59	63	19	20,421	9,29	3
September	209,671,927	69,000	31,71	18	18	3,833	1,76	1
Oktober	209,671,927	214,500	100,24	33	22	9,750	4,56	2
1 - 2	209,671,927	3,000	1,44	2	2	1,500	0,72	1
5 - 9	209,671,927	90,000	41,26	14	5	18,000	8,25	3
12 - 16	209,671,927	45,000	20,46	9	5	9,000	4,09	2
19 - 23	209,671,927	76,000	36,83	7	5	15,200	7,37	1
26 - 30	209,671,927	500	0,25	1	5	100	0,05	0
26	209,671,927	500	0,25	1	1	500	0,25	1
27	209,671,927	0	0,00	0	1	0	0,00	0
28	209,671,927	0	0,00	0	1	0	0,00	0
29	209,671,927	0	0,00	0	1	0	0,00	0
30	209,671,927	0	0,00	0	1	0	0,00	0

Indikator Bursa

Tabel 12

**VOLUME PERDAGANGAN SAHAM
YANG DILAKUKAN OLEH INVESTOR INDONESIA & ASING**

Periode	Investor Indonesia		Investor Asing		Posisi Akhir	
	Beli (saham)	Jual (saham)	Beli (saham)	Jual (saham)	Ind. beli dari Asing	Asing beli dari Ind.
2006	343.842.885.220	369.303.348.227	93.092.701.888	67.632.238.981	-	12.730.231.453
2007	894.111.606.783	932.281.361.373	145.430.876.272	107.261.121.568	-	38.169.754.704
2008	623.314.972.782	652.408.164.510	164.530.873.641	135.437.681.913	-	29.093.191.728
2009						
Januari	34.387.241.737	32.716.123.215	6.170.695.884	7.841.814.406	1.671.118.522	-
Pebruari	33.111.928.645	32.298.366.051	3.716.850.376	4.530.412.970	813.562.594	-
Maret	33.243.938.313	34.414.469.487	6.837.748.655	5.667.217.481	-	1.170.531.174
April	176.597.960.349	173.375.124.908	11.905.632.439	15.128.467.880	3.222.835.441	-
Mei	268.710.966.850	270.732.743.876	14.039.953.381	12.018.176.355	-	2.021.777.026
Juni	166.073.571.107	165.943.495.311	19.398.789.502	19.528.865.298	130.075.796	-
Juli	124.885.179.311	127.584.204.078	13.520.702.749	10.821.677.982	-	2.699.024.767
Agustus	169.942.168.090	172.536.206.181	15.179.298.014	12.585.259.923	-	2.594.038.091
September	66.113.659.226	73.302.209.143	14.009.694.035	6.821.144.118	-	7.188.549.917
Oktober	87.444.396.430	86.658.014.176	12.855.407.989	13.641.790.243	786.382.254	-
1 - 2	7.145.421.413	6.809.876.399	540.641.807	876.186.821	335.545.014	-
5 - 9	25.261.515.460	25.044.462.845	2.574.373.764	2.791.426.379	217.052.615	-
12 - 16	15.147.078.824	16.033.763.649	3.000.804.349	2.114.119.524	-	886.684.825
19 - 23	16.025.564.652	15.004.673.102	4.346.717.245	5.367.608.795	1.020.891.550	-
26 - 30	23.864.816.081	23.765.238.181	2.392.870.824	2.492.448.724	99.577.900	-
26	3.285.876.447	3.393.020.947	336.733.000	229.588.500	-	107.144.500
27	4.181.300.966	4.098.373.966	340.799.754	423.726.754	82.927.000	-
28	4.830.686.739	4.997.635.339	770.346.900	603.398.300	-	166.948.600
29	6.594.570.647	6.212.417.147	440.909.670	823.063.170	382.153.500	-
30	4.972.381.282	5.063.790.782	504.081.500	412.672.000	-	91.409.500

Persentase rata-rata Volume Perdagangan terhadap Total Perdagangan (Domestik & Asing)

Tabel 13

Periode	Volume transaksi (saham) dan persentase terhadap total perdagangan					
	Total	Indonesia	^ %	Asing	^ %	
2006	436.935.587.228	356.573.116.724	81,61	80.362.470.435	18,39	
2007	1.039.542.483.055	913.196.484.078	87,85	126.345.998.920	12,15	
2008	787.775.856.423	637.861.568.646	80,97	149.984.277.777	19,04	
2009						
Januari	40.557.937.621	33.551.682.476	82,73	7.006.255.145	17,27	
Pebruari	36.828.779.021	32.705.147.348	88,80	4.123.631.673	11,20	
Maret	40.081.676.968	33.829.203.900	84,40	6.252.483.068	15,60	
April	188.503.592.788	174.986.542.629	92,83	13.517.050.160	7,17	
Mei	282.750.920.231	269.721.855.363	95,39	13.029.064.868	4,61	
Juni	185.467.360.609	166.008.533.209	89,51	19.463.827.400	10,49	
Juli	138.405.882.060	126.234.691.695	91,21	12.171.190.366	8,79	
Agustus	185.121.466.104	171.239.187.136	92,50	13.882.278.969	7,50	
September	80.123.353.261	69.707.934.185	87,00	10.415.419.077	13,00	
Oktober	100.299.804.419	87.051.205.303	86,79	13.248.599.116	13,21	
1 - 2	7.686.063.220	6.977.648.906	90,78	708.414.314	9,22	
5 - 9	27.835.889.224	25.152.989.153	90,36	2.682.900.072	9,64	
12 - 16	18.147.883.173	15.590.421.237	85,91	2.557.461.937	14,09	
19 - 23	20.372.281.897	15.515.118.877	76,16	4.857.163.020	23,84	
26 - 30	26.257.686.905	23.815.027.131	90,70	2.442.659.774	9,30	
26	3.622.609.447	3.339.448.697	92,18	283.160.750	7,82	
27	4.522.100.720	4.139.837.466	91,55	382.263.254	8,45	
28	5.601.033.639	4.914.161.039	87,74	686.872.600	12,26	
29	7.035.480.317	6.403.493.897	91,02	631.986.420	8,98	
30	5.476.462.782	5.018.086.032	91,63	458.376.750	8,37	

Sumber : Bursa Efek Indonesia

Riset Pasar Modal - Biro RISTI Bapepam - LK

Indikator Bursa

Tabel 14
**NILAI PERDAGANGAN SAHAM
 YANG DILAKUKAN OLEH INVESTOR INDONESIA & ASING**

Periode	Investor Indonesia		Investor Asing		Posisi Akhir (Rp juta)	
	Beli (Rp juta)	Jual (Rp juta)	Beli (Rp juta)	Jual (Rp juta)	Ind. beli dari Asing	Asing beli dari Ind.
2005	248.986.892,0	233.568.955,9	157.083.694,3	172.501.630,9	15.417.936,1	-
2006	305.173.152,9	322.473.504,0	140.534.970,1	123.234.618,9	-	17.300.351,2
2007	806.350.888,8	838.958.190,3	243.803.412,4	211.196.110,9	-	32.607.301,5
2008	761.483.899,3	779.765.162,9	291.210.305,8	272.929.042,2	-	18.281.263,6
2009						
Januari	22.397.006,6	21.236.764,4	8.994.213,1	10.154.455,2	1.160.242,1	-
Pebruari	18.781.094,3	18.219.549,8	5.882.338,3	6.443.882,9	561.544,6	-
Maret	26.480.532,4	28.295.870,7	10.307.017,0	8.491.678,7	-	1.815.338,3
April	60.914.666,2	63.516.647,1	18.496.835,5	15.894.854,6	-	2.601.981,0
Mei	109.786.109,0	111.759.914,6	21.133.465,2	19.159.659,6	-	1.973.805,6
Juni	27.352.690,7	29.712.630,0	18.332.162,5	15.972.223,1	-	2.359.939,4
Juli	86.692.816,3	89.782.646,3	27.931.179,8	24.841.349,8	-	3.089.830,1
Agustus	95.089.628,4	96.434.319,7	26.768.156,7	25.423.465,4	-	1.344.691,3
September	48.179.987,6	49.104.909,1	18.624.072,6	17.699.151,1	-	924.921,5
Oktober	72.668.215,5	69.550.113,5	26.300.802,5	29.418.904,5	3.118.102,0	-
1 - 2	6.156.691,6	5.586.165,7	1.817.405,8	2.387.931,7	570.525,9	-
5 - 9	22.299.671,7	20.767.248,0	6.911.977,0	8.444.400,8	1.532.423,7	-
12 - 16	12.506.744,5	13.497.108,4	7.098.814,7	6.108.450,8	-	990.363,9
19 - 23	14.461.895,3	12.637.938,7	4.399.386,2	6.223.342,8	1.823.956,6	-
26 - 30	17.243.212,4	17.061.652,7	6.073.218,8	6.254.778,5	181.559,7	-
26	1.756.137,4	1.843.844,2	481.135,1	393.428,3	-	87.706,8
27	2.973.057,3	2.909.962,3	706.895,6	769.990,5	63.094,9	-63.094,9
28	3.540.239,2	3.366.487,5	928.935,4	1.102.687,1	173.751,6	-
29	5.217.920,9	4.687.347,4	1.075.488,3	1.606.061,7	530.573,4	-
30	3.755.857,7	4.254.011,2	2.880.764,4	2.382.610,9	-	498.153,5

Persentase rata-rata Nilai Perdagangan terhadap Total Perdagangan (Domestik & Asing)

Tabel 15

Periode	Nilai transaksi (saham) dan persentase terhadap total perdagangan				
	Total (Rp juta)	Indonesia (Rp juta)	^ %	Asing (Rp juta)	^ %
2006	445.708.122,9	313.823.328,5	70,41	131.884.794,5	29,59
2007	1.050.154.301,2	822.654.539,5	78,34	227.499.761,7	21,66
2008	1.052.692.845,0	770.624.531,1	73,21	282.069.674,0	26,80
2009					
Januari	31.391.219,6	21.816.885,5	69,50	9.574.334,1	30,50
Pebruari	24.663.432,6	18.500.322,0	75,01	6.163.110,6	24,99
Maret	36.787.549,4	27.388.201,6	74,45	9.399.347,8	25,55
April	79.411.501,7	62.215.656,6	78,35	17.195.845,0	21,65
Mei	130.919.574,2	110.773.011,8	84,61	20.146.562,4	15,39
Juni	126.868.325,7	84.976.927,7	66,98	41.891.398,0	33,02
Juli	114.623.996,1	88.237.731,3	76,98	26.386.264,8	23,02
Agustus	121.857.785,1	95.761.974,1	78,59	26.095.811,0	21,41
September	66.804.060,2	48.642.448,3	72,81	18.161.611,8	27,19
Oktober	98.969.018,0	71.109.164,5	71,85	27.859.853,5	28,15
1 - 2	7.974.097,4	5.871.428,6	73,63	2.102.668,7	26,37
5 - 9	29.211.648,8	21.533.459,9	73,72	7.678.188,9	26,28
12 - 16	19.605.559,2	13.001.926,5	66,32	6.603.632,8	33,68
19 - 23	18.861.281,5	13.549.917,0	71,84	5.311.364,5	28,16
26 - 30	23.316.431,1	17.152.432,5	73,56	6.163.998,6	26,44
26	2.237.272,5	1.799.990,8	80,45	437.281,7	19,55
27	3.679.952,8	2.941.509,8	79,93	738.443,0	20,07
28	4.469.174,6	3.453.363,3	77,27	1.015.811,2	22,73
29	6.293.409,1	4.952.634,1	78,70	1.340.775,0	21,30
30	6.636.622,1	4.004.934,4	60,35	2.631.687,7	39,65

Sumber : Bursa Efek Indonesia

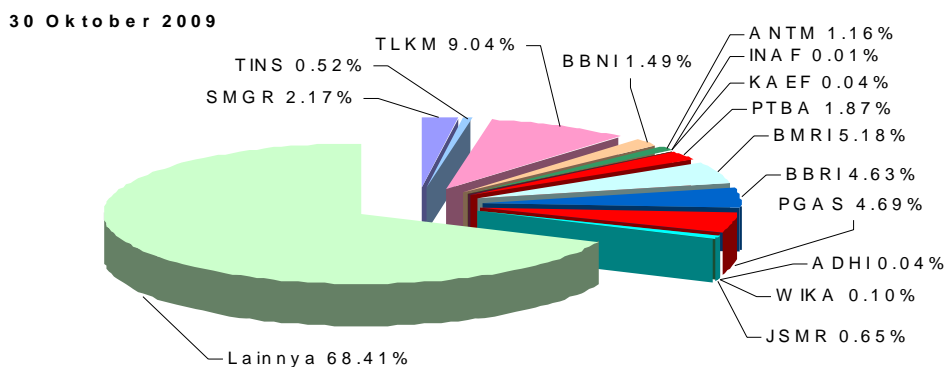
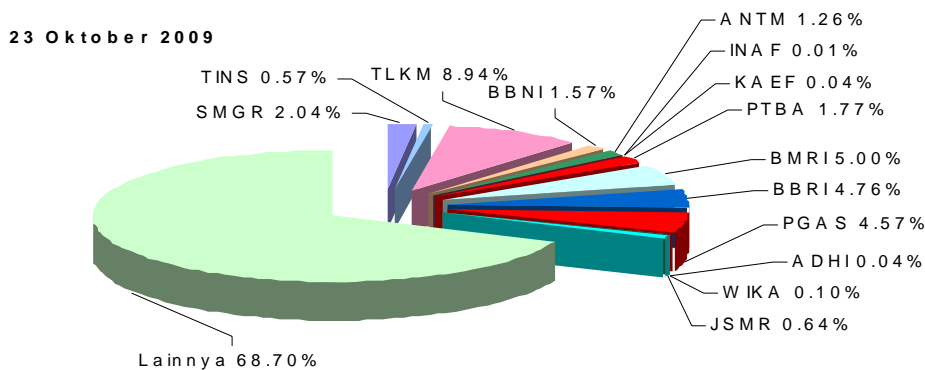
Riset Pasar Modal - Bi o RISTI Bapepam - LK

Saham BUMN

Tabel 16
Nilai Kapitalisasi Saham BUMN
dan Persentase terhadap Kapitalisasi BEI

Emiten	Saham Tercatat	09/10/09 (Rp M)	%	16/10/09 (Rp M)	%	23/10/09 (Rp M)	%	30/10/09 (Rp M)	%	
1	SMGR	5,931,520,000	39,444.61	2.02	41,224.06	2.08	39,741.18	2.04	40,630.91	2.17
2	TINS	5,033,020,000	11,072.64	0.57	11,198.47	0.56	11,072.64	0.57	9,814.39	0.52
3	TLKM	20,159,999,280	172,367.99	8.83	175,391.99	8.83	174,383.99	8.94	169,343.99	9.04
4	BBNI	15,121,201,105	30,620.43	1.57	30,998.46	1.56	30,620.43	1.57	27,974.22	1.49
5	ANTM	9,538,459,750	25,038.46	1.28	25,038.46	1.26	24,561.53	1.26	21,700.00	1.16
6	INAF	3,099,267,500	282.03	0.01	285.13	0.01	282.03	0.01	263.44	0.01
7	KAEF	5,554,000,000	821.99	0.04	810.88	0.04	794.22	0.04	755.34	0.04
8	PTBA	2,304,131,850	32,488.26	1.66	33,870.74	1.71	34,446.77	1.77	35,022.80	1.87
9	BMRI	20,748,854,099	101,150.66	5.18	101,150.66	5.09	97,519.61	5.00	97,000.89	5.18
10	BBRI	12,210,666,450	98,293.05	5.04	97,072.97	4.89	92,799.84	4.76	86,695.73	4.63
11	PGAS	24,241,508,196	86,057.35	4.41	90,905.66	4.58	89,087.54	4.57	87,875.47	4.69
12	ADHI	1,801,320,000	792.58	0.04	792.58	0.04	792.58	0.04	729.53	0.04
13	WIKA	5,846,154,000	2,016.92	0.10	1,987.69	0.10	1,987.69	0.10	1,841.54	0.10
14	JSMR	6,800,000,000	12,308.00	0.63	12,648.00	0.64	12,444.00	0.64	12,172.00	0.65
Jumlah :		612,754.99	31.39	623,375.76	31.39	610,534.08	31.30	591,820.26	31.59	
Nilai Kap.BEJ		1,952,013.89	100.00	1,985,976.63	100.00	1,950,472.14	100.00	1,873,512.48	100.00	
		1,339,258.90	68.61	1,362,600.86	68.61	1,339,938.06	68.70	1,281,692.22	68.41	

Nilai Kapitalisasi Saham BUMN



Sumber : Bursa Efek Indonesia

Riset Pasar Modal - Biro RISTI Bapeam - LK

Saham BUMN

Tabel 17
Kurs Saham BUMN : Oktober 2009

Emiten	Perdana	Periode																	
		2005	2006	2007	2008	2009													
		Jan	Pet	Maret	April	Mei	Juni	Juli	Agt	Sep	Okt	02	09	16	23	30			
1 SMGR	7,000	5,550	6,750	8,650	4,180	3,475	3,500	3,730	3,950	4,675	4,900	5,950	5,950	6,300	6,300	6,650	6,950	6,700	6,850
2 TINS	2,900	1,820	4,430	2,870	1,080	1,090	1,060	1,060	1,160	1,970	2,025	2,100	2,075	2,150	2,175	2,200	2,225	2,200	1,950
3 TLKM	2,050	5,900	10,100	10,150	6,900	6,300	6,300	7,550	7,150	7,450	7,500	8,950	8,400	8,650	8,550	8,550	8,700	8,650	8,400
4 BBNI	850	1,280	1,870	1,970	680	770	700	720	850	1,570	1,720	1,890	1,940	2,125	2,100	2,025	2,050	2,025	1,850
5 ANTM	1,400	3,575	8,000	4,475	1,090	1,110	1,200	1,090	1,200	1,980	2,025	2,200	2,275	2,450	2,500	2,625	2,625	2,575	2,275
6 INAF	250	115	100	205	50	53	50	69	70	83	93	101	91	94	93	91	92	91	85
7 KAEP	200	145	165	305	76	74	76	122	125	148	154	152	148	150	149	148	146	143	136
8 PTBA	675	1,800	3,525	12,000	6,900	7,400	7,200	6,750	7,050	11,250	11,600	13,600	13,000	14,100	14,200	14,100	14,700	14,950	15,200
9 BMRI	575	1,640	2,900	3,500	2,030	1,820	1,740	2,180	2,380	2,975	3,175	4,175	4,100	4,700	4,825	4,875	4,875	4,700	4,675
10 BBRI	875	3,025	5,150	7,400	4,580	4,550	3,725	4,200	4,950	6,250	6,300	7,300	7,600	7,500	7,700	8,050	7,950	7,600	7,100
11 PGAS	1,500	6,900	11,600	15,350	1,860	2,200	1,900	2,150	2,380	2,875	3,150	3,500	3,475	3,650	3,725	3,550	3,750	3,675	3,625
12 ADHI	150	720	800	1,360	270	260	275	275	300	410	425	455	450	460	445	440	440	440	405
13 WIKA	420	-	-	-	220	205	215	220	225	335	335	355	350	350	350	345	340	340	315
14 JSMR	1,700	-	-	-	910	960	920	900	950	1,460	1,550	1,680	1,780	1,870	1,830	1,810	1,860	1,830	1,790

Tabel 18
Volume Perdagangan Saham

Emiten	Periode																		Juta saham				
	2005	2006	2007	2008	2009																		
	jan	peb	maret	april	Mei	Juni	Juli	Agust	Sep	Okt	01-02	05-09	12-16	19-23	26-30								
1 BEI 401,990.0	436,935.6	1,031,341.2	792,887.3	40,557.9	45,757.4	40,081.70	188,503.6	308,629.21	178,351.8	138,405.9	185,121.5	80,123.4	7,686.1	27,835.9	18,147.920	372.3	26,257.7	-	-				
2 ISAT 2,315.1	3,515.7	1,899.6	2,980.0	-	-	-	-	-	-	-	-	-	-	-	-	-	-	-	-				
3 SMGR 29.0	47.5	357.0	909.6	251.6	261.7	216.5	45.5	70.35	75.5	161.7	79.0	79.7	15.7	67.8	38.6	19.0	45.8	-	-				
4 TINS 641.1	814.3	2,736.9	4,658.9	498.4	230.7	270.1	1,403.5	1,915.80	1,581.7	1,154.8	1,028.0	289.6	26.1	185.8	97.0	138.5	113.3	-	-				
5 TLKM 4,942.0	4,787.7	5,616.7	6,157.3	401.0	274.6	321.0	541.0	513.69	382.7	555.7	406.5	270.7	22.0	81.9	102.7	60.4	80.9	-	-				
6 BNI 52.5	217.1	7,518.1	8,390.3	813.3	791.7	482.8	1,152.7	1,238.12	811.8	665.2	943.8	557.8	49.9	129.8	56.1	79.4	164.4	-	-				
7 ANTM1,576.3	1,410.3	13,497.1	16,336.9	576.6	104.9	187.0	2,137.1	2,392.76	1,755.3	1,070.5	2,005.2	995.6	68.4	405.8	153.2	109.6	183.2	-	-				
8 INAF 1,281.1	467.6	2,282.7	39.4	19.4	170.7	179.8	545.2	331.58	1,045.3	277.6	61.4	61.7	12.4	25.9	20.7	20.4	16.5	-	-				
9 KAEP 595.7	430.7	2,381.7	393.2	83.3	102.8	174.8	228.5	96.01	336.9	81.1	37.6	35.7	2.0	5.0	12.2	5.0	6.1	-	-				
10 PTBA 2,176.4	3,554.5	4,819.8	2,730.1	461.2	485.3	541.9	319.9	161.39	132.9	153.7	103.0	113.6	8.3	32.6	25.3	20.6	39.1	-	-				
11 BMRI 9,196.0	16,163.9	16,107.1	9,294.4	377.2	372.0	365.4	686.9	1,368.95	767.5	1,082.0	613.4	451.4	62.6	131.0	66.6	131.9	180.1	-	-				
12 BBRI 4,096.5	3,774.0	3,249.6	4,744.9	576.4	624.4	807.5	479.7	340.66	350.9	414.7	313.6	301.6	25.0	123.5	94.5	126.2	131.8	-	-				
13 PGAS 2,638.7	2,318.1	3,646.0	7,866.8	476.2	229.4	476.0	888.0	1,258.10	1,121.8	825.8	801.8	592.8	58.9	147.3	228.9	154.8	175.8	-	-				
14 ADHI 2,568.9	3,309.0	3,874.7	1,161.2	154.3	287.8	184.3	300.8	356.99	146.4	143.0	256.0	33.2	6.9	8.9	5.9	420.9	24.6	-	-				
15 WIKA -	-	3,244.1	4,548.9	272.4	146.8	526.5	894.0	880.88	488.1	319.2	489.3	128.2	4.3	46.8	21.4	32.7	41.6	-	-				
16 JSMR -	-	1,473.7	2,217.7	2,641.2	3,554.1	3,925.80	471.6	286.05	216.2	164.3	485.1	172.0	17.4	27.8	41.2	46.4	35.2	-	-				
Jumlah	32,109.1	40,810.3	72,704.7	72,429.6	7,602.5	7,637.0	8,659.4	10,094.5	11,211.3	9,212.9	7,069.3	7,623.7	4,083.7	379.8	1,419.9	964.3	1,365.7	1,238.6	-				
Total Volume																							
BEI 401,990.0	436,935.6	1,031,341.2	792,887.3	40,557.9	45,757.4	40,081.70	188,503.6	308,629.21	178,351.8	138,405.9	185,121.5	80,123.4	7,686.1	27,835.9	18,147.920	372.3	26,257.7	-	-				
% dari Total	7.99	9.34	7.05	9.13	18.74	16.69	21.60	5.36	3.63	5.17	5.11	4.12	5.10	4.94	5.10	5.31	6.70	4.72	-				

Saham BUMN

Tabel 19
Nilai Perdagangan Saham

Rp Milliar

Emiten	Periode																	
	2005	2006	2007	2008	2009													
					jan	peb	maret	april	Mei	Juni	Juli	Agust	Sept	Okt 01-02	05-09	12-16	19-23	26-30
1 BEI	406,070.6	445,708.1	1,050,154.3	1,065,309.3	31,391.2	31,193.9	36,787.50	79,411.5	125,866.81	121,896.9	114,624.0	121,857.8	66,804.1	7,974.1	29,211.6	19,605.6	18,861.3	23,316.4
2 ISAT	12,314.5	18,033.9	13,812.7	18,396.9	-	-	-	-	-	-	-	-	-	-	-	-	-	-
3 SMGR	521.4	1,189.9	3,646.7	3,447.0	325.4	305.1	248.2	186.0	287.70	371.8	896.5	465.3	499.5	100.0	449.8	262.0	129.9	304.4
4 TINS	1,347.4	2,382.5	31,871.2	14,955.0	1,396.0	1,129.9	1,585.9	1,824.5	3,221.09	3,456.1	2,261.2	2,284.7	610.4	55.9	411.6	213.8	307.5	229.6
5 TLKM	24,511.9	36,897.1	59,124.3	48,503.6	799.9	678.6	436.9	4,000.8	3,144.30	2,914.8	4,637.3	3,516.9	2,296.5	189.8	701.8	896.1	523.6	676.0
6 BNI	90.0	433.4	14,733.3	9,187.8	742.3	890.4	514.6	1,148.4	1,614.18	1,377.1	1,194.0	1,834.2	1,125.8	104.0	267.7	113.6	158.6	307.2
7 ANTM	3,726.9	7,052.9	64,989.6	42,085.2	706.1	63.8	99.1	2,822.1	3,770.89	3,854.1	2,162.7	5,008.8	2,411.6	169.4	1,061.0	400.9	283.8	425.5
8 INAF	198.5	52.2	451.2	5.3	1.5	21.5	23.8	44.1	24.70	108.9	27.9	6.1	5.8	1.1	2.4	1.9	1.8	1.4
9 KAEF	109.9	67.7	726.3	70.9	544.8	677.0	1,181.5	32.9	13.46	55.6	12.1	5.7	5.3	0.3	0.7	1.8	0.7	0.8
10 PTBA	3,606.7	10,900.7	28,626.3	28,448.4	1,157.5	967.7	1,224.3	2,559.9	1,484.88	1,628.5	1,827.4	1,368.0	1,572.5	117.9	463.6	361.8	304.2	585.0
11 BMRI	14,769.3	32,535.3	50,533.4	24,294.0	1,194.8	1,289.5	1,383.2	1,664.1	3,057.15	2,533.1	3,775.5	2,451.6	1,999.6	296.5	649.9	323.8	619.1	826.3
12 BBRI	11,423.0	15,652.0	19,259.8	24,079.7	1,375.6	1,344.9	1,781.9	2,402.6	1,752.52	2,228.3	2,847.8	2,288.8	2,236.8	192.2	1,017.6	750.1	966.3	950.5
13 PGAS	8,069.8	25,622.0	37,615.3	32,101.5	880.4	222.7	752.7	2,099.8	2,996.06	3,418.4	2,780.1	2,746.8	2,123.1	216.8	538.1	831.9	574.9	643.4
14 ADHI	2,150.7	2,569.4	4,391.5	631.1	37.9	62.5	40.4	97.6	131.04	66.9	64.5	122.0	14.9	3.1	3.9	2.6	200.5	10.2
15 WIKA	-	-	1,879.8	1,375.2	152.9	117.5	442.2	249.1	274.84	170.9	110.4	177.5	44.5	1.5	16.1	7.3	11.2	13.2
16 JSMR	-	-	2,901.4	2,756.9	5,342.7	6,448.8	8,037.90	491.5	405.23	350.9	269.6	868.1	314.5	31.8	50.9	75.4	86.2	63.2
Jumlah	82,840.2	153,388.9	334,562.6	250,338.7	14,657.9	14,219.9	17,752.6	19,623.4	22,178.1	22,535.1	22,867.0	23,144.5	15,260.9	1,480.6	5,635.3	4,243.0	4,168.3	5,036.7
Total Nilai																		
Perd. BEI	406,070.6	445,708.1	1,050,154.3	1,065,309.3	31,391.2	31,193.9	36,787.50	79,411.5	125,866.81	121,896.9	114,624.0	121,857.8	66,804.1	7,974.1	29,211.6	19,605.6	18,861.3	23,316.4
% dari Total	20.40	34.41	31.86	23.50	46.69	45.59	48.26	24.71	17.62	18.49	19.95	18.99	22.84	18.57	19.29	21.64	22.10	21.60

Tabel 20
Frekuensi Perdagangan Saham

Emiten	Periode																	
	2005	2006	2007	2008	2009													
					jan	peb	maret	april	Mei	Juni	Juli	Agust	Sept	Okt 01-02	05-09	12-16	19-23	26-30
BEI	4,011,916	4,805,001	11,861,528	13,440,373	804,995	1,024,280	950,255	2,161,844	2,663,301	2,381,857	2,064,353	2,325,080	1,429,695	179,155	561,106	438,275	403,517	493,309
ISAT	78,017	148,825	73,309	150,928	-	-	-	-	-	-	-	-	-	-	-	-	-	-
SMGR	7,581	14,434	30,965	66,732	13,478	14,075	9,769	5,040	4,787	6,347	10,089	6,022	6,169	966	3,973	3,243	1,693	2,357
TINS	34,701	49,398	273,761	351,597	23,576	13,785	15,897	46,931	62,583	63,075	59,061	46,270	19,223	1,572	8,920	3,294	4,575	5,772
TLKM	124,800	142,334	256,712	295,509	11,829	15,000	9,128	31,308	24,924	16,174	27,512	24,796	18,891	1,484	4,073	5,616	2,802	4,004
BNI	6,030	23,775	110,010	164,960	27,326	30,434	21,233	22,954	25,299	22,339	20,239	27,492	16,139	1,592	4,475	2,648	2,882	6,206
ANTM	56,071	103,979	548,761	746,226	18,811	4,953	7,168	63,395	82,418	68,407	49,683	80,596	49,809	2,425	16,354	8,058	5,758	11,359
INAF	13,127	7,282	38,223	1,248	1,868	6,288	7,431	11,940	5,373	15,733	6,917	1,955	3,316	600	2,059	1,094	409	294
KAEF	10,560	6,487	37,858	12,237	8,974	15,323	25,414	8,464	3,204	9,315	3,873	2,984	1,909	79	420	481	310	404
PTBA	66,519	138,257	227,554	311,931	25,824	22,368	23,176	35,832	19,076	24,462	27,031	15,753	15,957	1,632	4,067	3,959	3,493	6,041
BMRI	147,041	257,162	300,474	272,390	17,669	27,523	23,159	23,882	31,282	26,340	32,570	26,653	21,720	3,091	5,512	5,142	9,745	9,785
BBRI	96,573	111,830	101,926	230,390	28,392	30,686	33,444	29,258	18,863	22,435	27,887	24,404	19,668	2,065	6,419	6,745	10,149	9,817
PGAS	74,349	197,261	275,652	487,225	20,777	9,575	22,577	36,457	38,299	45,412	31,265	41,882	29,519	2,261	5,558	8,811	4,990	6,585
ADHI	62,978	75,419	81,287	50,842	5,349	7,099	4,695	9,636	10,922	5,182	5,818	9,202	1,730	304	367	366	19,362	1,378
WIKA	-	-	51,644	108,329	9,142	6,312	18,569	18,251	16,603	10,508	9,826	10,615	3,656	225	859	537	652	1,111
JSMR	-	-	33,943	100,946	128,356	170,759	178,933	15,978	11,924	10,934	10,563	26,069	11,240	1,064	1,966	2,355	2,913	2,355
Jumlah	778,347	1,276,443	2,442,079	3,351,490	341,371	374,180	400,593	359,326	355,557	346,663	322,334	344,693	218,946	19,360	65,022	52,349	69,733	67,468
Total Frekuensi																		
Perd. BEI	4,011,916	4,805,001	11,861,528	13,440,373	804,995	1,024,280	950,255	2,161,844	2,663,301	2,381,857	2,064,353	2,325,080	1,429,695	179,155	561,106	438,275	403,517	493,309
% dari Total	19.40	26.56	20.59	24.94	42.41	36.53	42.16	16.62	13.35	14.55	15.61	14.82	15.31	10.81	11.59	11.94	17.28	13.68

Manajer Investasi

Tabel 21
**Perkembangan Pengelolaan Dana
oleh Manajer Investasi**

Akhir Periode	Manajer Investasi	^ %	Dana (Rp Milyar)	^ %
2005	83	12,16	48.066,42	- 58,79
2006	90	8,75	78.678,02	63,68
2007	95	5,55	132.280,19	68,12
2008	94	0,00	122.791,66	- 7,17
2009				
Januari	99	5,32	127.112,77	3,39
Pebruari	99	0,00	125.648,40	- 1,15
Maret	99	0,00	131.637,58	4,77
April	99	0,00	143.220,49	8,80
Mei	99	0,00	150.277,24	4,93
Juni	99	0,00	168.238,88	11,95
Juli	99	0,00	171.235,44	1,78
Agustus	99	0,00	168.504,36	-1,72

Tabel 22

Pengelolaan Investasi dan Jumlah Nasabah

Periode	Dalam Negeri				Luar Negeri				Jumlah	
	Lembaga		Perorangan		Lembaga		Perorangan		Nasabah	Dana
	Nasabah	Dana	Nasabah	Dana	Nasabah	Dana	Nasabah	Dana	Nasabah	Dana
2005	491	43.275,30	444	4.390,68	20	396,66	5	3,78	960	48.066,42
2006	600	74.481,14	1.389	2.094,18	28	2.101,35	5	1,36	2.022	78.678,02
2007	826	103.068,61	2.726	26.827,21	34	2.371,07	5	13,29	3.591	132.280,19
2008	9.113	79.091,51	293.573	39.588,94	54	3.961,33	560	149,87	303.300	122.791,66
2009										
Jan	9.626	78.695,26	297.238	44.477,22	54	3.769,08	590	171,21	307.508	127.112,77
Peb	9.974	77.362,89	294.051	44.373,27	51	3.673,22	628	239,02	304.704	125.648,40
Mar	10.363	83.302,86	295.018	43.682,81	50	4.412,95	767	238,96	306.198	131.637,58
Apr	10.798	87.690,54	251.859	50.489,66	52	4.699,23	892	341,05	263.601	143.220,49
Mei	11.182	90.464,58	297.707	53.111,52	49	4.888,68	1.037	1.630,46	309.975	150.277,24
Juni	11.547	105,997	298,336	55,894	53	5,742	1,657	606	311,593	168,238,88
Juli	12,826	99,140	294,852	64,800	56	6,466	1,342	830	309,076	171,235,44
Agustus	12,246	100,453,35	293,482	60,531,64	55	6,716,39	1,506	802,98	307,289	168,504,36

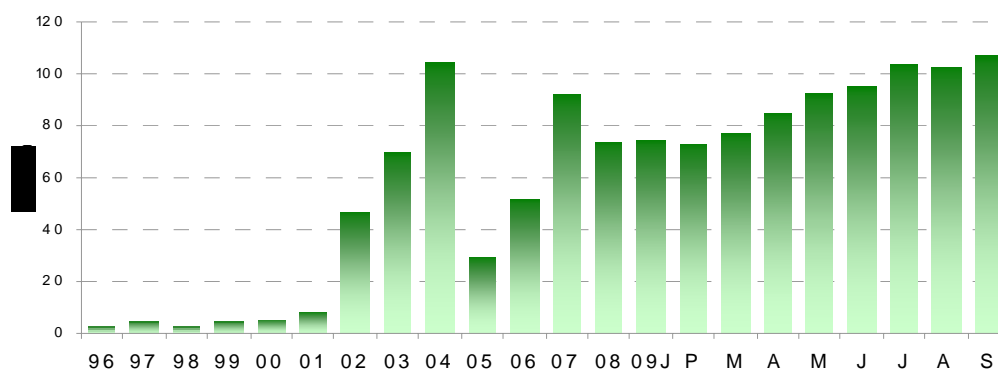
Manajer Investasi

Kinerja Reksa Dana :

Tabel 23

Periode	Jumlah Reksa Dana	Pemegang Saham / U.P	NAB (Rp juta)	Jumlah Saham/Unit yang beredar
2005	328	254.660	29.405.732,20	21.262.143.379,98
2006	403	202.991	51.620.077,40	36.140.102.795,60
2007	473	325.224	92.190.634,60	53.589.967.474,74
2008	567	352.429	74.065.811,15	60.976.090.770,24
2009				
Januari	567	350.000	74.350.333,67	61.064.672.600,71
Pebruari	574	296.432	73.436.359,61	62.289.275.026,17
Maret	577	343.487	77.392.879,93	62.786.979.214,26
April	574	350.290	85.065.673,61	63.481.988.783,52
Mei	574	356.783	92.120.093,25	64.522.799.850,05
Juni	575	357.492	95.420.272,99	65.589.721.368,30
Juli	583	355.636	103.663.287,92	66.198.935.372,04
Agustus	594	350.296	102.439.390,39	65.106.992.129,59

NILAI AKTIVA BERSIH



**Nilai Aktiva Bersih Reksa Dana per Jenis
Rp Miliar**

Periode	saham	p.uang	camp.	pend. tetap	terproteksi	indeks	ETF-Shm	ETF-P. Ttp	Syariah	Total
2005	4.928,44	2.079,99	5.455,60	13.855,26	3.086,44	0,00	0,00	0,00	0,00	29.405,73
2006	8.250,85	3.800,62	8.471,09	19.520,85	11.547,03	29,64	0,00	0,00	0,00	51.620,08
2007	34.799,67	4.828,54	14.232,58	21.285,54	16.345,03	117,04	77,95	504,27	0,00	92.190,63
2008	19.891,42	2.301,84	10.002,12	10.931,32	29.331,30	100,98	43,70	688,93	774,22	74.065,81
2009										
Jan	19.854,86	2.240,43	10.195,78	10.780,89	29.653,14	114,88	42,46	698,12	769,78	74.350,33
Peb	19.073,79	2.259,59	9.723,09	11.225,52	29.525,28	115,40	40,41	652,71	820,56	73.436,36
Mar	20.909,44	2.771,60	10.508,32	11.584,45	29.786,23	133,54	45,22	694,75	959,32	77.392,88
Apr	25.484,17	3.154,75	11.453,90	12.343,67	29.614,70	9,10	54,47	719,29	2.231,61	85.065,67
Mei	29.568,12	3.098,46	12.484,11	13.228,10	29.958,94	10,81	59,46	765,98	2.946,11	92.120,09
Juni	31.284,89	3.438,50	12.710,94	13.688,89	30.332,11	13,77	62,92	757,53	3.130,72	95.420,27
Jul	36.155,08	4.032,03	13.751,28	14.449,35	30.890,72	18,38	73,20	795,50	3.497,75	103.663,29
Agt	35.249,87	4.485,81	13.399,92	15.020,55	29.772,39	19,23	73,44	788,63	3.629,56	102.439,39
Sept	36.854,11	4.734,45	13.865,14	15.587,33	30.868,47	21,16	77,81	814,55	3.872,38	106.695,40

Sumber : E-Monitoring

Manajer Investasi

Tabel 25
Alokasi Dana Reksa Dana
Agustus 2009

Manajer Investasi	Dalam Negeri	Luar Negeri	Jumlah (Rp M)	Manajer Investasi	Dalam Negeri	Luar Negeri	Jumlah (Rp M)
1 AIM Trust	1127.76	0.00	1,127.76	48 Makinta Securities	133.43	0.00	133.43
2 Andalan Artha Adv. Sek.	706.51	0.15	706.66	49 Tiga Pilar Sekuritas	28.81	0.00	28.81
3 Anugra Nusantara A Mgt	9.42	0.00	9.42	50 Mandiri M. Investasi	11348.28	209.72	11,558.00
4 Alberta Investment Mgt	0.00	0.00	0.00	51 Manulife Aset Mjn	7921.51	2.80	7,924.31
5 Asjaya Indosurya Sec.	35.85	0.00	35.85	52 Fortis Investments	16117.46	223.58	16,341.04
6 Antaboga Delta Sekuritas	0.00	0.00	0.00	53 Mega Capital Indonesia	2944.34	0.00	2,944.34
7 Asia Kapitalindo Sec.	0.00	0.00	0.00	54 Millenium Danatama	1257.14	0.00	1,257.14
8 AMCapital Indonesia	0.00	0.00	0.00	55 AXA Asset Mgt.	190.60	0.00	190.60
9 Bahana TCW Inv. Mgt.	8182.60	0.00	8,182.60	56 Momentum Synergy A Mgt.	0.00	0.00	0.00
10 Batavia Prosperindo A Mjn	5927.00	0.00	5,927.00	57 Minna Padi Aset Mjn	56.29	0.00	56.29
11 Bhakti Asset Mgt	396.17	0.00	396.17	58 NATPAC Asset Mgt	0.00	0.00	0.00
12 BNI Securities	3976.13	0.00	3,976.13	59 CIMB Principal A.M.	1820.68	6.28	1,826.95
13 Brahma Capital	0.00	0.00	0.00	60 Nikko Securities	457.61	6.56	464.17
14 Brent Asset Mgt.	256.45	0.00	256.45	61 NISP Sekuritas	2217.75	0.00	2,217.75
15 Batasa Capital	65.10	0.00	65.10	62 Nusadana Aset M	20.90	0.00	20.90
16 Bumiputera Capital	0.00	0.00	0.00	63 Net Assets Mgt.	312.61	0.00	312.61
17 Corfina Capital	12.65	0.00	12.65	64 Optima Investama	0.68	0.00	0.68
18 Credit Suisse Invest. Mgt.	0.00	0.00	0.00	65 Optima Kharya Capital Mgt.	649.31	0.00	649.31
19 Ciptadana Asset Mgt	538.62	0.06	538.69	66 Pacific Capital Investment	0.00	0.00	0.00
20 Danareksa Inv. Mgt.	4494.23	423.56	4,917.78	67 Panca Global Securities	98.39	0.00	98.39
21 Danatama Makmur	4.79	0.00	4.79	68 Panin Sekuritas	1765.28	218.98	1,984.26
22 Dhanawibawa Artha C	1.96	0.00	1.96	69 Paramitra Alfa Sekuritas	40.10	0.00	40.10
23 Dinamika Usahajaya	0.00	0.00	0.00	70 Pavillion Capital	2.37	0.00	2.37
24 Dongsuh Inv. Mgt.	0.00	0.00	0.00	71 Phillip Securities	3.71	10.50	14.21
25 Eficorp Sekuritas	239.84	0.00	239.84	72 PEAK Capital	0.00	0.00	0.00
26 Ekokapital Sekuritas	56.44	25.76	82.20	73 Pratama Capital A. M.	461.77	0.00	461.77
27 Equity Dev. Securities	203.94	0.04	203.98	74 PNM Investment Mgt	447.44	0.00	447.44
28 Evergreen Capital	0.00	0.00	0.00	75 Pratama Capital	0.00	0.00	0.00
29 Eurocapital Peregrine Sec	8.09	0.00	8.09	76 Prospera Asset Mgt.	319.53	0.02	319.55
30 Falcon Asia Resources	1.19	0.00	1.19	77 Prime Capital	0.00	0.00	0.00
31 First State Investments	2385.17	16.21	2,401.38	78 Ramayana Artha Perkasa	0.00	0.00	0.00
32 Gani Aset Mjn	960.66	0.00	960.66	79 Recapital Asset Mgt.	183.21	0.00	183.21
33 CIMB-GK Securities	0.00	0.00	0.00	80 Reliance Asset Mgt.	3.05	0.00	3.05
34 GMT Aset Mjn	266.39	0.00	266.39	81 Samuel Aset Manajemen	363.16	0.00	363.16
35 GoldMany Asset Mjn	9.78	0.00	9.78	82 Sarijaya Permana Sek.	0.00	0.00	0.00
36 Henan Putihrai Asset Mgt	102.34	0.00	102.34	83 Semesta Indovest	33.96	0.00	33.96
37 Indo Premier Securities	131.55	0.00	131.55	84 Sinarmas Sekuritas	1965.76	0.00	1,965.76
38 Insight Investment Mgt.	81.12	0.00	81.12	85 Schroder Inv. Mgt.	19499.35	487.66	19,987.01
39 Intru Nusantara	62.22	0.18	62.40	86 Harvestindo Asset Mgt.	37.16	0.00	37.16
40 Investindo Nusantara Sek.	15.18	0.00	15.18	87 Surya Timur Alam Raya	152.73	0.00	152.73
41 Jakarta Investment	0.00	0.00	0.00	88 Synergy Asset Mgt.	131.17	0.00	131.17
42 Jisawi Finas Fund Mgt. Co.	70.38	0.24	70.62	89 Syailendra Capital	716.01	0.16	716.17
43 JATIM Investment Mgt.	11.24	0.00	11.24	90 TDM Aset Manajemen	0.00	0.00	0.00
44 Signature Capital Indonesia	36.06	0.00	36.06	91 Transpacific Securindo	0.00	0.00	0.00
45 Kresna Graha Sekurindo	967.40	0.00	967.40	92 Treasure Fund Investama	509.84	0.00	509.84
46 Lautandhana Inv. Mgt.	666.77	0.00	666.77	93 Trimegah Securities Tbk	2559.89	0.05	2,559.95
47 Mahanusa Kapital	790.80	110.64	901.44	94 Valbury Asia Securities	531.50	0.00	531.50
				Total :.....	108104.59	1743.14	109,847.73

Manajer Investasi

Tabel 26
**Pengelolaan Investasi Reksa Dana Oleh Manajer Investasi
 Agustus 2009**

No	Nama Perusahaan	Tgl Izin Usaha	Bidang Usaha Kegiatan	Status	Jumlah Nasabah	Dana (RP miliar)
1	PT. ALBERTA INVESTMENT MNGT.	18-09-1997	M	NASIONAL	0	0.00
2	PT. ANDALAN ARTHA ADV. SEK.	23-08-1999	PPE, PEE, MI	NASIONAL	347	706.66
3	PT. ANTABOGA DELTA SEC. IND.	21-03-1992	PPE, MI	NASIONAL	0	0.00
4	PT. ANUGRA NUSANTARA ASSET MNGT	25-08-2003	PPE, MI	PATUNGAN	5	9.42
5	PT. AIMTRUST	10-02-2006	M	PATUNGAN	19	1,127.76
6	PT. AMCAPITAL INDONESIA	26-04-1994	PPE, PEE, MI	PATUNGAN	0	0.00
7	PT. ASIA KAPITALINDO SECURITIES	06-12-1993	PPE, PEE, MI	NASIONAL	0	0.00
8	PT. ASJAYA INDOSURYA SECURITIES	09-09-1991	PPE, PEE, MI	NASIONAL	69	35.85
9	PT. BAHANATCW INVESTMENT MGT.	21-06-1994	M	PATUNGAN	3,867	8,182.60
10	PT. BHAKTI ASSET MANAGEMENT	25-05-2000	M	NASIONAL	522	396.17
11	PT. BATAVIA PROSPERINDO ASET MJN.	14-06-1996	M	NASIONAL	1,240	5,927.00
12	PT. BNI SECURITIES	23-10-1995	PPE, PEE, MI	NASIONAL	1,461	3,976.13
13	PT. BRAHMA CAPITAL	25-07-2002	M	NASIONAL	0	0.00
14	PT. BRENT ASSET MANAGEMENT	17-01-2005	M	NASIONAL	12	256.45
15	PT. BATASA CAPITAL	23-04-2002	M	NASIONAL	264	65.10
16	PT. BUMIPUTERA CAPITAL INDONESIA	19-04-2005	PEE, PPE, MI	NASIONAL	0	0.00
17	PT. CIMB-GK SECURITIES INDONESIA	11-03-2003	PPE, PEE, MI	PATUNGAN	0	0.00
18	PT. CIPTADANA ASSET MANAGEMENT	14-04-1992	M	NASIONAL	929	538.69
19	PT. CORFINA CAPITAL	27-03-2003	M	NASIONAL	11	12.65
20	PT. CREDIT SUISSE INVEST. MNGT. IND.	13-10-2005	M	PATUNGAN	0	0.00
21	PT. DANAREKSA INV. MGT.	09-10-1992	M	NASIONAL	27,161	4,917.78
22	PT. DANATAMA MAKMUR	21-05-1992	PPE, PEE, MI	NASIONAL	1	4.79
23	PT. DANPAC ASSET MANAGEMENT	19-03-2002	M	NASIONAL	0	0.00
24	PT. DHANAWIBAWA ARTHACEMERLANG	12-12-2001	PEE, MI	NASIONAL	4	1.96
25	PT. DINAMIKA USAHAJAYA	05-09-2001	PPE, PEE, MI	NASIONAL	0	0.00
26	PT. DONGSUH INVESTMENT MNGT.	15-05-2000	M	NASIONAL	0	0.00
27	PT. EFICORP SEKURITAS	25-07-1992	PPE, PEE, MI	NASIONAL	1,841	239.84
28	PT. EKOKAPITAL SEKURITAS	08-09-2003	PPE, MI	NASIONAL	14	82.20
29	PT. EVERGREEN CAPITAL	12-04-2002	PPE, PEE, MI	NASIONAL	0	0.00
30	PT. EQUITY SECURITIES INDONESIA	23-09-1994	PEE, PPE, MI	PATUNGAN	366	203.98
31	PT. EUROCAPITAL PEREGRINE SEC.	21-03-1992	PPE, PEE, MI	PATUNGAN	46	8.09
32	PT. FALCON ASIA RESOURCES MANAGEMENT	05-03-2007	M	NASIONAL	3	1.19
33	PT. FIRST STATE INVESTMENTS IND.	24-12-2003	M	PATUNGAN	9,571	2,401.38
34	PT. FORTIS INVESTMENTS	13-07-1992	M	PATUNGAN	61,984	16,341.04
35	PT. GANIASET MANAJEMEN	01-06-1999	M	NASIONAL	13	960.66
36	PT. GMTASET MANAJEMEN	21-06-2002	M	NASIONAL	234	266.39
37	PT. GOLDMANY ASSET MANAJEMEN	07-07-2004	M	PATUNGAN	149	9.78
38	PT. HARVESTINDO ASSET MANAGEMENT	03-02-2004	M	NASIONAL	19	37.16
39	PT. HENAN PUTIHRAI ASSET MNGT.	14-12-2006	M	NASIONAL	22	102.34
40	PT. INDO PREMIER SECURITIES	27-09-2002	PEE, MI	NASIONAL	131	131.55
41	PT. INSIGHT INVESTMENT MNGT.	26-08-2004	M	NASIONAL	79	81.12
42	PT. INTRU NUSANTARA	20-12-1991	M	NASIONAL	522	62.40
43	PT. INVESTINDO NUSANTARA SEKURITAS	19-01-2005	MI, PPE, PEE	NASIONAL	4	15.18
44	PT. JAKARTA INVESTMENT	30-11-2006	M	NASIONAL	0	0.00
45	PT. JATIM INVESTMENT MANAGEMENT	22-10-2004	M	NASIONAL	15	11.24
46	PT. JISAWI FINAS FUND MGT. Co.	12-04-1995	M	NASIONAL	190	70.62
47	PT. KRESNA GRAHA SEKURINDO	28-05-2001	PPE, PEE, MI	NASIONAL	199	967.40
48	PT. SIGNATURE CAPITAL INDONESIA	13-03-2003	PPE, MI	NASIONAL	7	36.06
49	PT. LIPPO SECURITIES Tbk	27-11-1992	M	PATUNGAN	0	0.00
50	PT. LAUTANDHANA INVESTMENT MGT.	06-07-2005	M	NASIONAL	201	666.77
51	PT. MAHANUSA INVESTMENT MGT.	24-09-2001	M	NASIONAL	78	901.44
52	PT. MAKINTA SECURITIES	08-11-2000	PPE, PEE, MI	NASIONAL	1,239	133.43
53	PT. MANDIRI MANAJEMEN INVESTASI	28-12-2004	M	NASIONAL	47,975	11,558.00
54	PT. MANULIFE ASET MANAJEMEN IND.	21-08-1997	M	PATUNGAN	52,614	7,924.31
55	PT. MASINDO ARTHA SECURITIES	28-11-2000	PPE, PEE, MI	NASIONAL	0	0.00
56	PT. MEGACAPITAL INDONESIA	14-04-1992	PPE, PEE, MI	NASIONAL	1,633	2,944.34
57	PT. MILLENIUM DANATAMA INDONESIA	22-12-2003	M	NASIONAL	73	1,257.14
58	PT. MINNAPADIASET MANAJEMEN	20-07-2005	M	NASIONAL	23	56.29

Manajer Investasi

No	Nama Perusahaan	Tgl Izin Usaha	Bidang Usaha Kegiatan	Status	Jumlah Nasabah	Dana (RP miliar)
59	PT. AXAASSET MANAGEMENT INDONESIA	10-07-1992	M	NASIONAL	333	190.60
60	PT. MOMENTUM SYNERGY ASSET MNGT	22-12-2005	M	NASIONAL	0	0.00
61	PT. NATPAC ASSET MANAGEMENT	27-09-2002	M	NASIONAL	0	0.00
62	PT. CIMB PRINCIPAL ASSET MANAGEMENT	07-05-1997	M	NASIONAL	1,016	1,826.95
63	PT. NIKKO SECURITIES INDONESIA	22-02-1993	PPE, PEE, MI	PATUNGAN	1,129	464.17
64	PT. NISP SEKURITAS	20-02-2002	PPE, MI	NASIONAL	7,821	2,217.75
65	PT. NUSADANA ASET MANAJEMEN	21-02-2007	M	NASIONAL	11	20.90
66	PT. NET ASSET MANAGEMENT	26-03-2007	M	NASIONAL	5	312.61
67	PT. OPTIMA INVESTAMA	19-02-2002	M	NASIONAL	1	0.68
68	PT. OPTIMA KHARYA CAPITAL SECURITIES	30-04-1992	PPE, PEE, MI	NASIONAL	0	0.00
69	PT. OPTIMA KHARYA CAPITAL MGT	30-11-2000	M	NASIONAL	9,890	649.31
70	PT. PACIFIC CAPITAL INVESTMENT	27-09-2002	M	NASIONAL	0	0.00
71	PT. PANCA GLOBAL SECURITIES	19-12-2002	PPE, MI	NASIONAL	1	98.39
72	PT. PANIN SEKURITAS	31-01-1997	PPE, PEE, MI	NASIONAL	2,571	1,984.26
73	PT. PARAMITRA ALFA SEKURITAS	25-07-2001	PPE, MI	NASIONAL	83	40.10
74	PT. PAVILLION CAPITAL	25-02-2004	M	NASIONAL	16	2.37
75	PT. PRATAMA CAPITAL ASSETS MANAGEMENT	10-10-2003	M	NASIONAL	255	461.77
76	PT. PEAK CAPITAL	23-08-2005	M	NASIONAL	0	0.00
77	PT. PHILLIP SECURITIES INDONESIA	4-12-1998	PPE, MI	PATUNGAN	7	14.21
78	PT. PRATAMA CAPITAL INDONESIA	06-05-1994	PPE, PEE, MI	NASIONAL	0	0.00
79	PT. PRIME CAPITAL	07-10-2002	M	NASIONAL	0	0.00
80	PT. PNM INVESTMENT MANAGEMENT	27-01-1998	M	NASIONAL	3,839	447.44
81	PT. PROSPERA ASSET MANAGEMENT	19-01-2005	MI	NASIONAL	538	319.55
82	PT. RAMAYANA ARTHA PERKASA	07-07-2004	PPE, MI	NASIONAL	0	0.00
83	PT. RECAPITAL ASSET MANAGEMENT	22-12-2000	M	NASIONAL	5	183.21
84	PT. RELIANCE ASSET MANAGEMENT	19-04-2005	M	PATUNGAN	10	3.05
85	PT. REPUBLIC FUND	29-08-2005	M	NASIONAL	0	0.00
86	PT. SAMUEL ASET MANAJEMEN	21-08-1997	M	NASIONAL	303	363.16
87	PT. SARIJAYA PERMANA SEKURITAS	12-06-2001	PPE, PEE, MI	NASIONAL	0	0.00
88	PT. SEMESTA INDOVEST	23-06-2003	MI, PPE	NASIONAL	17	33.96
89	PT. SCHRODERS INV. MGT. INDONESIA	25-04-1997	M	PATUNGAN	38,651	19,987.01
90	PT. SINARMAS SEKURITAS	15-05-2000	PPE, PEE, MI	NASIONAL	5,337	1,965.76
91	PT. SURYA TIMUR ALAM RAYA	04-10-2004	M	NASIONAL	5	152.73
92	PT. SYAILENDRA CAPITAL	28-11-2006	M	NASIONAL	183	716.17
93	PT. SYNERGY ASSET MANAGEMENT	15-05-2006	M	NASIONAL	20	131.17
94	PT. TDM ASET MANAJEMEN	23-08-2001	M	NASIONAL	0	0.00
95	PT. TIGAPILAR SEKURITAS	18-07-2002	MI, PPE, PEE	NASIONAL	5	28.81
96	PT. TRANSPACIFIC SECURINDO	27-04-1994	PPE, PEE, MI	NASIONAL	0	0.00
97	PT. TREASURE FUND INVESTAMA	30-12-2004	M	NASIONAL	26	509.84
98	PT. TRIMEGAH SECURITIES Tbk	20-04-1994	PPE, PEE, MI	NASIONAL	12,333	2,559.95
99	PT. VALBURY ASIA SECURITIES	11-07-2002	MI, PPE	NASIONAL	90	531.50
JUMLAH					299,658	109,847.73

PPE : Perantara Pedagang Efek

MI : Manajer Investasi

PEE : Penjamin Emisi Efek

Manajer Investasi

Tabel 27
Jumlah Nasabah dan Dana Reksa Dana
Yang Dikelola Manajer Investasi
Agustus 2009

No	Nama Perusahaan	Dalam Negeri				Luar Negeri				Jumlah	
		Lembaga Nasabah	Perorangan Dana	Lembaga Dana	Perorangan Dana	Lembaga Nasabah	Perorangan Dana	Lembaga Dana	Perorangan Dana	Nasabah	Dana
1	PT.AIMTRUST	17	1,122.42	2	5.34	0	0.00	0	0.00	19	1,127.76
2	PT.ANDALANARTHAADV. SEK.	71	675.75	275	30.76	1	0.15	0	0.00	347	706.66
3	PT.ANUGRANUSANTARAASSET MNGT	3	6.70	2	2.72	0	0.00	0	0.00	5	9.42
4	PT.ASJAYAINDOSURYASECURITIES	10	8.73	59	27.12	0	0.00	0	0.00	69	35.85
5	PT.ALBERTAINVESTMENT MANAGEMENT	0	0.00	0	0.00	0	0.00	0	0.00	0	0.00
6	PT.ASIAKAPITALINDO SECURITIES Tbk	0	0.00	0	0.00	0	0.00	0	0.00	0	0.00
7	PT.AMCAPITALINDONESIA	0	0.00	0	0.00	0	0.00	0	0.00	0	0.00
8	PT.ANTABOGA DELTA SEKURITAS IND.									0	0.00
9	PT. BAHANA TCW INV. MANAGEMENT	0	0.00	3,867	182.60	0	0.00	0	0.00	3,867	8,182.60
10	PT. BHAKTI ASSET MANAGEMENT	49	347.92	473	48.25	0	0.00	0	0.00	522	396.17
11	PT. BATAVIA PROSPERINDO ASET MJN	156	5,752.48	1,084	174.52	0	0.00	0	0.00	1,240	5,927.00
12	PT. BNI SECURITIES	74	3,583.13	1,387	393.00	0	0.00	0	0.00	1,461	3,976.13
13	PT. BRENTASSET MANAGEMENT	10	256.37	2	0.08	0	0.00	0	0.00	12	256.45
14	PT. BATASA CAPITAL	25	55.55	239	9.55	0	0.00	0	0.00	264	65.10
15	PT. BRAHMA CAPITAL	0	0.00	0	0.00	0	0.00	0	0.00	0	0.00
16	PT. BUMIPUTERACAPITALINDONESIA	0	0.00	0	0.00	0	0.00	0	0.00	0	0.00
17	PT. CIPTADANAASSET MANAGEMENT	22	503.29	903	35.33	0	0.00	4	0.06	929	538.69
18	PT. CORFINA CAPITAL	4	11.03	7	1.62	0	0.00	0	0.00	11	12.65
19	PT. CREDIT SUISSE INVESTMENT MANAGEMENT INDONESIA	0	0.00	0	0.00	0.00	0	0.00	0	0.00	0.00
20	PT. DANAREKSA INV.MGT	372	2,647.03	26,782	1,847.20	5	423.55	2	0.00	27,161	4,917.78
21	PT. DANATAMA MAKMUR	1	4.79	0	0.00	0	0.00	0	0.00	1	4.79
22	PT. DANPAC ASSET MANAGEMENT	0	0.00	0	0.00	0	0.00	0	0.00	0	0.00
23	PT. DHANAWIBAWAARTHACEMERLANG	0	0.00	4	1.96	0	0.00	0	0.00	4	1.96
24	PT. DINAMIKA USAHA JAYA	0	0.00	0	0.00	0	0.00	0	0.00	0	0.00
25	PT. DONGSUH INVESTMENT MGT	0	0.00	0	0.00	0	0.00	0	0.00	0	0.00
26	PT. EFICORP SEKURITAS	53	153.19	1,788	86.65	0	0.00	0	0.00	1,841	239.84
27	PT. EKOKAPITAL SEKURITAS	2	6.67	11	49.77	1	25.76	0	0.00	14	82.20
28	PT. EQUITY SECURITIES INDONESIA	74	158.72	286	45.22	0	0.00	6	0.04	366	203.98
29	PT. EVERGREEN CAPITAL	0	0.00	0	0.00	0	0.00	0	0.00	0	0.00
30	PT. EUROCAPITAL PEREGRINE SEC.	6	6.54	40	1.55	0	0.00	0	0.00	46	8.09
31	PT. FALCONASIA RESOURCES MANAGEMENT	2	1.15	1	0.04	0	0.00	0	0.00	3	1.19
32	PT. FIRST STATE INVESTMENTS IND.	84	1,050.17	9,419	1,335.00	0	0.00	68	16.21	9,571	2,401.38
33	PT. GANIASET MANAJEMEN	6	958.37	7	2.29	0	0.00	0	0.00	13	960.66
34	PT. CIMB-GK SECURITIES INDONESIA									0	0.00
35	PT. GMT ASET MANAJEMEN	25	121.72	209	144.67	0	0.00	0	0.00	234	266.39
36	PT. GOLDMANY ASSET MANAGEMENT	0	0.00	147	9.78	0	0.00	2	0.00	149	9.78
37	PT. HENAN PUTIHRAI ASSET MANAGEMENT	12	99.93	10	2.41	0	0.00	0	0.00	22	102.34
38	PT. INDO PREMIER SECURITIES	17	109.21	114	22.34	0	0.00	0	0.00	131	131.55
39	PT. INSIGHT INVESTMENTS MNGT.	14	79.57	65	1.55	0	0.00	0	0.00	79	81.12
40	PT. INTRU NUSANTARA	13	58.77	500	3.45	0	0.00	9	0.18	522	62.40
41	PT. INVESTINDO NUSANTARA SEKURITAS	2	15.17	2	0.00	0	0.00	0	0.00	4	15.18
42	PT. JAKARTA INVESTMENT									0	0.00
43	PT. JISAWI FINAS FUND MGT. Co.	56	62.99	133	7.39	0	0.00	1	0.24	190	70.62
44	PT. JATIM INVESTMENT MANAGEMENT	1	10.39	14	0.86	0	0.00	0	0.00	15	11.24
45	PT. SIGNATURE CAPITAL INDONESIA	5	34.76	2	1.30	0.00	0.00	0	0.00	7	36.06
46	PT. KRESNA GRAHA SEKURINDO	53	944.89	146	22.51	0	0.00	0	0.00	199	967.40
47	PT. LAUTANDHANA INV. MGT.	38	661.69	163	5.09	0	0.00	0	0.00	201	666.77
48	PT. LIPPO SECURITIES Tbk.	0	0.00	0	0.00	0	0.00	0	0.00	0	0.00
49	PT. MAHANUSA INVESTMENT MGT.	12	766.08	60	24.72	2	108.52	4	2.12	78	901.44
50	PT. MAKINTA SECURITIES	12	39.38	1,227	94.05	0	0.00	0	0.00	1,239	133.43
51	PT. TIGA PILAR SEKURITAS	4	28.79	1	0.02	0	0.00	0	0.00	5	28.81
52	PT. MANDIRI MANAJEMEN INVESTASI	222	2,422.99	47,636	8,925.29	0	0.00	117	209.72	47,975	11,558.00
53	PT. MANULIFE ASET MANAJEMEN IND.	362	1,290.59	52,232	6,630.91	0	0.00	20	2.80	52,614	7,924.31
54	PT. MASINDOARTHA SECURITIES	0	0.00	0	0.00	0	0.00	0	0.00	0	0.00

Manajer Investasi

No	Nama Perusahaan	Dalam Negeri				Luar Negeri				Jumlah	
		Lembaga		Perorangan		Lembaga		Perorangan			
		Nasabah	Dana	Nasabah	Dana	Nasabah	Dana	Nasabah	Dana	Nasabah	Dana
55	PT.FORTIS INVESTMENTS	301	5,283.22	61,110	10,834.24	1	47.23	572	176.34	61,984	16,341.04
56	PT.MEGACAPITAL INDONESIA	337	2,820.99	1,296	123.35	0	0.00	0	0.00	1,633	2,944.34
57	PT.MILLENIU DANATAMA IND.	11	1,214.43	62	42.72	0	0.00	0	0.00	73	1,257.14
58	PT.MINNA PADI ASET MANAJEMEN	3	37.60	20	18.70	0	0.00	0	0.00	23	56.29
59	PT.AXAASSET MANAGEMENT INDONESIA	0	0.00	333	190.60	0	0.00	0	0.00	333	190.60
60	PT.MOMENTUM SYNERGY ASSET MNGT.	0	0.00	0	0.00	0	0.00	0	0.00	0	0.00
61	PT.NATPAC ASSET MANAGEMENT	0	0.00	0	0.00	0	0.00	0	0.00	0	0.00
62	PT.NET ASSETS MANAGEMENT	3	312.60	2	0.01	0	0.00	0	0.00	5	312.61
63	PT.CIMB PRINCIPAL ASSET MANAGEMENT	116	1,784.52	897	36.16	3	6.28	0	0.00	1,016	1,826.95
64	PT.NIKKO SECURITIES INDONESIA	22	113.14	1,104	344.46	0	0.00	3	6.56	1,129	464.17
65	PT.NISP SEKURITAS	74	1,181.61	7,747	1,036.14	0	0.00	0	0.00	7,821	2,217.75
66	PT.NUSADANA ASET MANAJEMEN	9	19.85	2	1.05	0	0.00	0	0.00	11	20.90
67	PT.OPTIMA INVESTAMA	1	0.68	0	0.00	0	0.00	0	0.00	1	0.68
68	PT.OPTIMA KHARYA CAP. MGT.	7,348	625.81	2,542	23.50	0	0.00	0	0.00	9,890	649.31
69	PT.OPTIMA KHARYA CAPITAL SEC.	0	0.00	0	0.00	0	0.00	0	0.00	0	0.00
70	PT.PACIFIC CAPITAL INVESTMENT	0	0.00	0	0.00	0	0.00	0	0.00	0	0.00
71	PT.PANCA GLOBAL SECURITIES	1	98.39	0	0.00	0	0.00	0	0.00	1	98.39
72	PT.PANIN SEKURITAS	157	890.73	2,407	874.55	1	213.30	6	5.68	2,571	1,984.26
73	PT.PARAMITRA ALFA SEKURITAS	22	38.08	61	2.02	0	0.00	0	0.00	83	40.10
74	PT.PAVILLION CAPITAL	1	0.96	15	1.41	0	0.00	0	0.00	16	2.37
75	PT.PEAK CAPITAL	0	0.00	0	0.00	0	0.00	0	0.00	0	0.00
76	PT.PHILLIP SECURITIES INDONESIA	1	2.42	5	1.29	0	0.00	1	10.50	7	14.21
77	PT.PRATAMA CAPITAL ASSETS MANAGEMENT	56	307.62	199	154.15	0	0.00	0	0.00	255	461.77
78	PT.PNM INVESTMENT MGT	81	296.16	3,758	151.29	0	0.00	0	0.00	3,839	447.44
79	PT.PRATAMA CAPITAL INDONESIA									0	0.00
80	PT.PROSPERA ASSET MANAGEMENT	74	182.55	463	136.98	0	0.00	1	0.02	538	319.55
81	PT.PRIME CAPITAL	0	0.00	0	0.00	0	0.00	0	0.00	0	0.00
82	PT.RAMAYANA ARTHA PERKASA	0	0.00	0	0.00	0	0.00	0	0.00	0	0.00
83	PT.RECAPITAL ASSET MANAGEMENT	5	183.21	0	0.00	0	0.00	0	0.00	5	183.21
84	PT.RELIANCE ASSET MANAGEMENT	3	3.00	7	0.05	0	0.00	0	0.00	10	3.05
85	PT.REPUBLIC FUND	0	0.00	0	0.00	0	0.00	0	0.00	0	0.00
86	PT.SAMUEL ASET MANAJEMEN	8	348.05	295	15.11	0	0.00	0	0.00	303	363.16
87	PT.SARIJAYA PERMANA SEKURITAS									0	0.00
88	PT.SCHRODER INV. MGT. INDONESIA	358	13,431.49	37,638	6,067.87	1	171.11	654	316.55	38,651	19,987.01
89	PT.SEMESTA INDOVEST	1	2.97	16	30.99	0	0.00	0	0.00	17	33.96
90	PT.SINARMAS SEKURITAS	175	1,136.72	5,162	829.04	0	0.00	0	0.00	5,337	1,965.76
91	PT.HARVEST INDO ASSET MNGT.	17	37.02	2	0.14	0	0.00	0	0.00	19	37.16
92	PT.SURYA TIMUR ALAM RAYA	3	150.29	2	2.43	0	0.00	0	0.00	5	152.73
93	PT.SYNERGY ASSET MANAGEMENT	10	130.55	10	0.62	0	0.00	0	0.00	20	131.17
94	PT.SYAILENDRA CAPITAL	31	684.06	151	31.94	0	0.00	1	0.16	183	716.17
95	PT.TDMASET MANAJEMEN	0	0.00	0	0.00	0	0.00	0	0.00	0	0.00
96	PT.TRANS PACIFIC SECUR INDO	0	0.00	0	0.00	0	0.00	0	0.00	0	0.00
97	PT.TREASURE FUND INVESTAMA	8	509.75	18	0.09	0	0.00	0	0.00	26	509.84
98	PT.TRIMEGAH SECURITIES Tbk	761	1,244.33	11,571	1,315.56	0	0.00	1	0.05	12,333	2,559.95
99	PT.VALBURY ASIA SECURITIES	7	530.21	83	1.29	0	0.00	0	0.00	90	531.50
		11,894	57,659.93	286,277	50,444.65	15.00	995,911,472.00	747.24	299,658	109,847.73	

Manajer Investasi

Tabel 28
Perkembangan Jumlah Dana Kelolaan Reksa Dana
Yang Dikelola Manajer Investasi
Februari - Juni 2009

		Rp Miliar				
NO.	NAMA PERUSAHAAN	Feb	Mar	Apr	Mei	Juni
1	PT. ANDALAN ARTHAADV. SEK.	375.99	390.23	406.18	417.90	745.00
2	PT. ANUGRA NUSANTARAASSET MNGT	8.23	8.40	8.69	9.49	8.42
3	PT. ANTABOGA DELTA SEC. IND.	0.00	0.00	0.00	0.00	0.00
4	PT. ASJAYA INDOSURYA SEC.	18.38	17.14	17.41	15.53	23.41
5	PT. AIM TRUST	1,079.06	1,084.28	1,141.02	996.34	1,171.82
6	PT. ALBERTA INVESTMENT MNGT.	0.00	0.00	0.00	0.00	0.00
7	PT. AMCAPITAL INDONESIA	0.00	0.00	0.00	0.00	0.00
8	PT. ASIA KAPITALINDO SECURITIES	0.00	0.00	0.00	0.00	0.00
9	PT. BAHANA TCW INV. MGT.	6,190.93	6,524.26	6,841.86	7,416.29	7,803.55
10	PT. BHAKTIASSET MANAGEMENT	408.65	411.98	413.97	394.39	378.65
11	PT. BATAVIA PROSPERINDOASET MJN	5,748.44	5,788.14	6,033.32	5,425.66	5,606.37
12	PT. BNI SECURIITIES	2,124.91	2,156.73	2,187.09	2,294.25	3,163.63
13	PT. BRAHMA CAPITAL	0.00	0.00	0.00	0.00	0.00
14	PT. BRENTASSET MANAGEMENT	128.94	234.85	246.33	255.31	261.69
15	PT. BATASA CAPITAL	84.10	83.88	85.30	87.27	70.11
16	PT. BUMIPUTERA CAPITAL INDONESIA	0.00	0.00	0.00	0.00	0.00
17	PT. VALBURY ASIA SECURITIES	512.15	513.35	517.90	522.83	519.41
18	PT. CIPTADANAASSET MANAGEMENT	487.27	497.08	514.41	529.79	560.39
19	PT. CORFINA CAPITAL	4.11	4.33	5.50	6.66	9.69
20	PT. CREDIT SUISSE INVEST. MNGT. IND.	0.00	0.00	0.00	0.00	0.00
21	PT. DANAREKSA INV. MGT.	5,225.41	3,565.95	5,697.93	5,746.69	4,802.88
22	PT. DANATAMAMAKMUR	4.73	4.74	4.76	4.76	4.78
23	PT. DHANAWIBAWAARTHACEMERLANG	7.70	7.74	7.70	2.76	1.90
24	PT. DANPACASSET MANAGEMENT	0.00	0.00	0.00	0.00	0.00
25	PT. DINAMIKA USAHAJAYA	0.00	0.00	0.00	0.00	0.00
26	PT. DONGSUH INVESTMENT MGT.	0.00	0.00	0.00	0.00	0.00
27	PT. EFICORP SEKURITAS	239.84	239.84	239.84	239.84	239.84
28	PT. EKOKAPITAL SEKURITAS	109.79	135.35	80.50	81.07	81.49
29	PT. EVERGREEN CAPITAL	0.00	0.00	0.00	0.00	0.00
30	PT. EQUITY DEVELOPMENT SEC.	87.97	90.02	122.13	142.12	198.73
31	PT. EUROCAPITAL PEREGRINE SEC.	5.80	6.06	7.12	7.52	7.89
32	PT. FALCONASIA RESOURCES MANAGEMENT	1.02	1.06	1.15	1.19	1.18
33	PT. FIRST STATE INVESTMENTS IND.	1,426.34	1,601.09	1,901.18	2,096.33	2,340.76
34	PT. GANIASET MANAJEMEN	7.97	8.63	10.34	11.21	956.22
35	PT. CIMB-GK SECURITIES INDONESIA	0.00	0.00	0.00	0.00	0.00
36	PT. GMTASET MANAJEMEN	192.35	197.97	204.87	222.49	256.80
37	PT. GOLDMANY ASSET MANAGEMENT	8.03	6.47	5.88	9.33	9.90
38	PT. HENAN PUTIHRAIASSET MNGT.	99.36	99.74	100.58	101.76	100.25
39	PT. INDO PREMIER SECURITIES	158.46	165.60	114.59	169.15	131.81
40	PT. INSIGHT INVESTMENTS MNGT.	72.45	76.21	77.05	74.75	81.56
41	PT. INTRU NUSANTARA	55.48	56.86	58.94	59.98	61.59
42	PT. INVESTINDO NUSANTARA SEKURITAS	25.60	25.33	25.36	25.49	15.18
43	PT. JISAWI FINAS FUND MGT. Co.	64.22	62.90	66.30	67.22	70.51
44	PT. JATIM INVESTMENT MANAGEMENT	7.14	7.58	9.03	10.10	11.16
45	PT. JAKARTA INVESTMENT	2.97	2.61	3.09	3.21	3.41
46	PT. SIGNATURE CAPITAL INDONESIA	33.49	34.34	34.79	35.36	35.93
47	PT. KRESNA GRAHA SEKURINDO	652.99	678.30	727.71	747.53	954.78
48	PT. LAUTANHANA INV. MGT.	650.40	582.22	600.79	636.63	629.82
49	PT. LIPPO SECURITIES TBK	0.00	0.00	0.00	0.00	0.00
50	PT. MAHANUSA INVESTMENT MNGT	892.23	900.29	909.60	806.71	765.11
51	PT. MAKINTASECURITIES	70.46	48.88	98.90	118.91	138.03
52	PT. TIGA PILAR SEKURITAS	24.68	26.31	27.26	28.02	29.07
53	PT. MANDIRI MANDIRI MANAJEMEN INV.	7,712.76	8,193.69	8,530.37	9,993.78	11,615.75
54	PT. MANULIFE ASET MANAJEMEN IND.	4,788.44	5,439.39	6,127.19	6,433.96	7,796.76
55	PT. MASINDO ARTHA SECURITIES	0.00	0.00	0.00	0.00	0.00
56	PT. FORTIS INVESTMENTS	10,186.45	10,913.14	12,917.21	14,302.11	16,749.92

Manajer Investasi

		Rp Miliar				
NO.	NAMA PERUSAHAAN	Feb	Mar	Apr	Mei	Jun
57	PT. MEGACAPITAL INDONESIA	843.77	964.70	1,727.81	2,032.72	2,807.24
58	PT. MINNAPADIASET MANAJEMEN	28.08	28.19	31.96	36.95	47.86
59	PT. MILLENIUM DANATAMA IND.	6.51	412.42	412.72	403.93	1,156.85
60	PT. AXA ASSET MANAGEMENT IND.	138.75	144.77	1,822.91	170.25	191.52
61	PT. MOMENTUM SYNERGY ASSET MNGT.	0.00	0.00	0.00	0.00	0.00
62	PT. NATPAC ASSET MANAGEMENT	0.00	0.00	0.00	0.00	0.00
63	PT. CIMB PRINCIPAL ASSET MANAGEMENT	1,463.17	1,509.08	1,566.02	1,600.32	1,727.38
64	PT. NIKKO SECURITIES INDONESIA	966.76	885.76	822.85	848.82	486.57
65	PT. NISP SEKURITAS	1,700.48	1,697.91	2,000.24	1,459.03	1,947.51
66	PT. NUSADANA ASSET MANAJEMEN	16.72	17.56	18.50	19.00	20.89
67	PT. NET ASSET MANAGEMENT	316.31	326.69	86.65	335.49	309.85
68	PT. OPTIMA INVESTAMA	0.49	0.51	0.65	0.74	0.69
69	PT. OPTIMA KHARYA CAPITAL MGT.	1,727.43	1,615.77	1,425.16	1,121.21	896.98
70	PT. OPTIMA KHARYA CAPITAL SEC.	0.00	0.00	0.00	0.00	0.00
71	PT. PACIFIC CAPITAL INVESTMENT	0.00	0.00	0.00	0.00	0.00
72	PT. PANCA GLOBAL SECURITIES	71.92	74.72	76.78	91.78	94.50
73	PT. PANIN SEKURITAS	968.25	1,066.80	1,253.60	1,550.10	1,751.97
74	PT. PARAMITRA ALFA SEKURITAS	30.88	32.08	42.40	46.63	42.12
75	PT. PAVILLION CAPITAL	2.33	2.35	2.34	2.35	2.37
76	PT. PEAK CAPITAL	0.00	0.00	0.00	0.00	0.00
77	PT. PHILLIP SECURITIES INDONESIA	26.93	27.38	12.69	13.22	14.16
78	PT. PRATAMA CAPITAL ASSETS MNGT.	185.28	203.75	285.60	424.15	461.02
79	PT. PNM INVESTMENT MANAGEMENT	457.99	414.00	411.29	431.84	465.07
80	PT. PRATAMA CAPITAL INDONESIA	0.00	0.00	0.00	0.00	0.00
81	PT. PROSPERA ASSET MANAGEMENT	197.39	206.50	250.91	279.88	317.66
82	PT. PRIME CAPITAL	0.00	0.00	0.00	0.00	0.00
83	PT. RAMAYANA ARTHA PERKASA	0.00	0.00	0.00	0.00	0.00
84	PT. RECAPITAL ASSET MGT.	292.81	292.79	303.97	206.56	184.18
85	PT. RELIANCE ASSET MGT.	1.38	1.49	2.02	2.47	2.95
86	PT. REPUBLIC FUND	0.00	0.00	0.00	0.00	0.00
87	PT. SAMUEL ASSET MANAJEMEN	344.12	359.83	368.01	379.02	371.96
88	PT. SARIJAYA PERMAN SEKURITAS	0.00	0.00	0.00	0.00	0.00
89	PT. SCHRODER INV. MGT. IND.	13,490.80	14,371.54	16,300.78	17,655.53	21,036.72
90	PT. SEMESTA INDOVEST	17.99	18.73	22.79	27.02	32.75
91	PT. SINARMAS SEKURITAS	1,464.41	1,484.76	1,041.66	1,941.67	2,120.08
92	PT. HARVEST INDO ASSET MNGT.	169.32	124.49	82.18	59.58	38.51
93	PT. SURYA TIMUR ALAM RAYA	43.82	118.94	185.28	244.78	255.76
94	PT. SYNERGY ASSET MANAGEMENT	134.30	131.59	444.35	127.65	130.11
95	PT. SYAILENDRA CAPITAL	173.78	255.36	506.43	605.81	738.88
96	PT. TDM ASSET MANAJEMEN	0.00	0.00	0.00	0.00	0.00
97	PT. TRANSPACIFIC SECURINDO	0.00	0.00	0.00	0.00	0.00
98	PT. TREASURE FUND INVESTAMA	465.76	580.12	597.83	0.00	940.55
99	PT. TRIMEGAH SECURINDO LESTARI	1,459.64	1,570.20	1,922.47	3,150.59	2,492.84
	JUMLAH	77,193.27	79,833.75	91,159.97	95,820.75	109,502.65

Komposisi Kepemilikan Efek

Tabel 29
**KOMPOSISI KEPEMILIKAN EFEK ASING/LOKAL
 YANG TERCATAT DI KSEI
 s.d. 23 Oktober 2009**

Status Pemegang Efek	Rp Milliar											
	Asing :						Lokal :					
	Equity		Corporate Bond		Government Bond		Equity		Corporate Bond		Government Bond	
	Nilai	(%)	Nilai	(%)	Nilai	(%)	Nilai	(%)	Nilai	(%)	Nilai	(%)
Corporate	69,524.21	6.08	108.54	0.14	0.00	0	167,265.94	14.64	4,075.12	5.39	327.11	2.07
Individual	1,770.05	0.15	17.36	0.02	1.97	0.01	84,417.67	7.39	682.78	0.90	12,154.63	76.79
Mutual Fund	35,945.88	3.15	0.00	0	0.00	0	46,279.21	4.05	12,047.44	15.93	1,011.64	6.39
Securities Company	33,604.72	2.94	24.43	0	0.00	0	13,642.25	1.19	598.17	0.79	176.98	1.12
Insurance	356.37	0.03	0.00	0	0.00	0	35,740.83	3.13	17,003.92	22.48	205.30	1.30
Pension Fund	4,062.78	0.36	0.00	0	0.00	0	15,577.17	1.36	21,715.27	28.71	564.59	3.57
Financial Institution	299,047.85	26.17	825.09	1.09	150.00	0.95	6,604.00	0.58	15,004.95	19.84	855.26	5.40
Fondation	0.00	0	0.00	0	0.00	0	1,345.42	0.12	1,877.96	2.48	79.45	0.50
Others	326,998.35	28.61	1,645.15	2.18	242.15	1.53	733.84	0.06	4.75	0.01	58.93	0.37
Total Kepemilikan Efek	771,310.21	67.49	2,620.57	3.46	394.12	2.49	371,606.34	32.51	73,010.35	96.54	15,433.87	97.51

**Grafik Komposisi Efek Asing/Lokal
 s.d. 23 Oktober 2009**

